

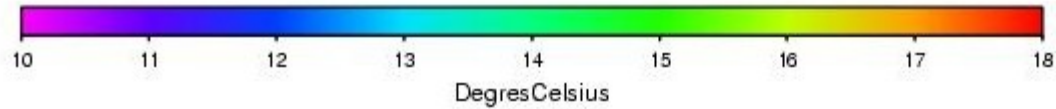


Résultats

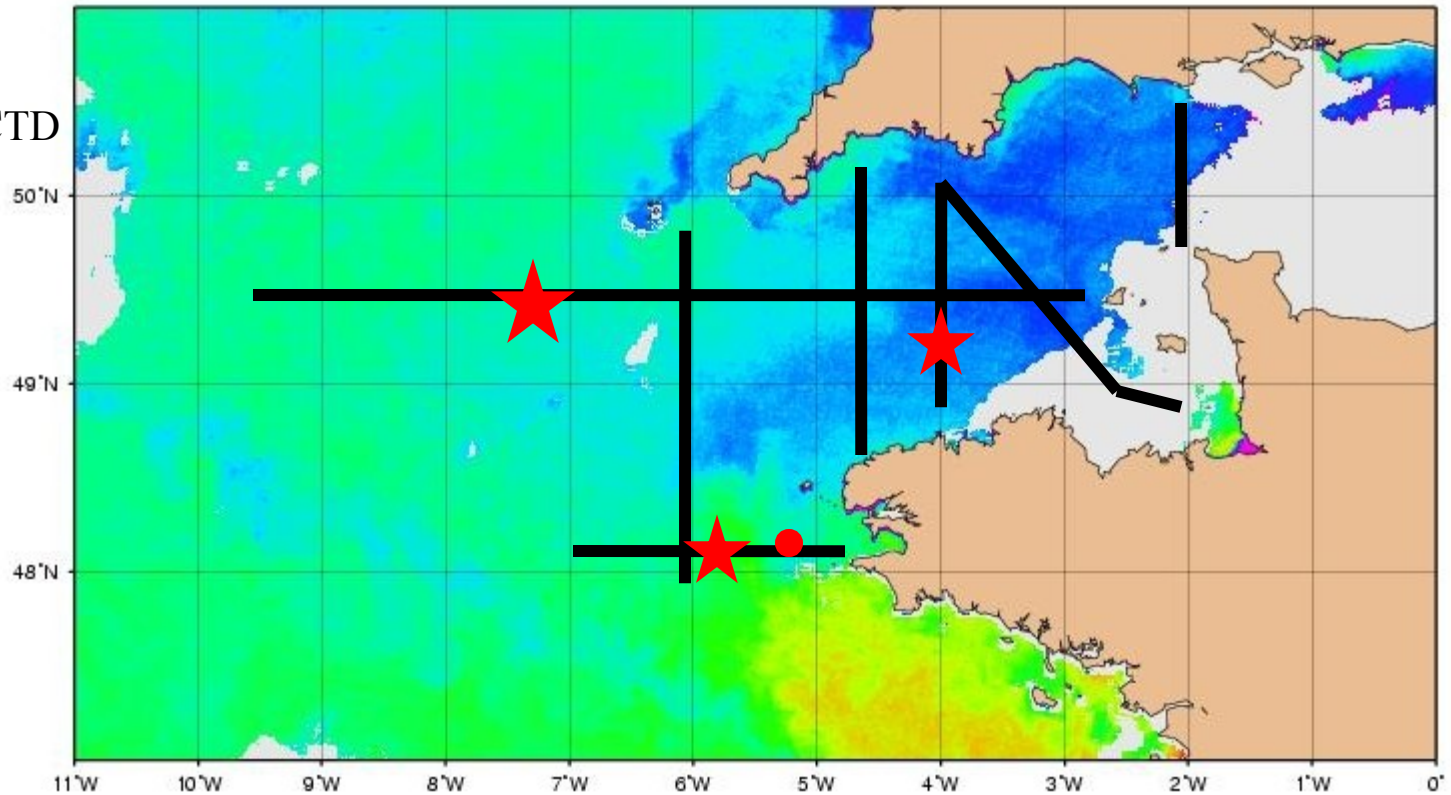
CAM/MOUTON 2007-LEG1

SST station CMO du 04-05-2007 02h24 TU

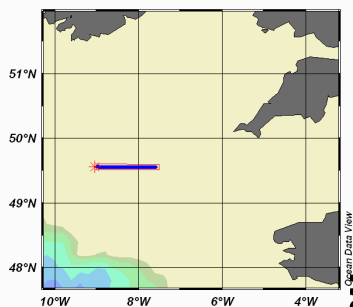
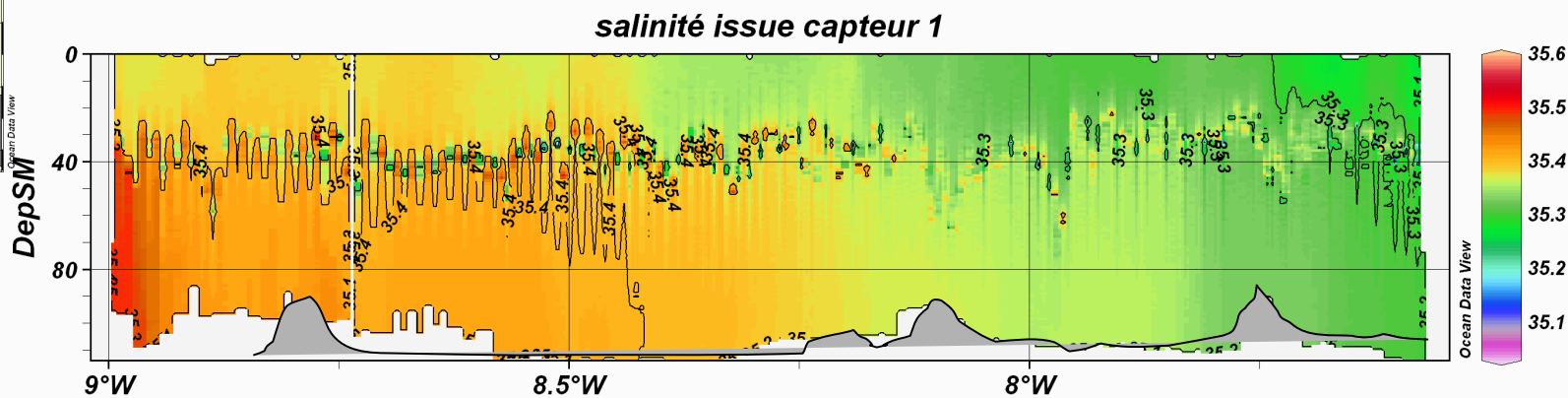
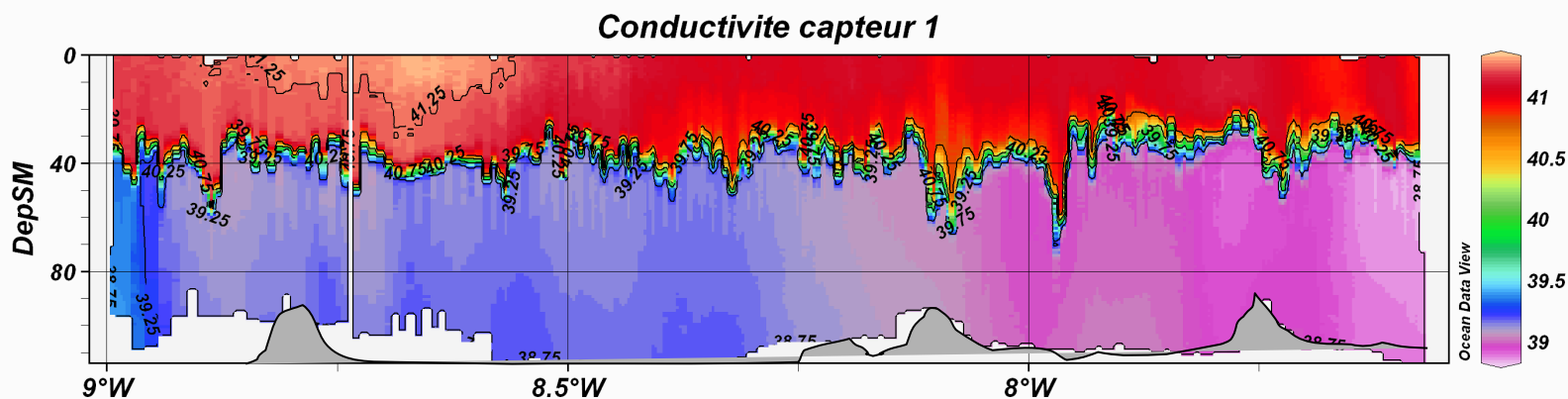
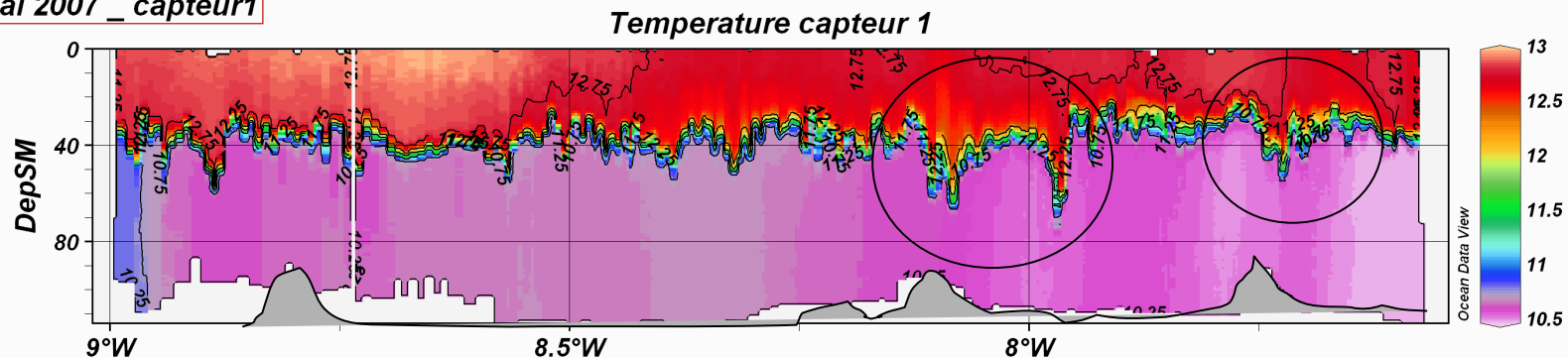
Objectifs MOUTON2007-1 : *Echelle 1:5093000*



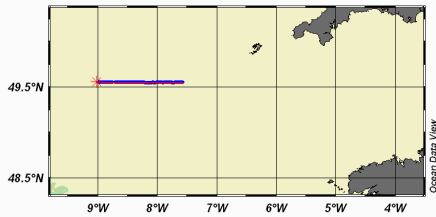
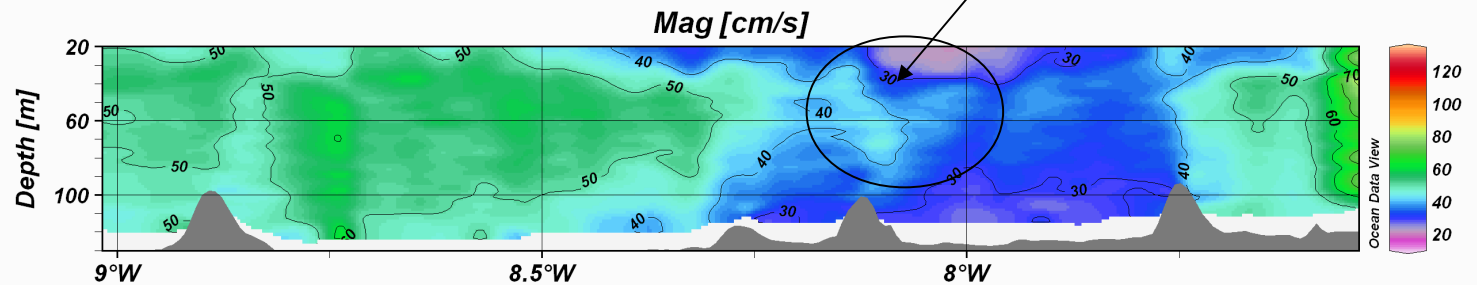
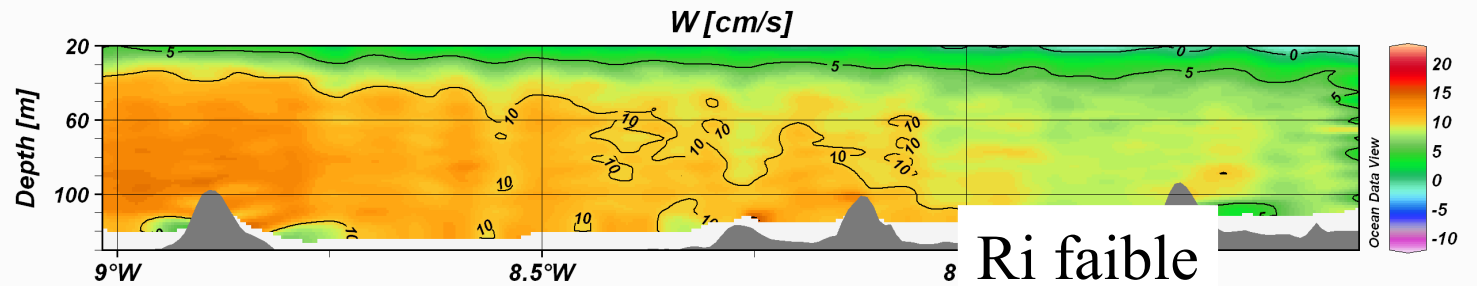
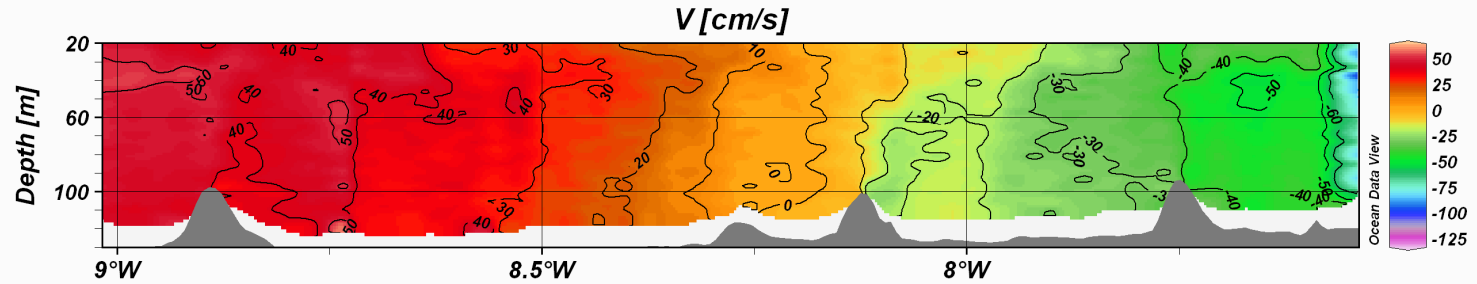
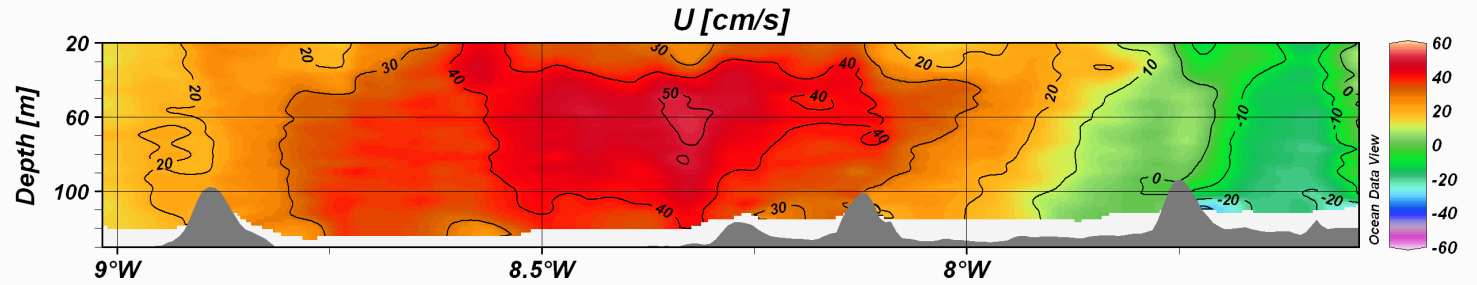
- Radiale seasonar/CTD
- ~~—~~ Réseau seasonar
- ★ Points fixes
- Mouillage adcp



Ressauts hydrauliques

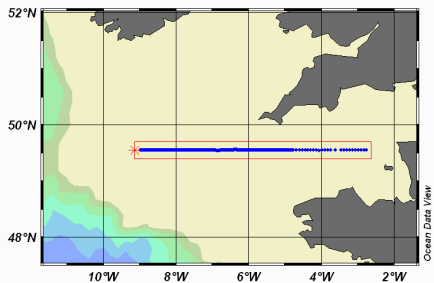
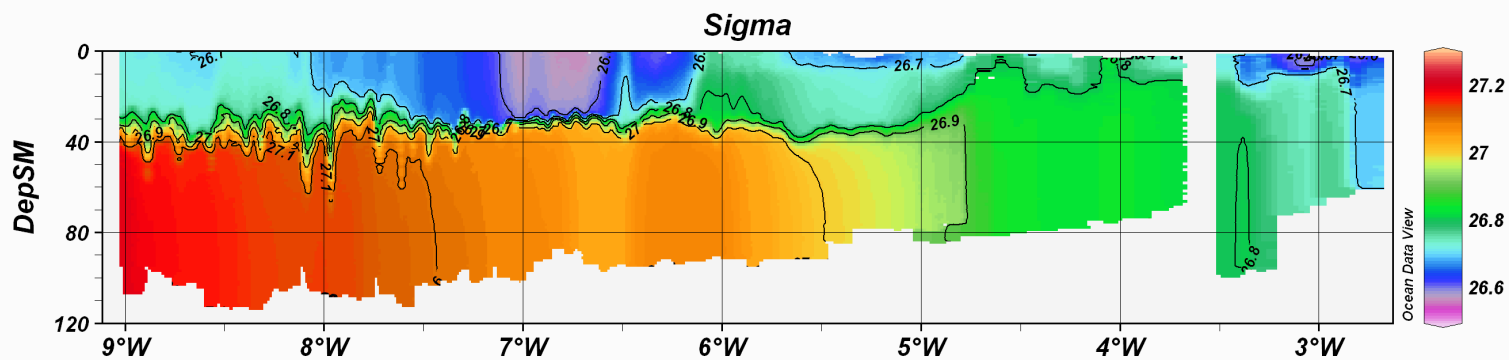
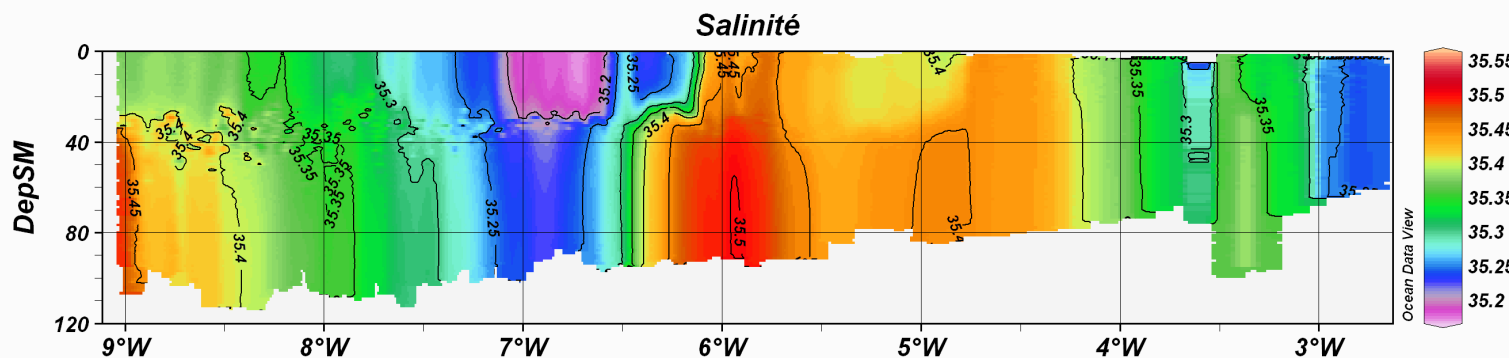
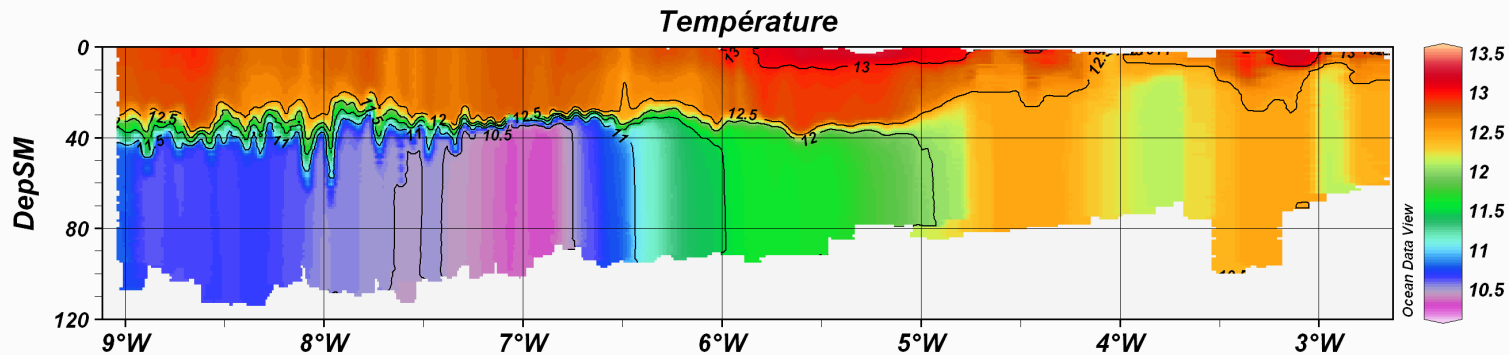


Ressauts hydrauliques



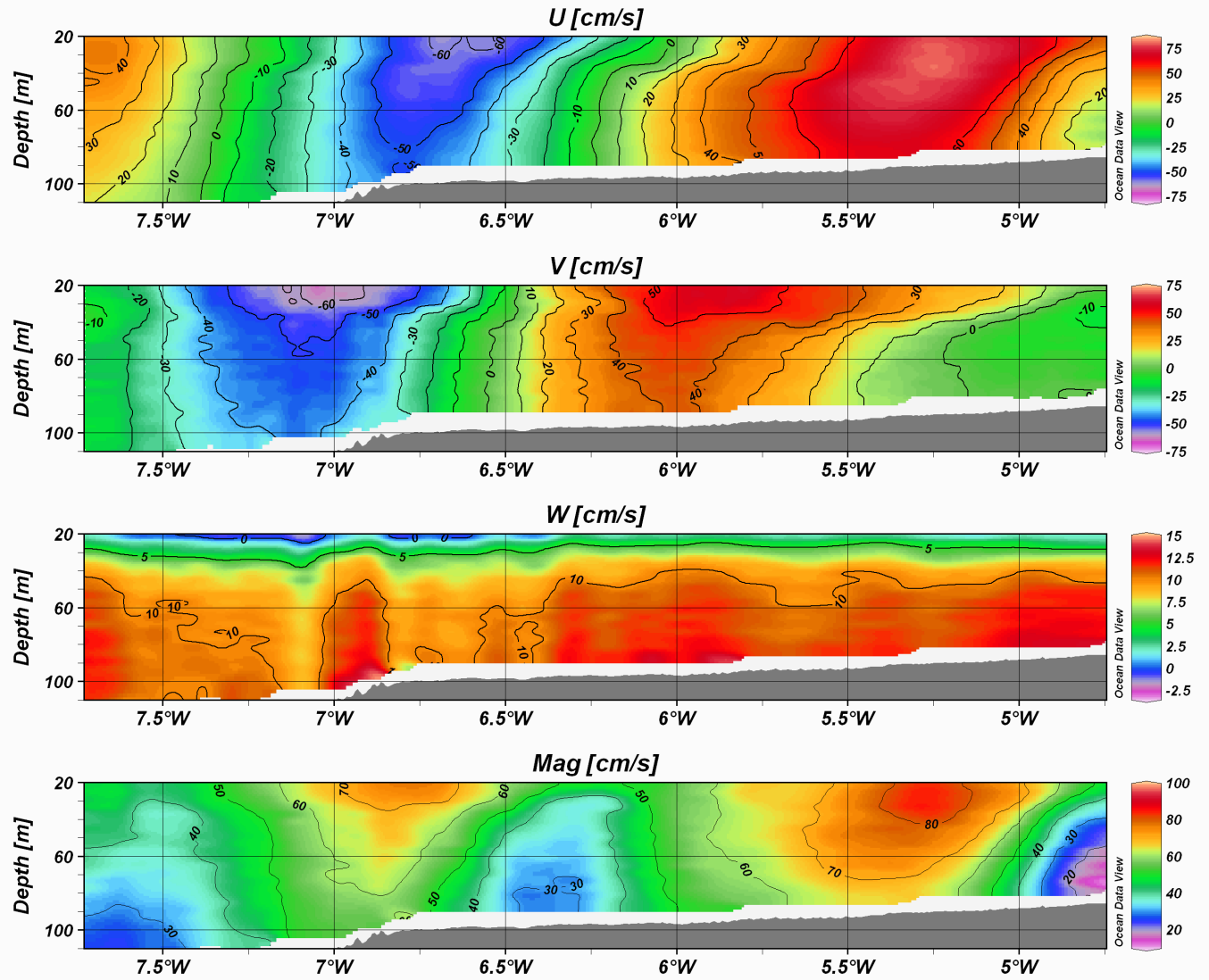
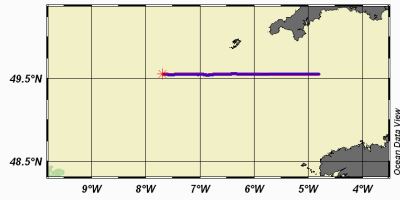
Radiale_WE_season_CTD

Radiale E-W



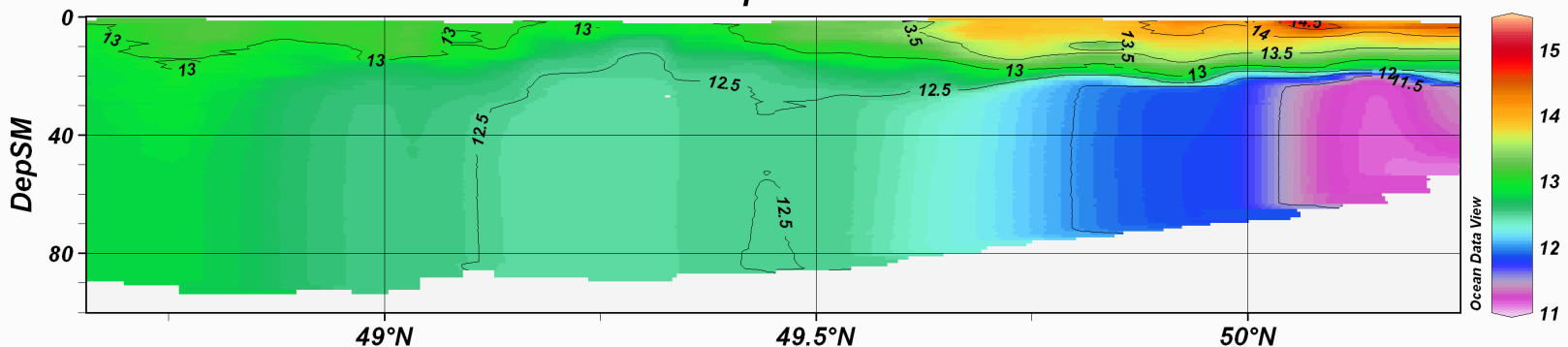


Radiale E-W

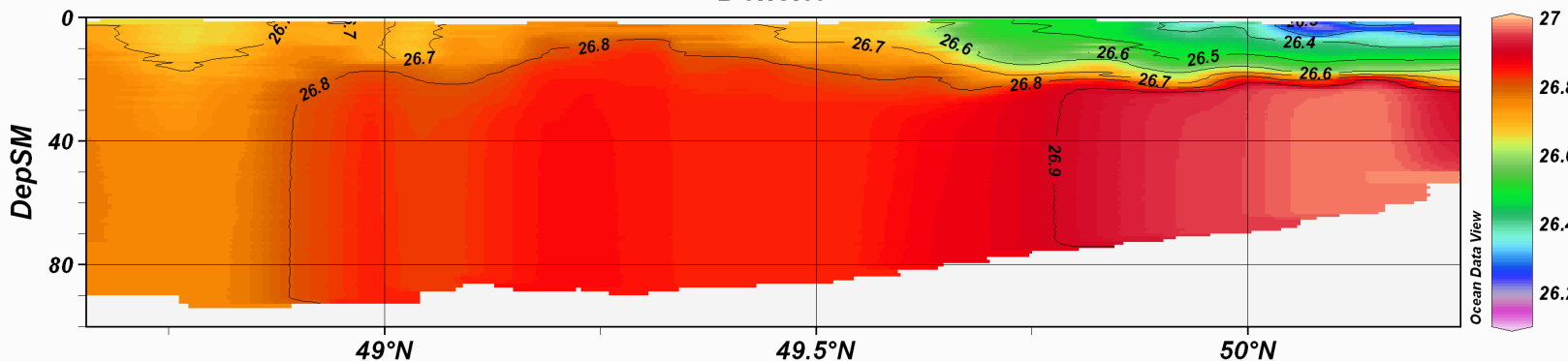


Radiale N-S

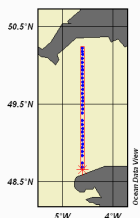
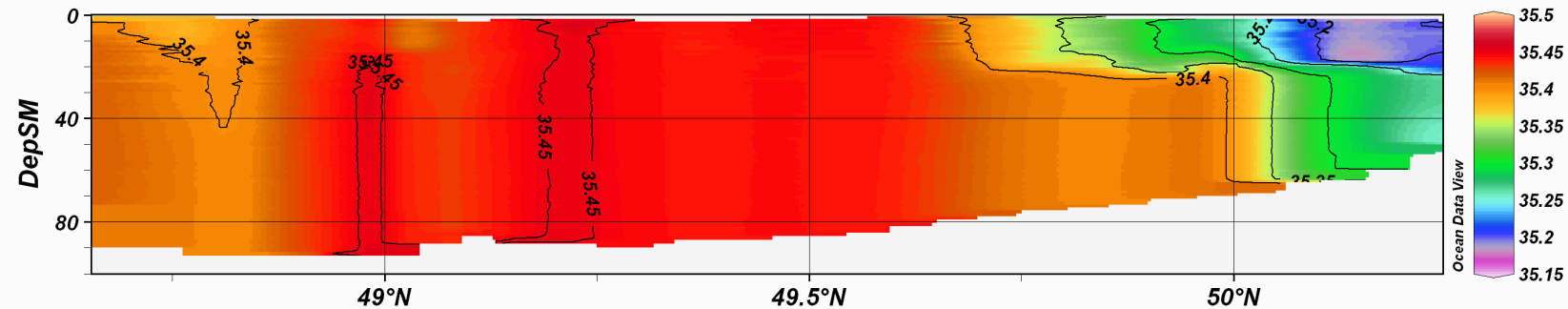
Température



Densité

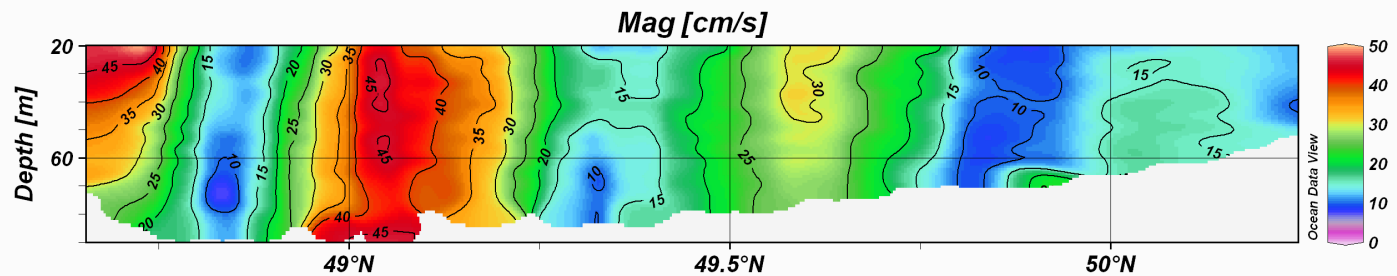
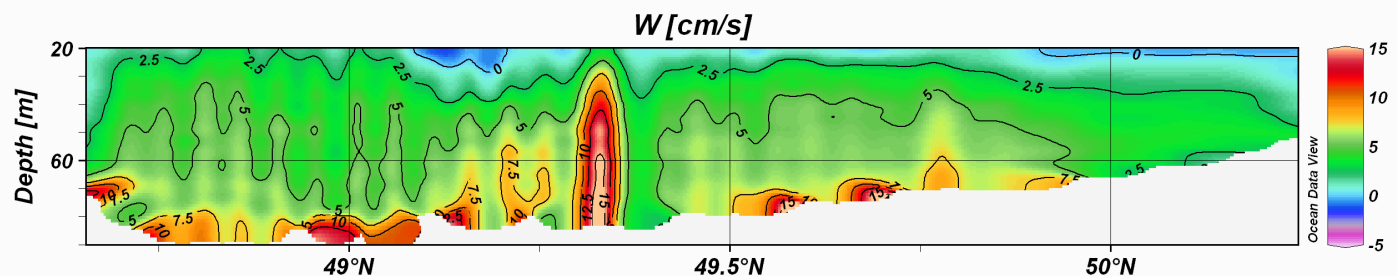
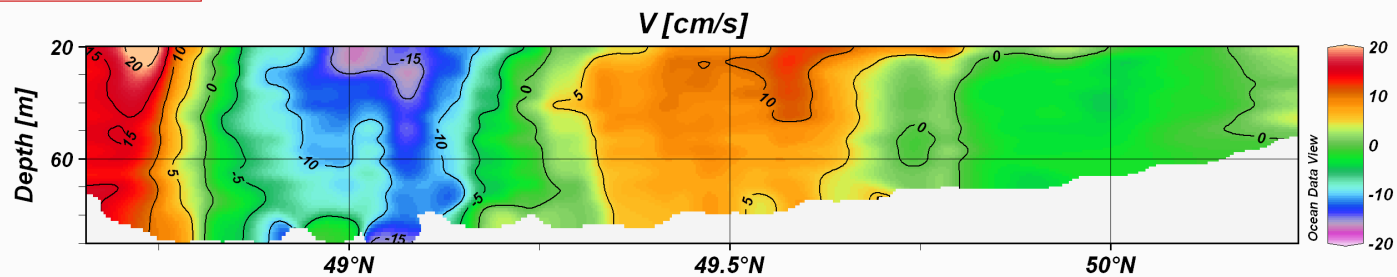
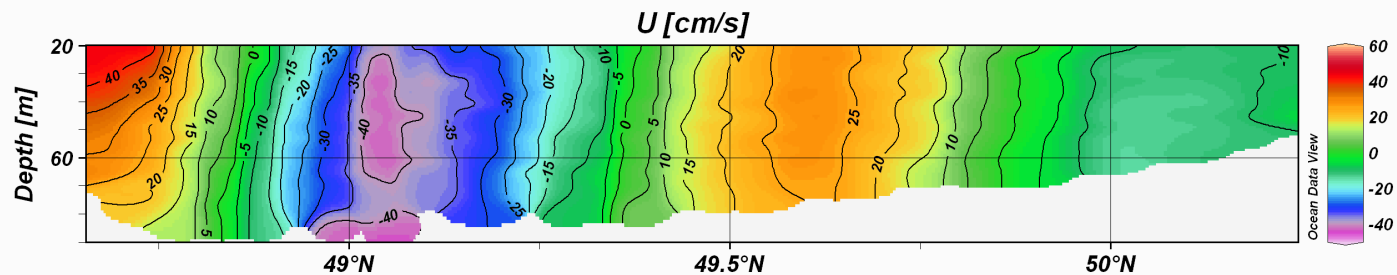
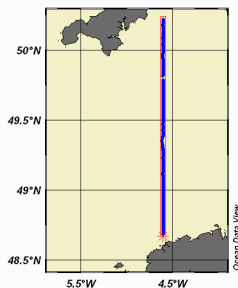


salinité



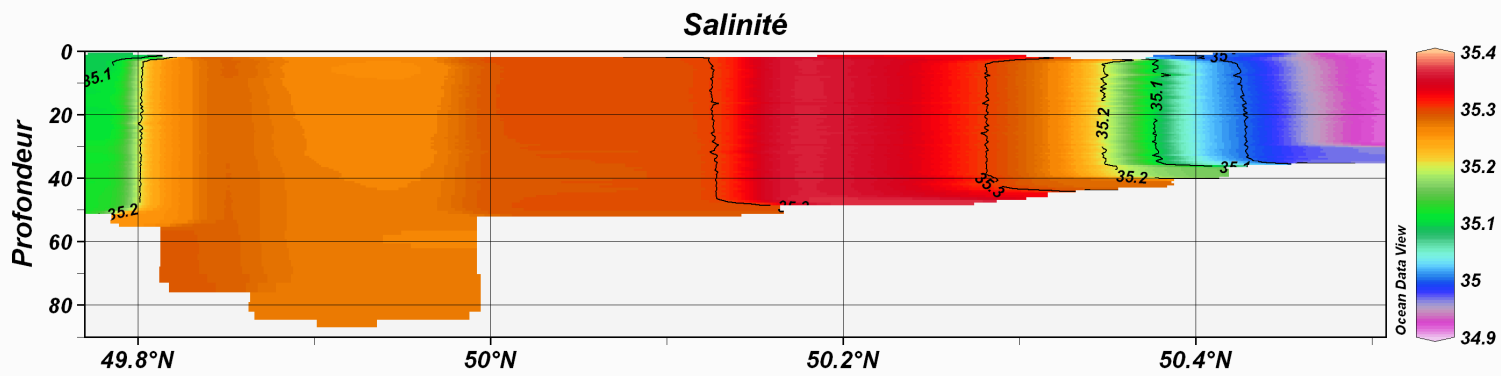
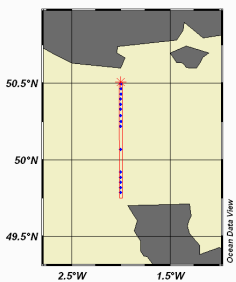
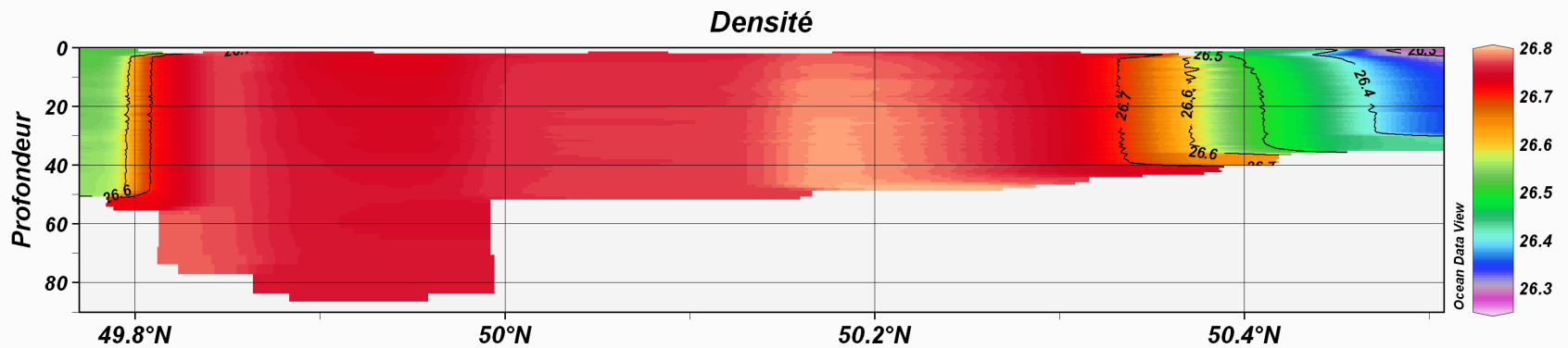
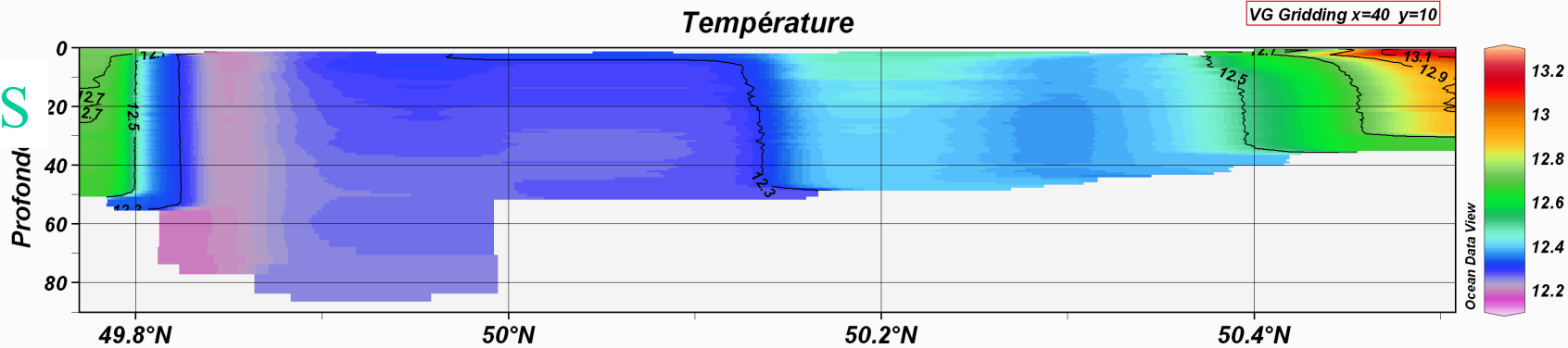
Radiale N-S

Radiale SN CTD_5 - ADCP 150khz - 24/05/2007



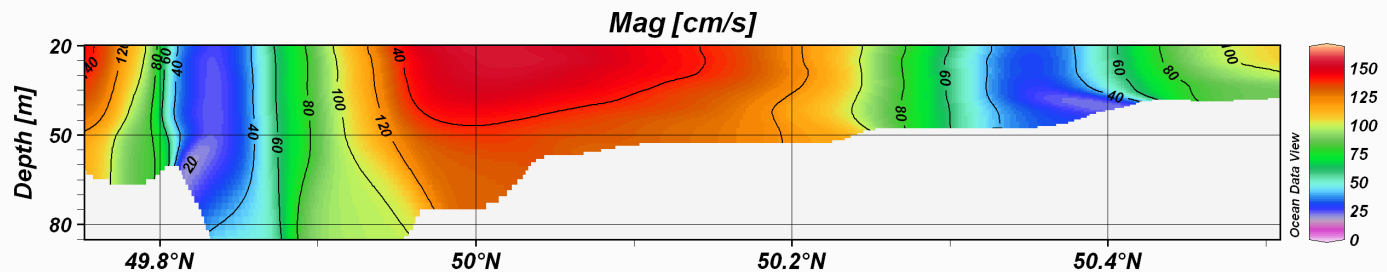
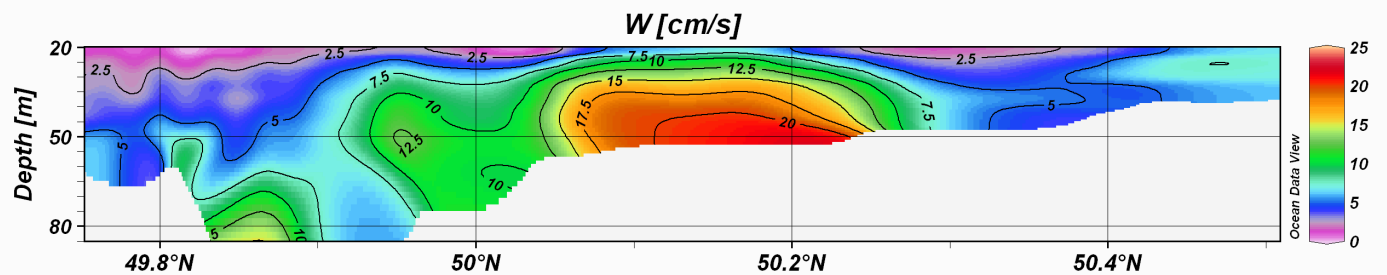
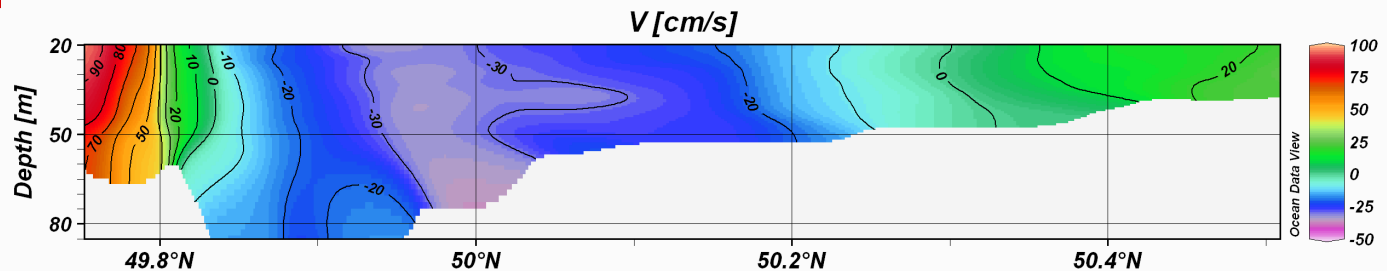
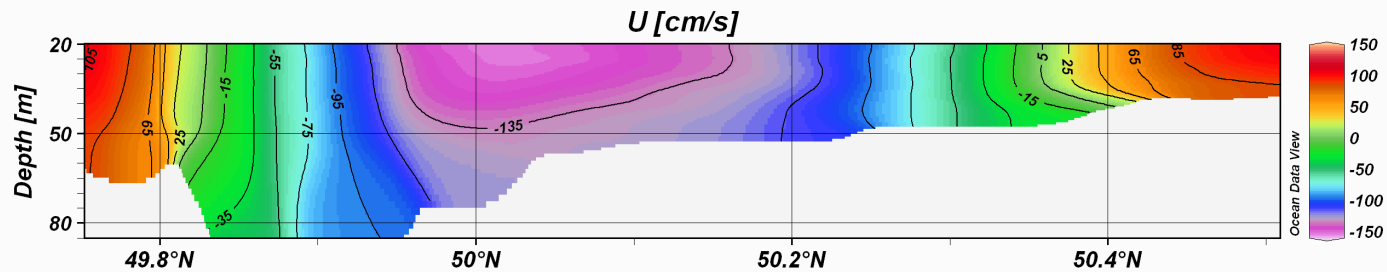
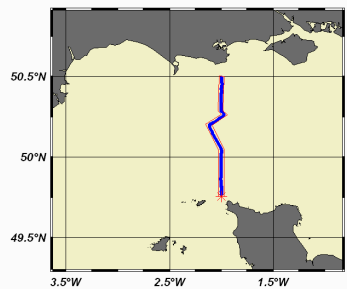


Radiale N-S

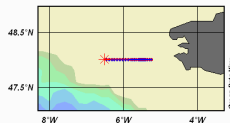
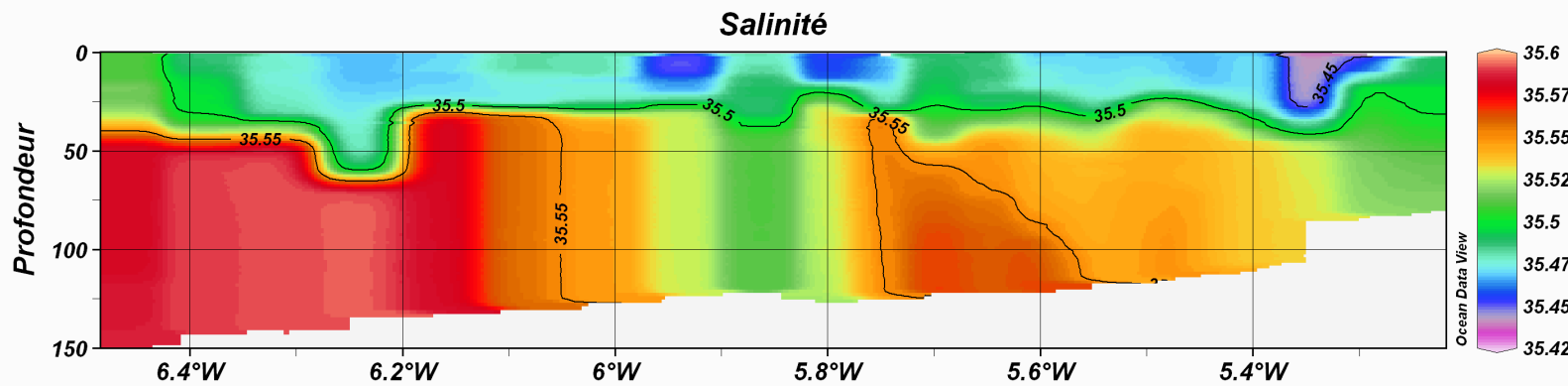
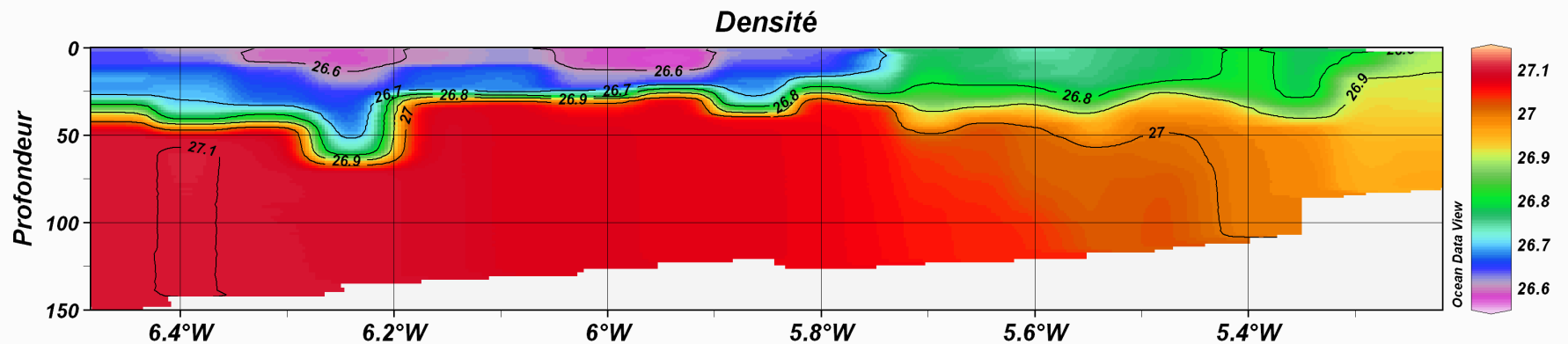
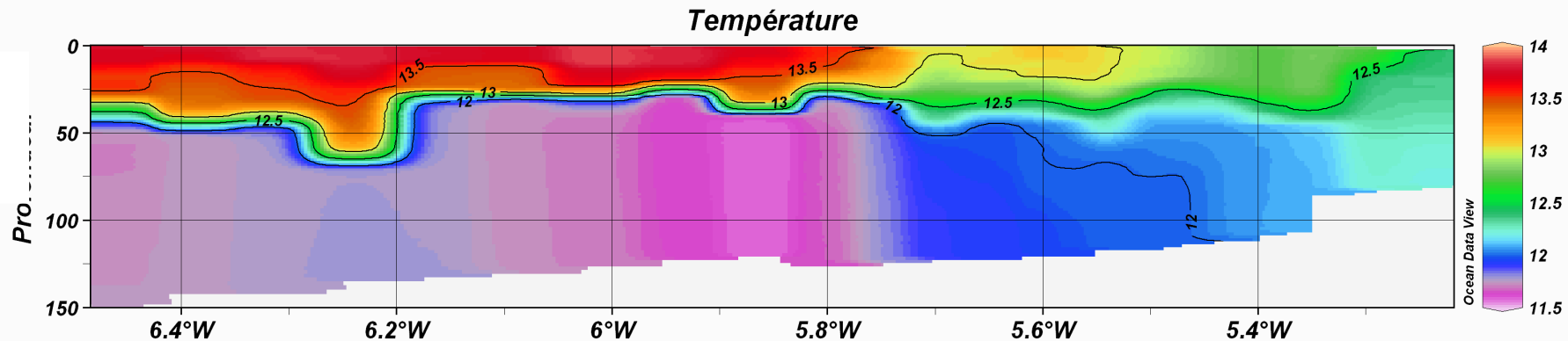


Radiale N-S

Radiale SN CTD_3 - ADCP 150khz



Radiale Iroise



Conclusions

Les processus à étudier :

- Circulation plateau des Landes / échanges côte-large
- Hydrologie / circulation en Manche
- Marée (aliasing courants, ressauts hydrauliques)
- front d'Ouessant début printemps