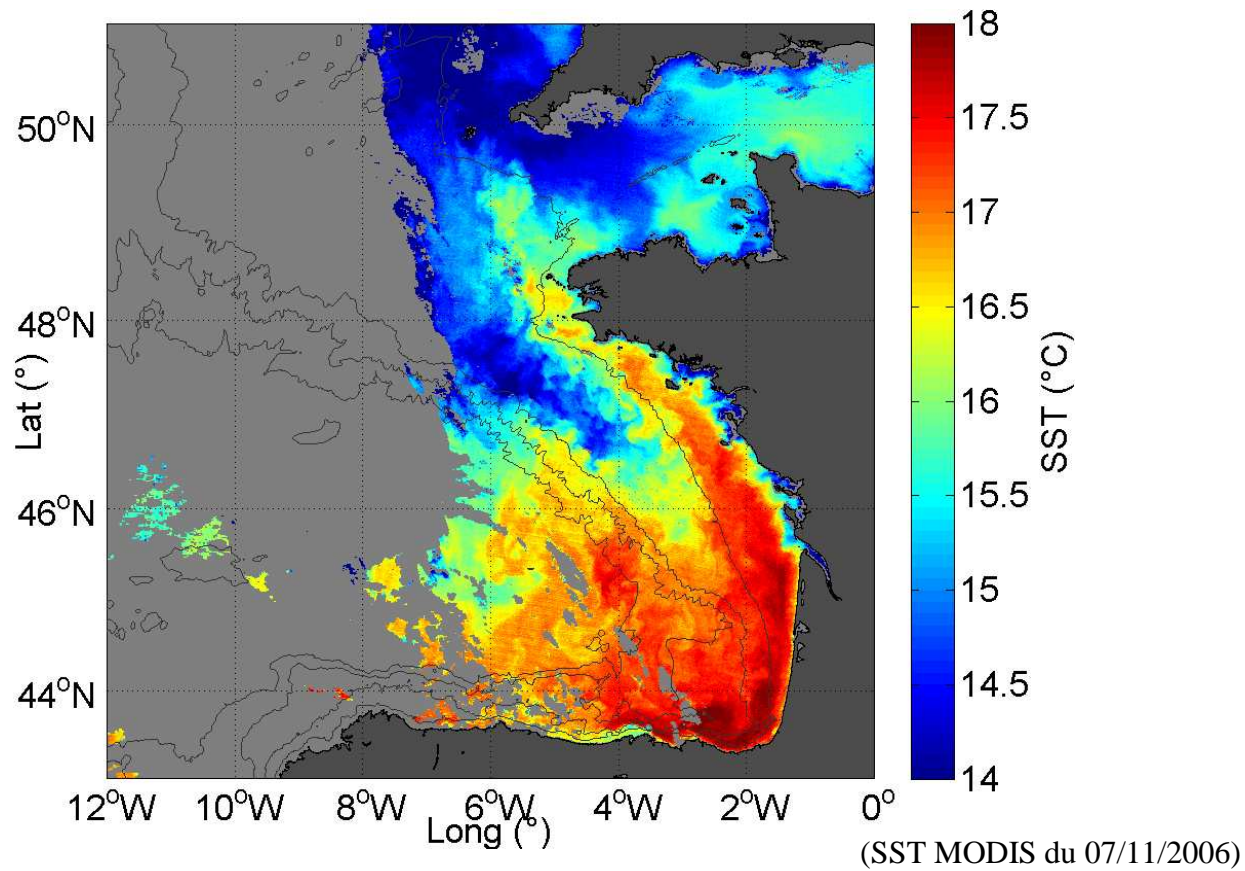
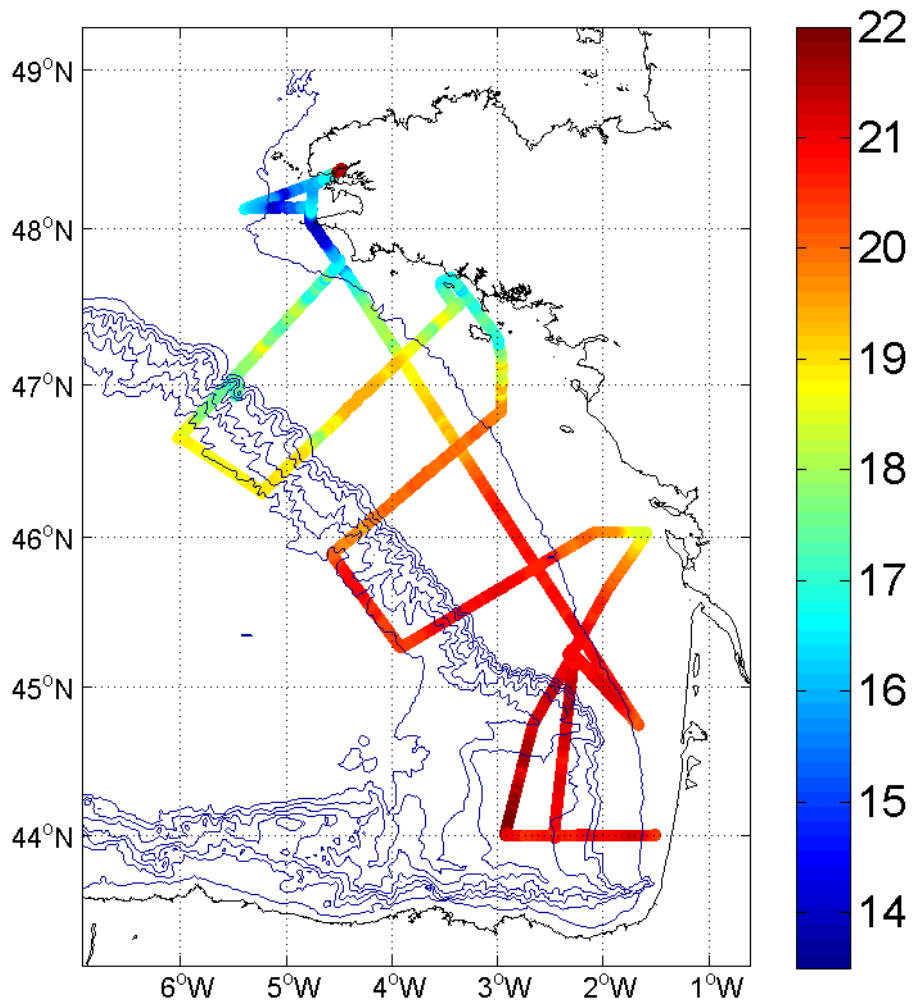


Campagne ASPEX 2009



L. Marié
Meeting EPIGRAM du 16/11/2009

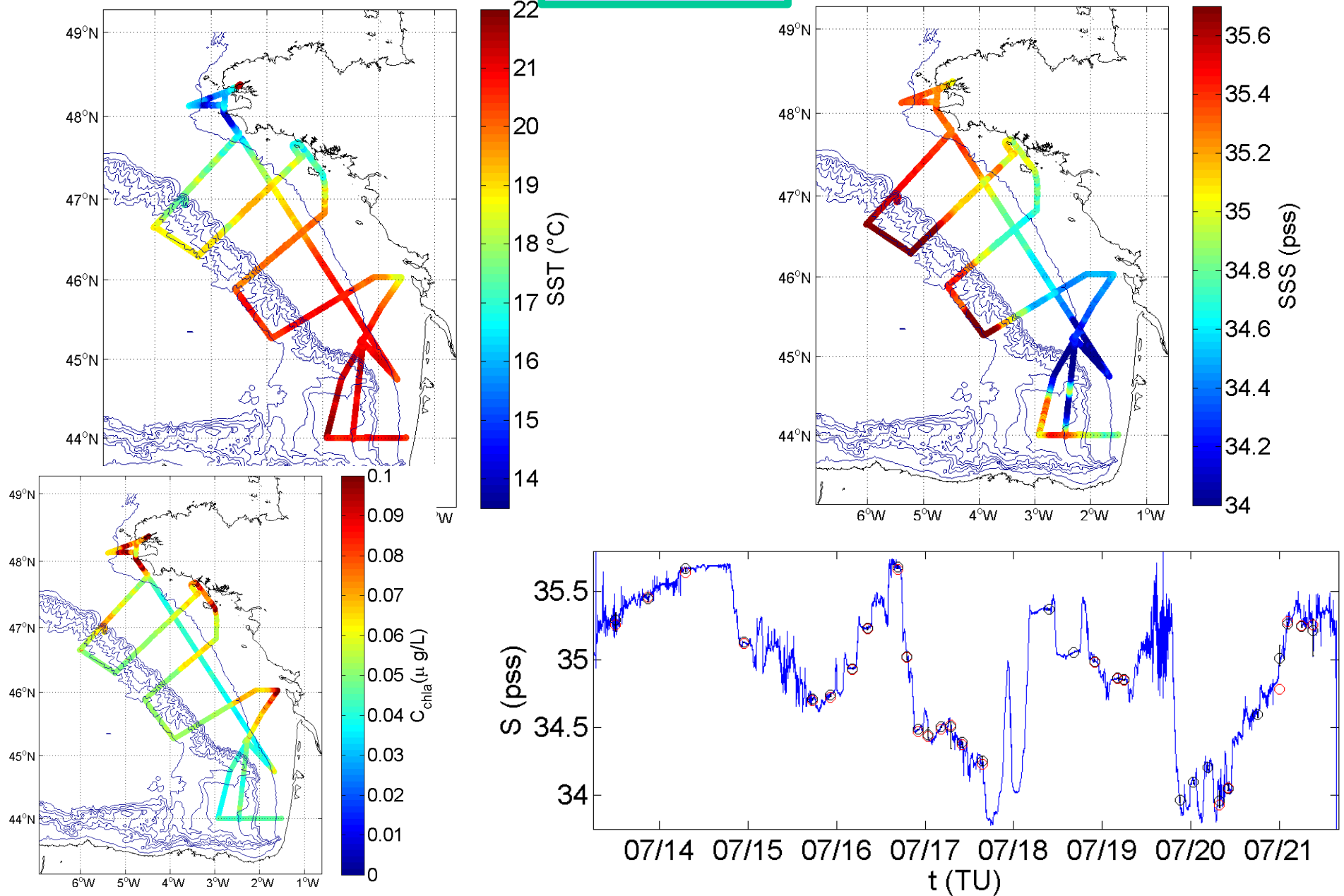
Bilan



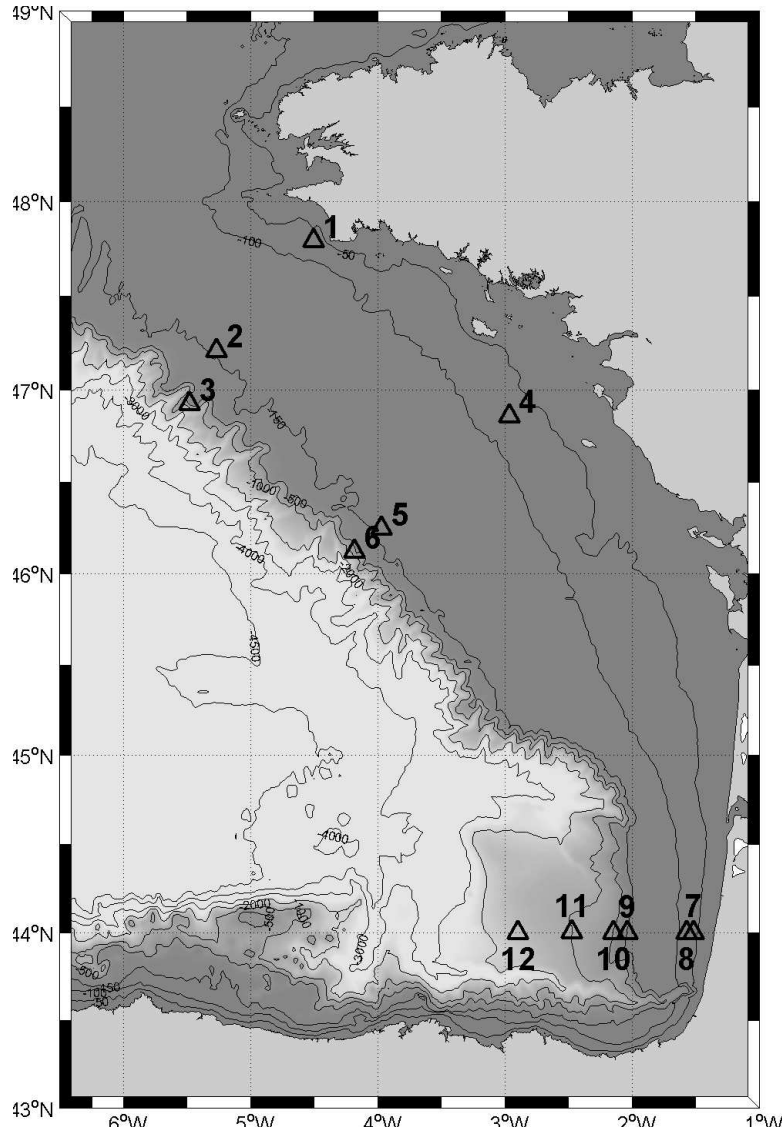
Bilan:

- Du 13/07/2009 au 21/07/2009.
- TSG + VMADCP (NB75 + BB150).
- 9 sections Scanfish
(> 750 milles, T,S, Fluo, Turb.)
- Mise à l'eau 12 mouillages.
- 8 bouées dérivantes
(4 x 75m, 2 x 50m, 2 x 15m)
- 2 PAGODEs (1 en fonctionnement).
- 2 stations CTD profondes.
- 12 stations CTD.

Bilan TSG



Bilan mouillages



10 châssis ADCP + SBE37.
(4 x 300 kHz, 3 x 150 kHz, 3 x 75 kHz).

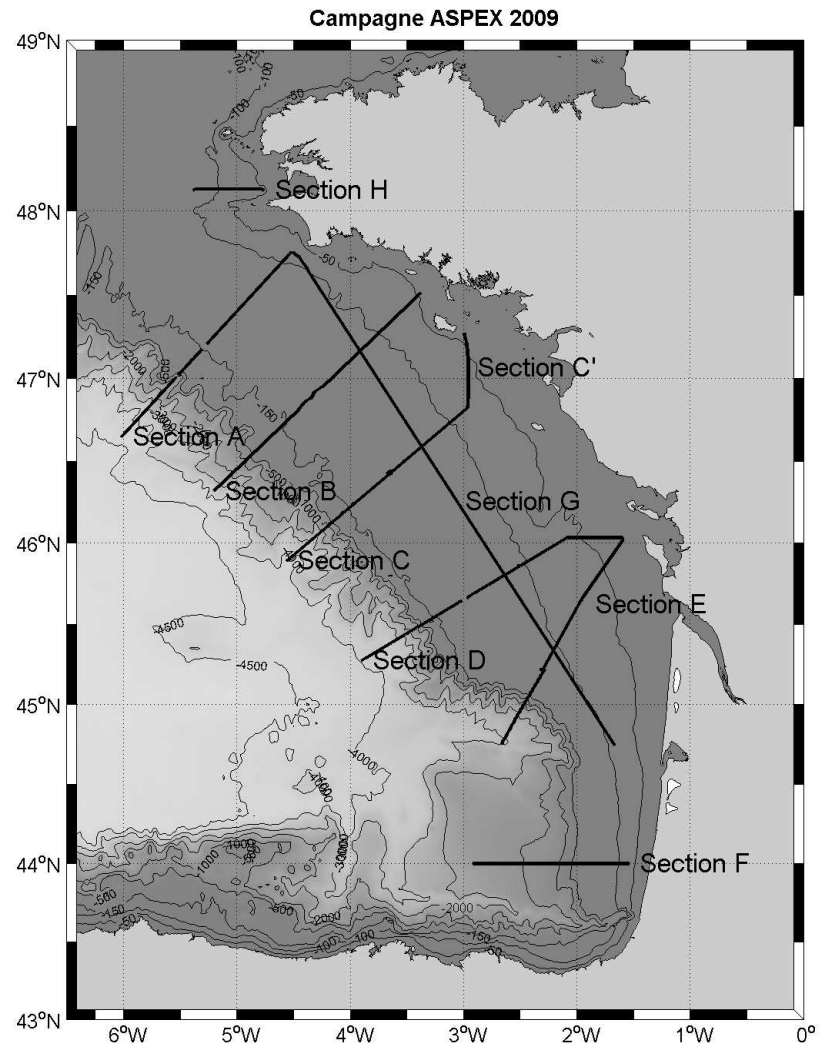
2 mouillages filaires

11 : sonde 1000 m,
ADCP 75 kHz en tête (400 m)
3 niveaux Aquadopp + SBE37
(600, 800 et 950 m).

12 : sonde 1500 m,
ADCP 75 kHz en tête (400 m)
5 niveaux Aquadopp + SBE37
(600, 800, 1000, 1200, 1400 m).

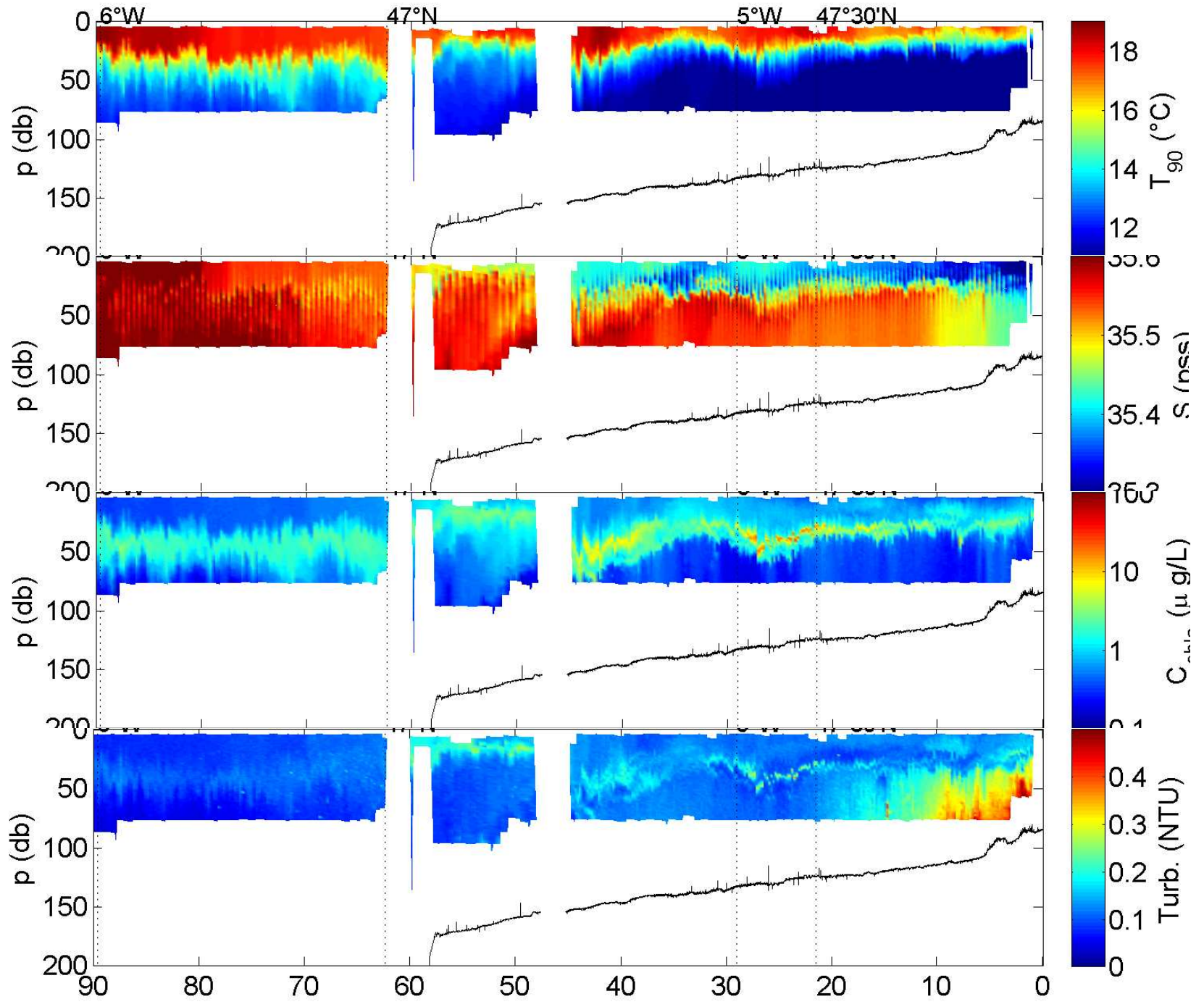
Relevage prévu en mai 2010 (Suroit).

Bilan Scanfish (1)

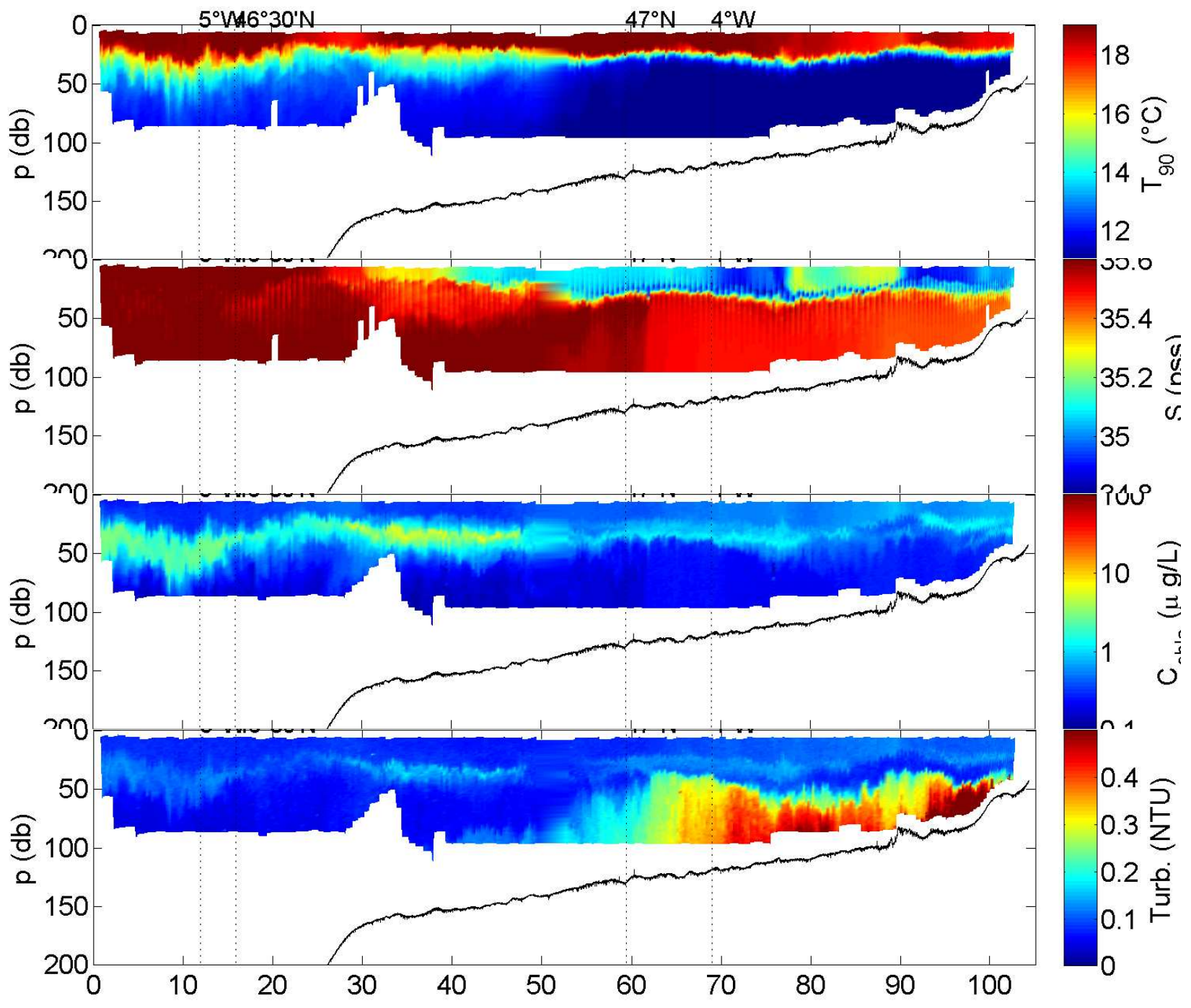


9 sections (> 750 milles)

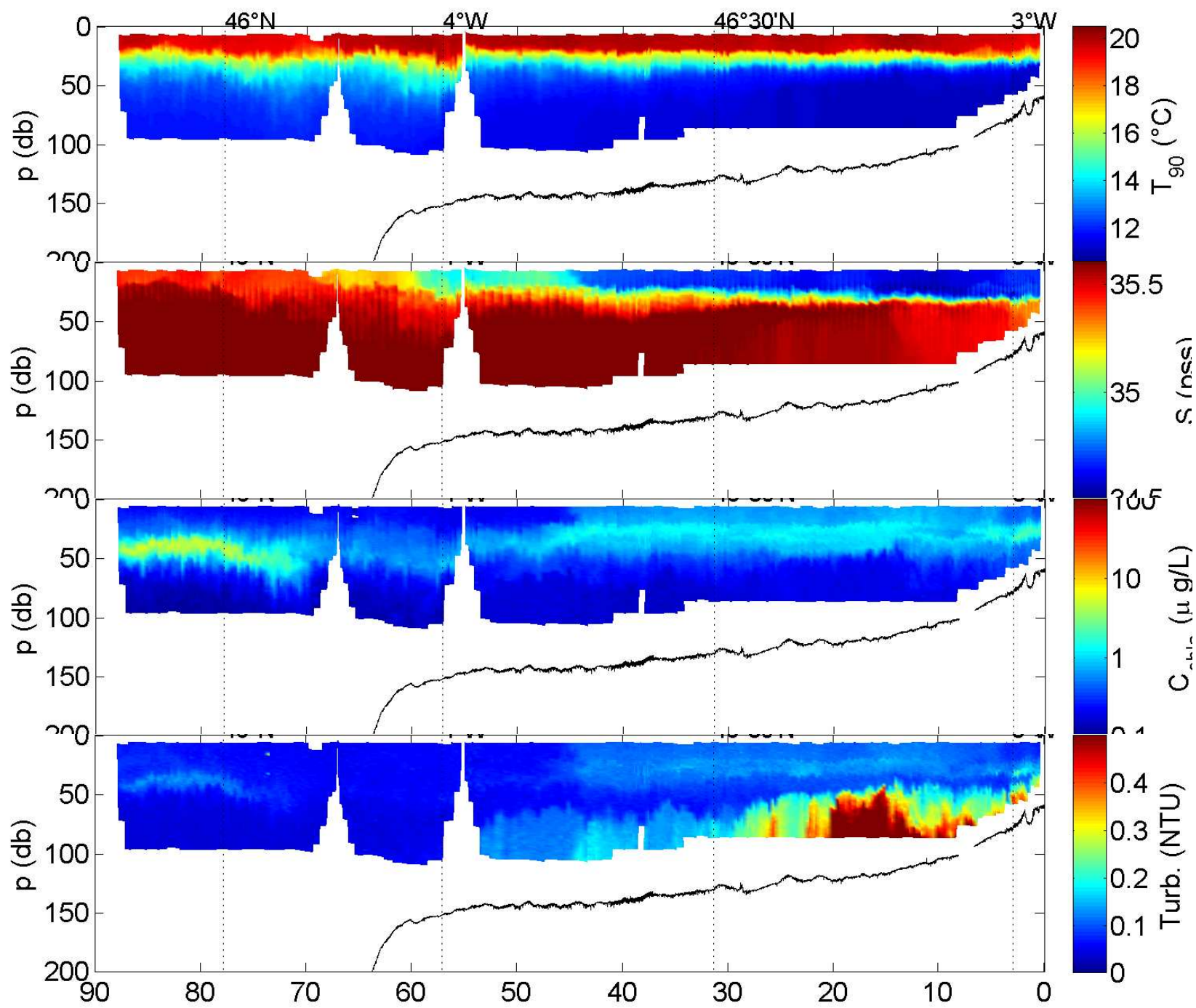
Section A (Penmarch' -> Talus)



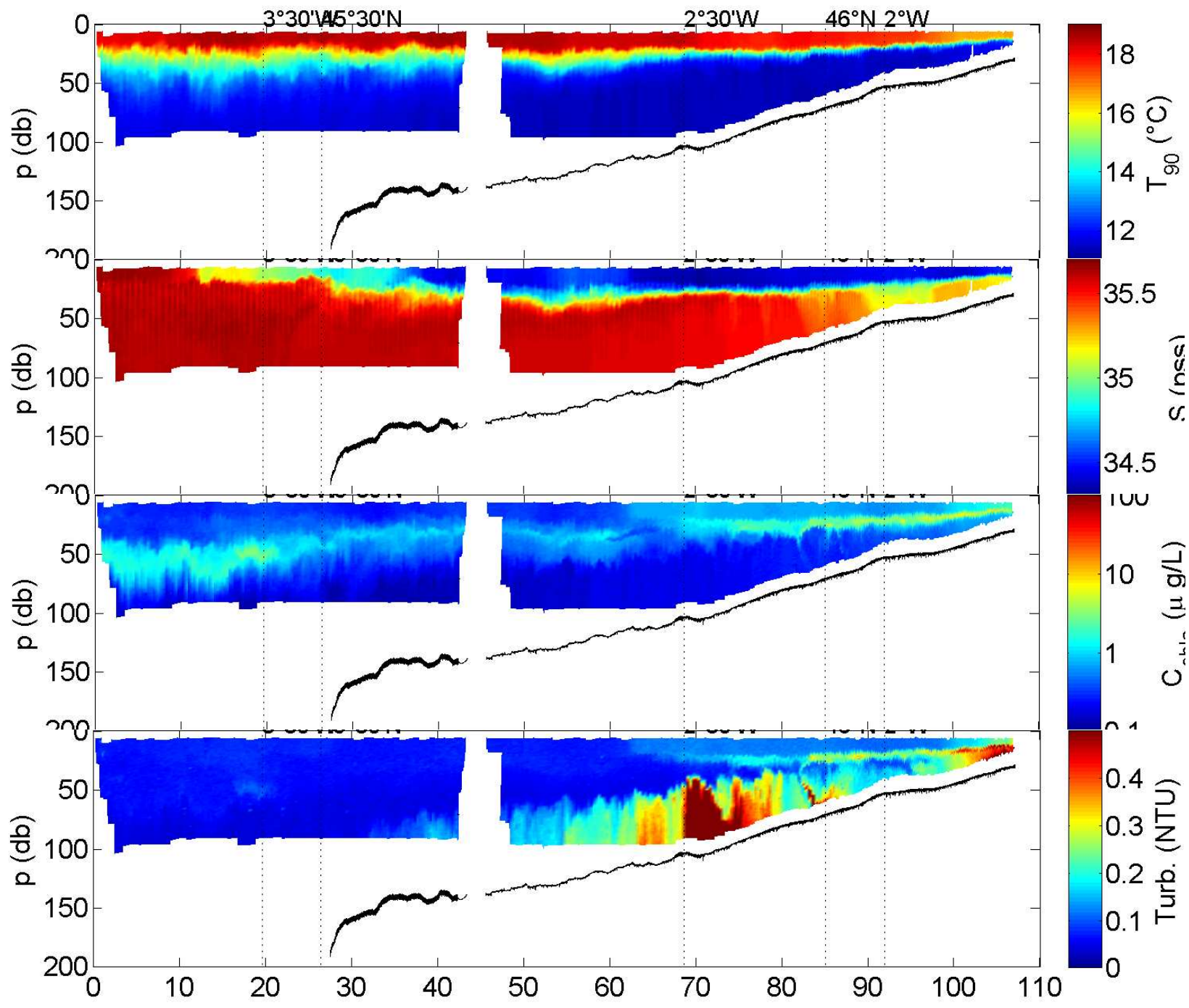
Section B (Talus -> Lorient)



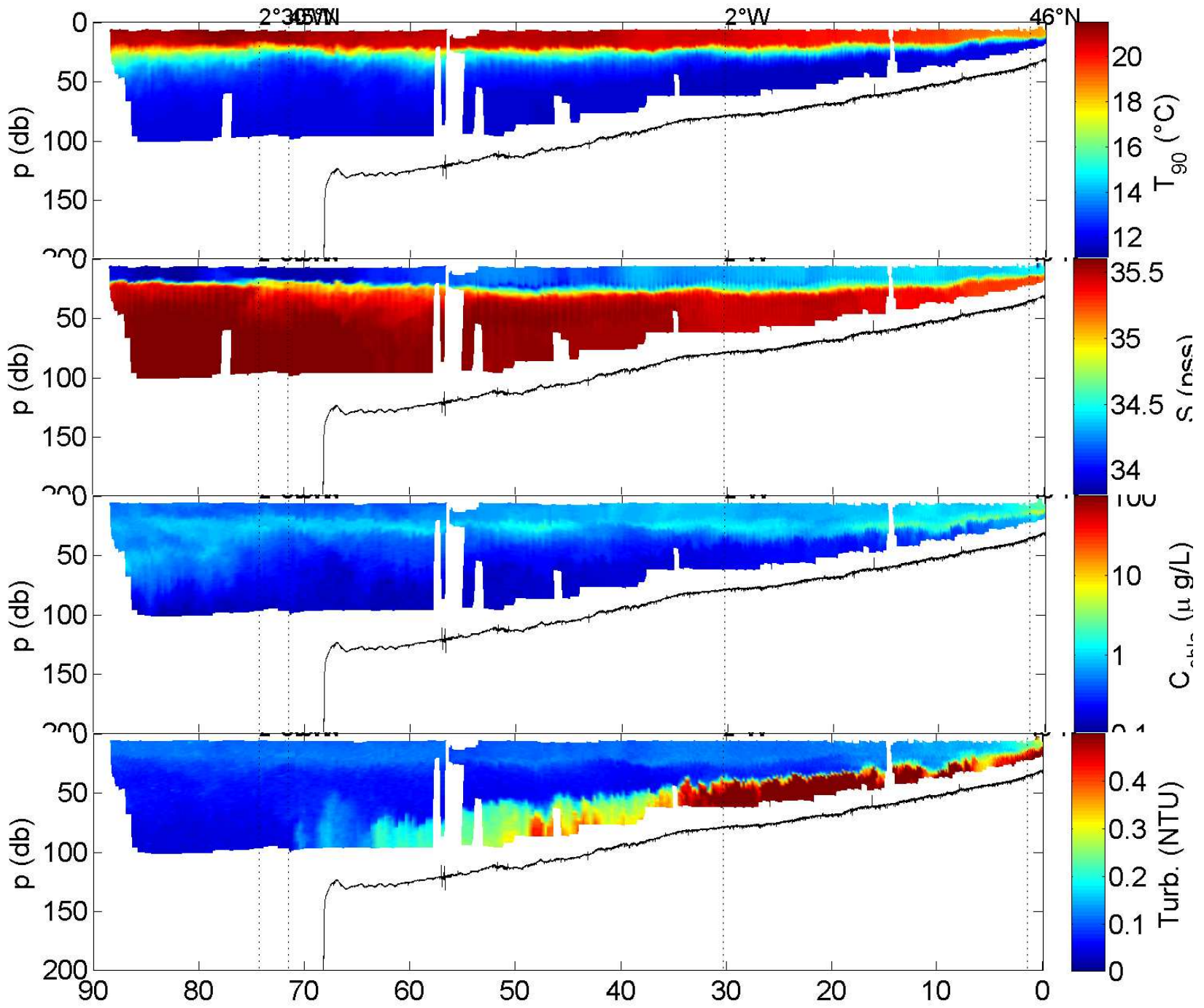
Section C (Loire-> Talus)



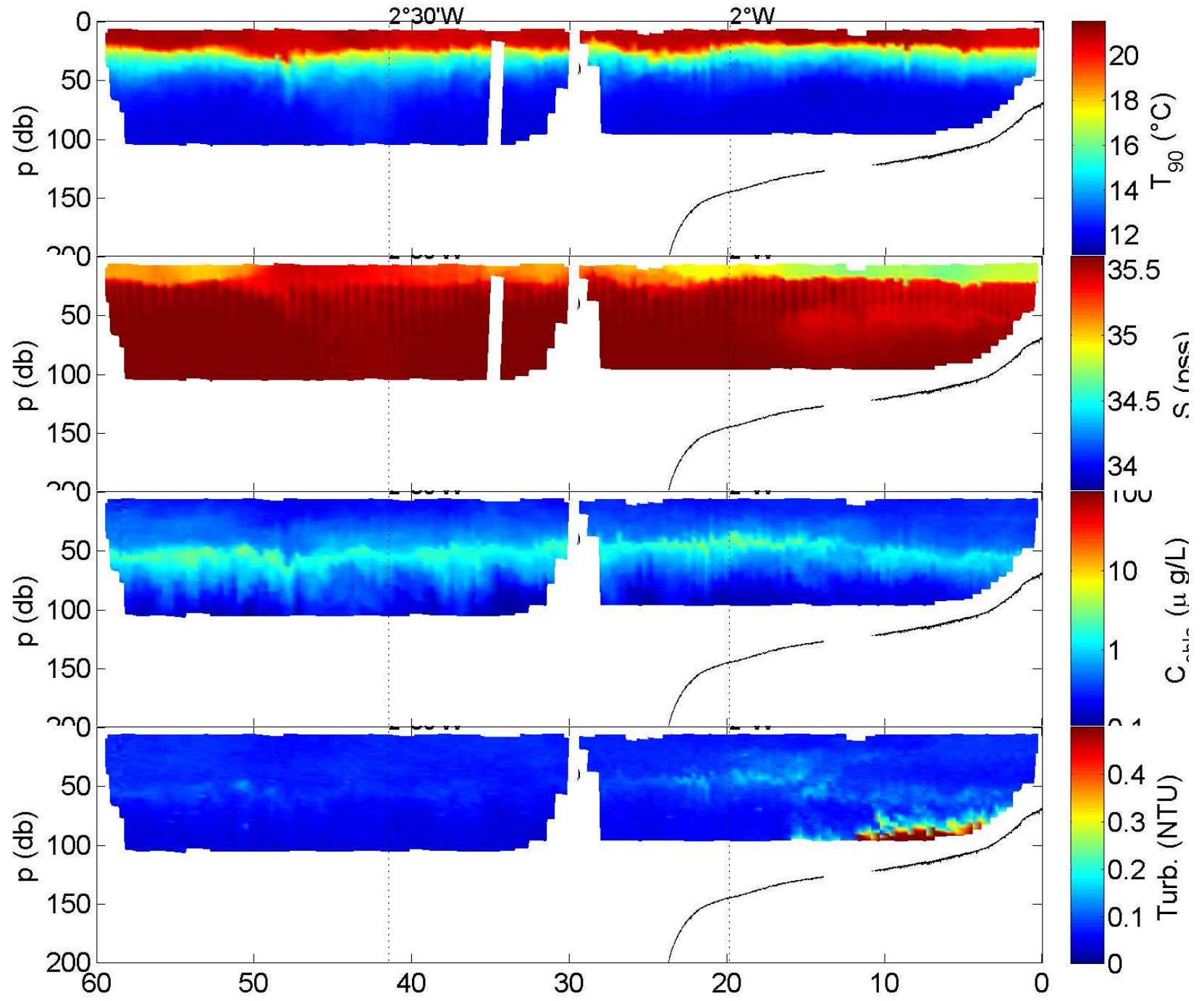
Section D (Talus->Pertuis)



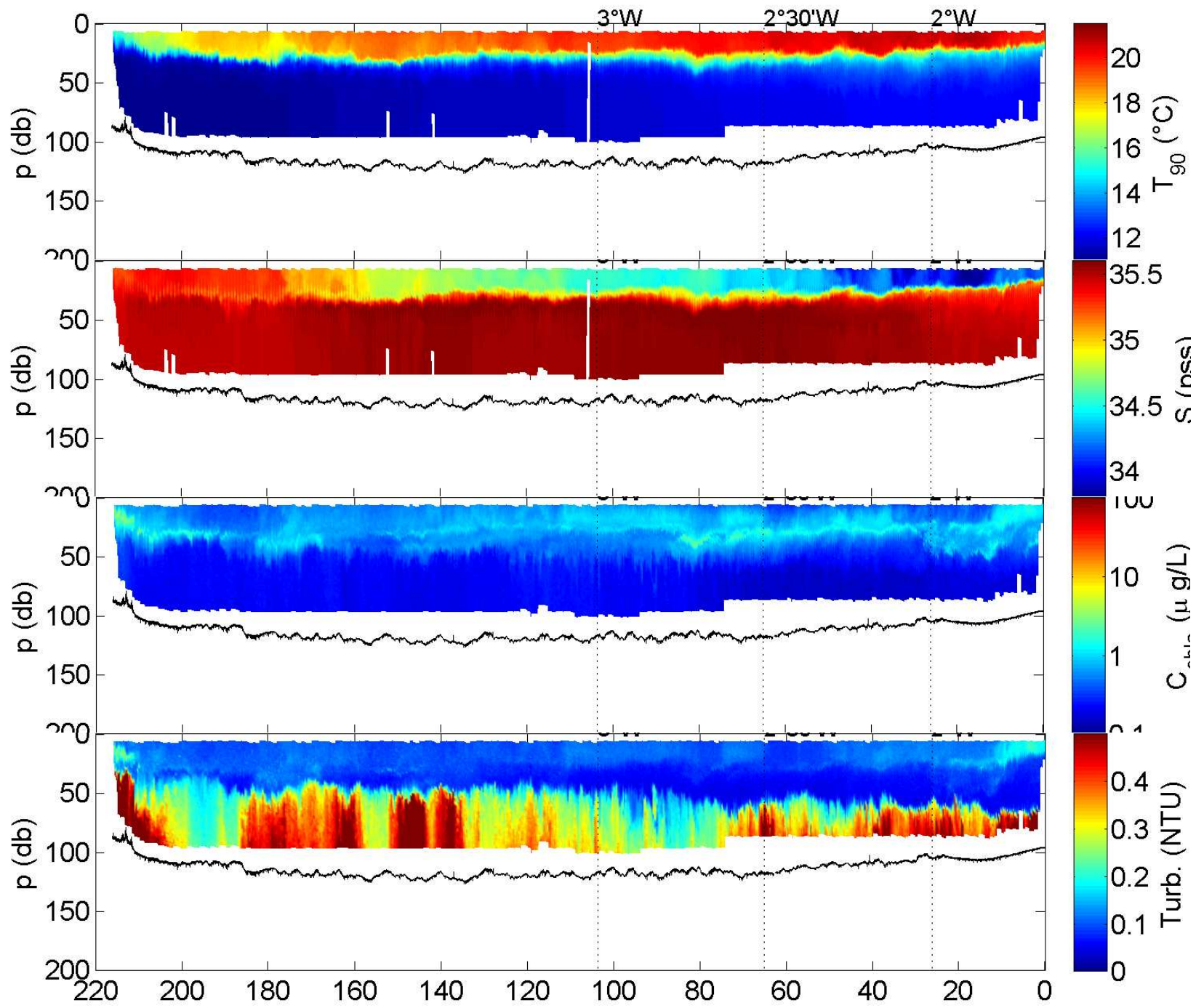
Section E (Pertuis-> Talus)



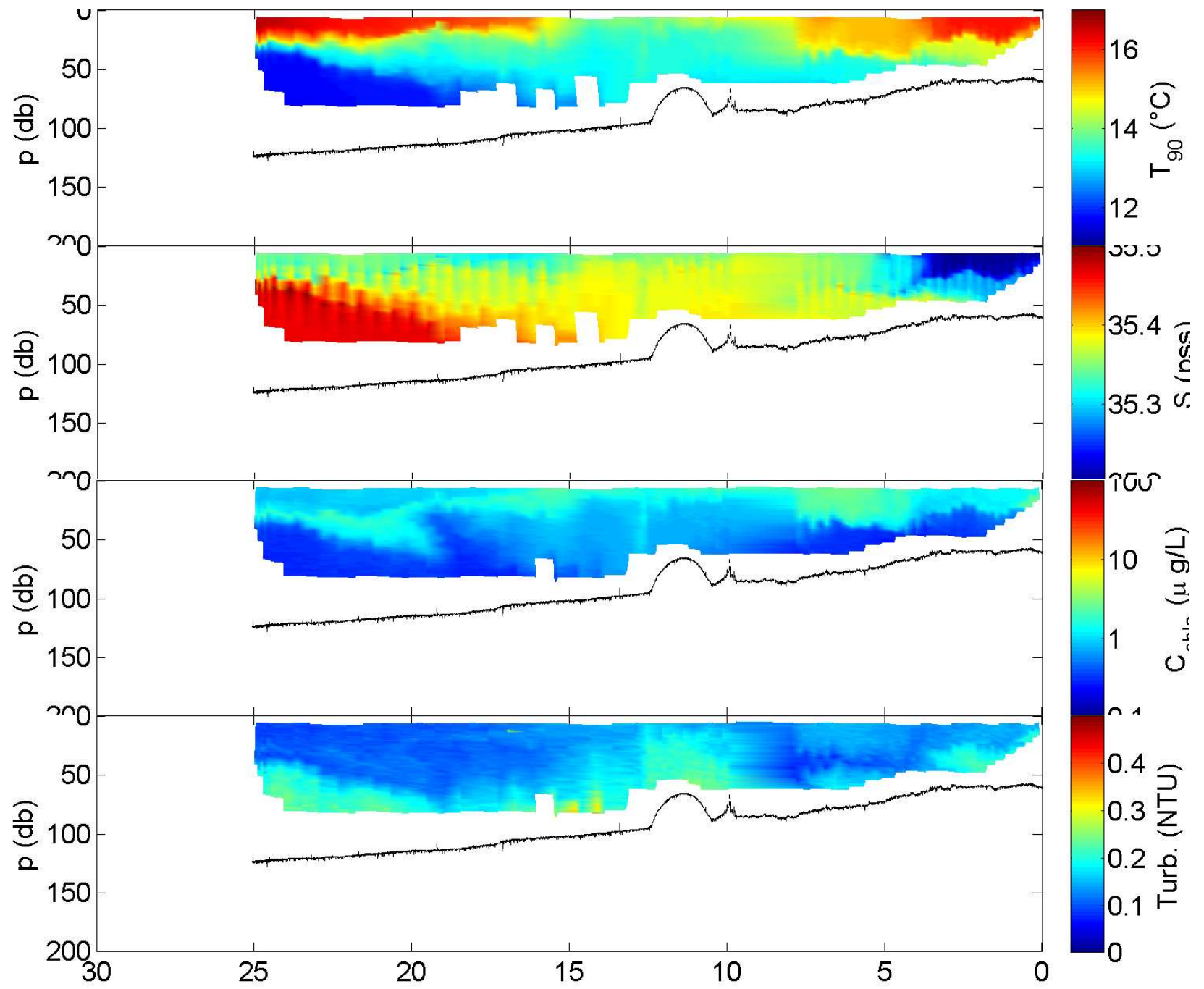
Section F (Radiale mouillages Landes)



Section G (Arcachon -> Penmarch)

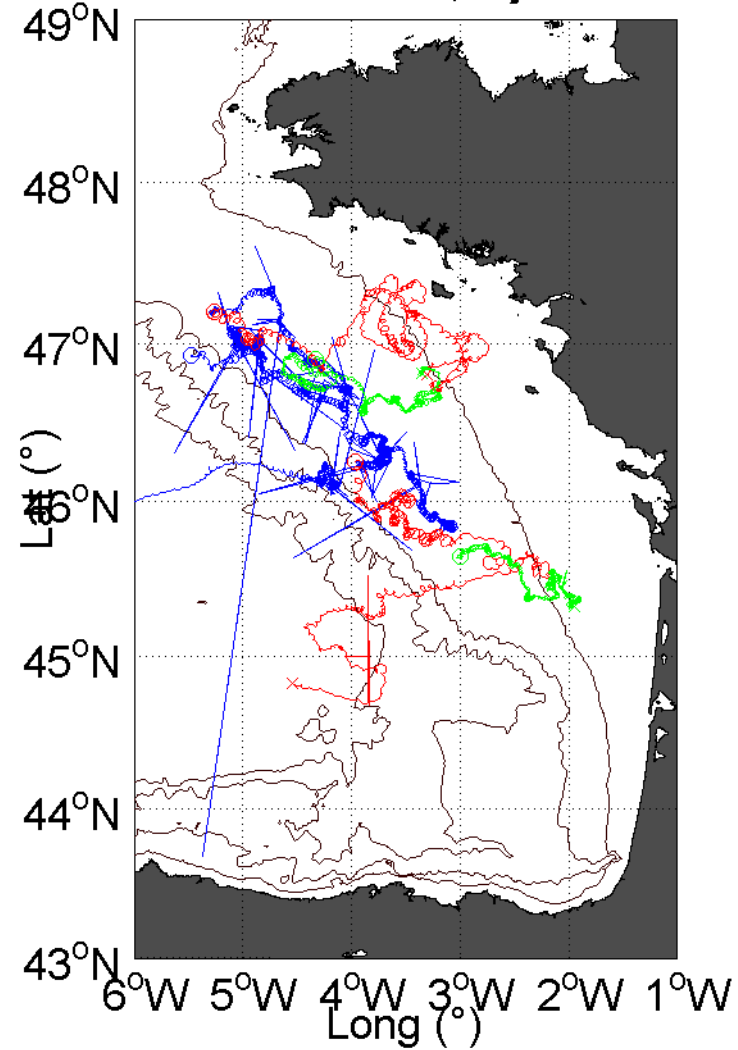


Section H (Front d'Ouessant)

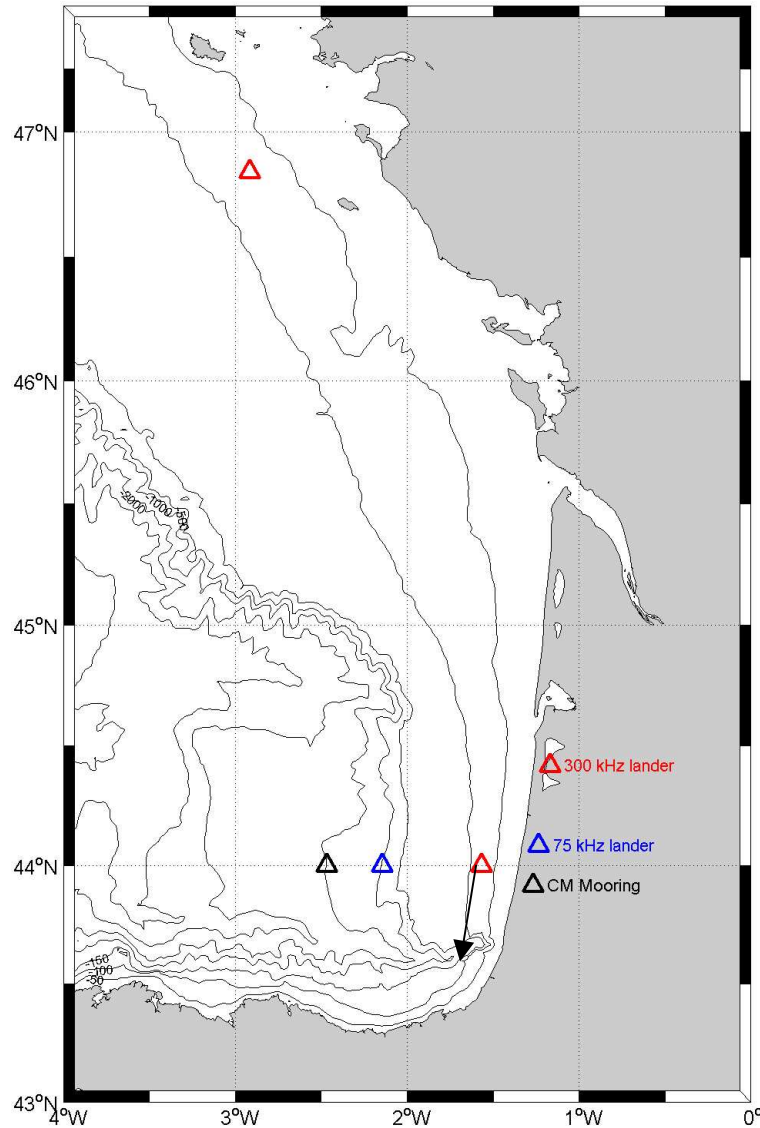


Bilan bouées

Trajectoires de toutes les bouées, à jour au 17/10/2009 02:00



Bilan ASTEX



3 châssis ADCP + SBE 37,
1 mouillage filaire.

Mouillés en septembre 2008 (coll SHOM)
Récupérés en mai 2009 (coll G. Reverdin)

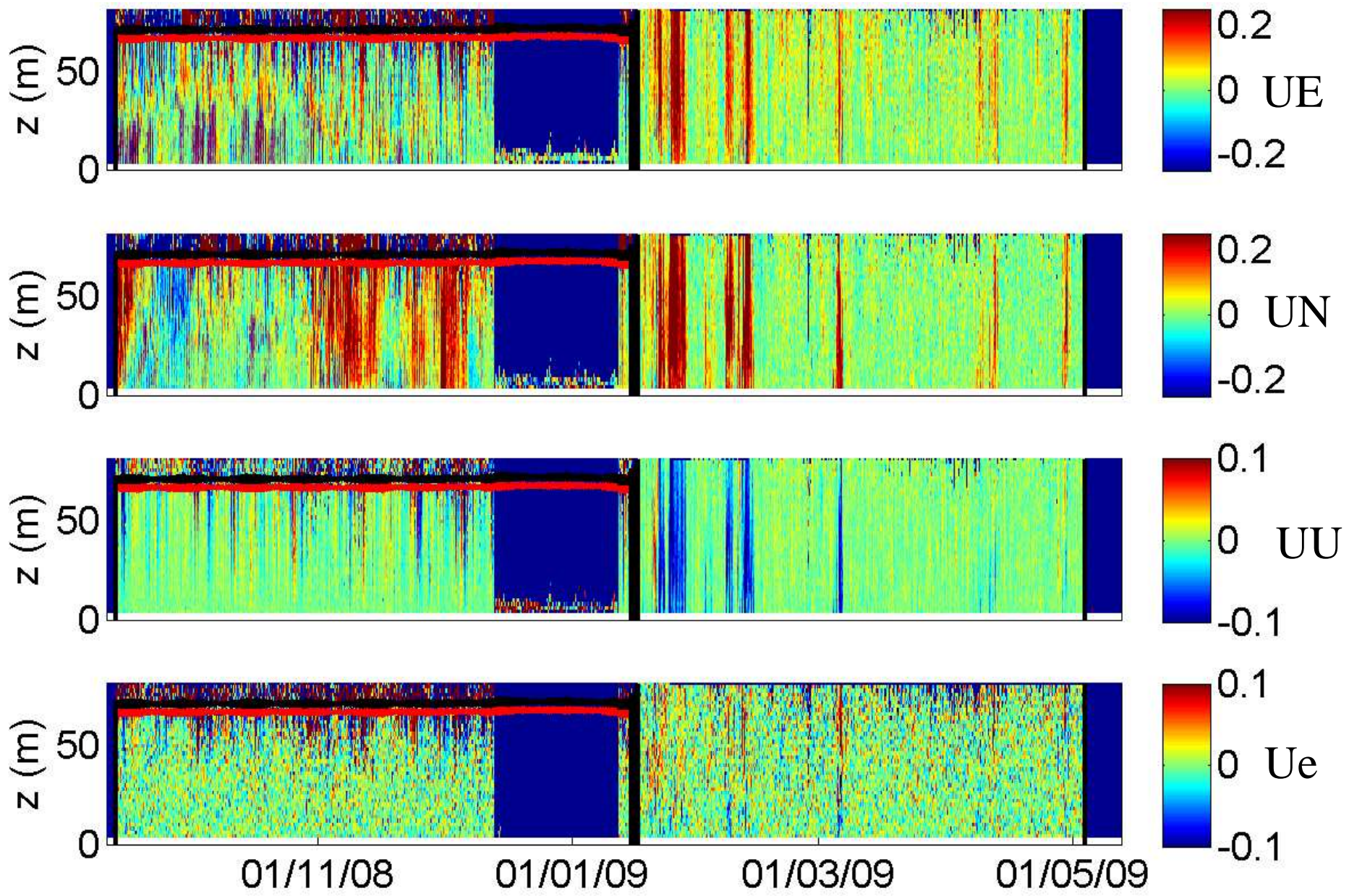
Bilan: ASTEX 1 (filaire) 100 % OK.

ASTEX 2 (75 kHz): ADCP aveugle,
SBE37 HS (chalutage).

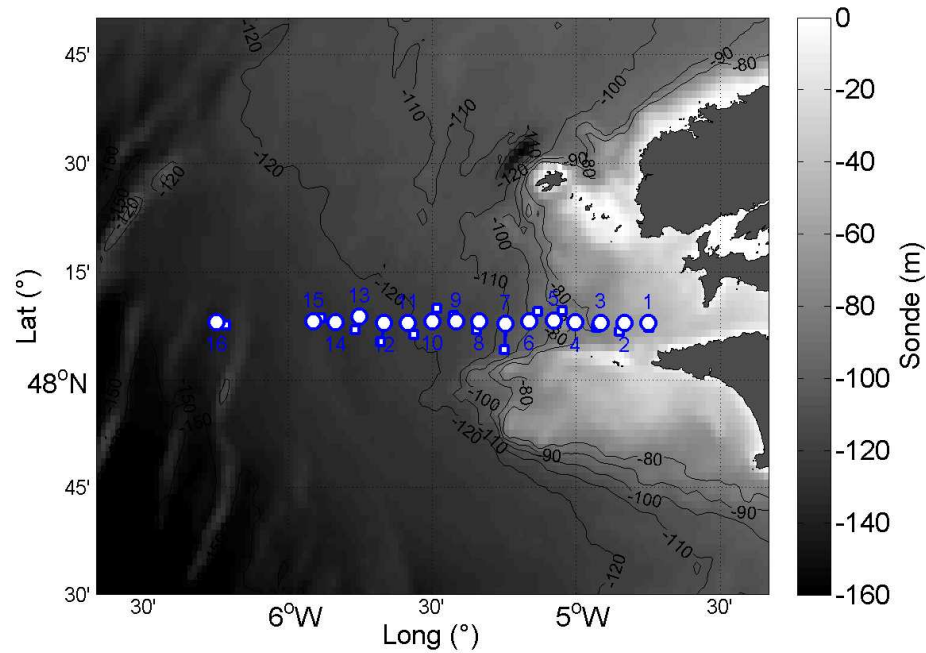
ASTEX 3 (300 kHz): Chaluté 3 fois,
100% OK.

ASTEX 4 (300 kHz): 100 % OK.

Vitesse ASTEX 3 (300 kHz radiale sud)



Bilan FROMVAR 2009



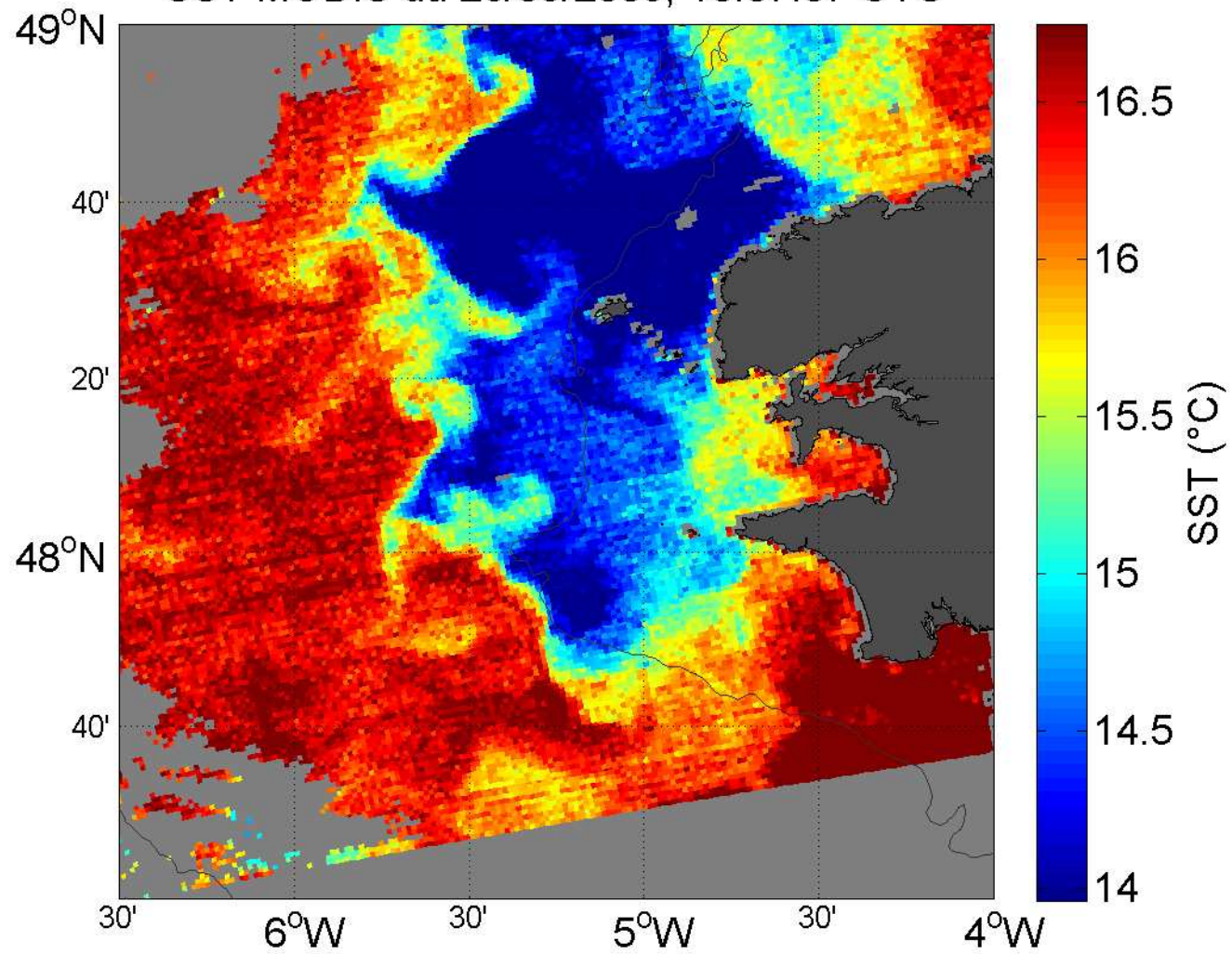
Iroise, du 19/09 au 07/10. R/V Thalia.

3 legs de 5 jours.

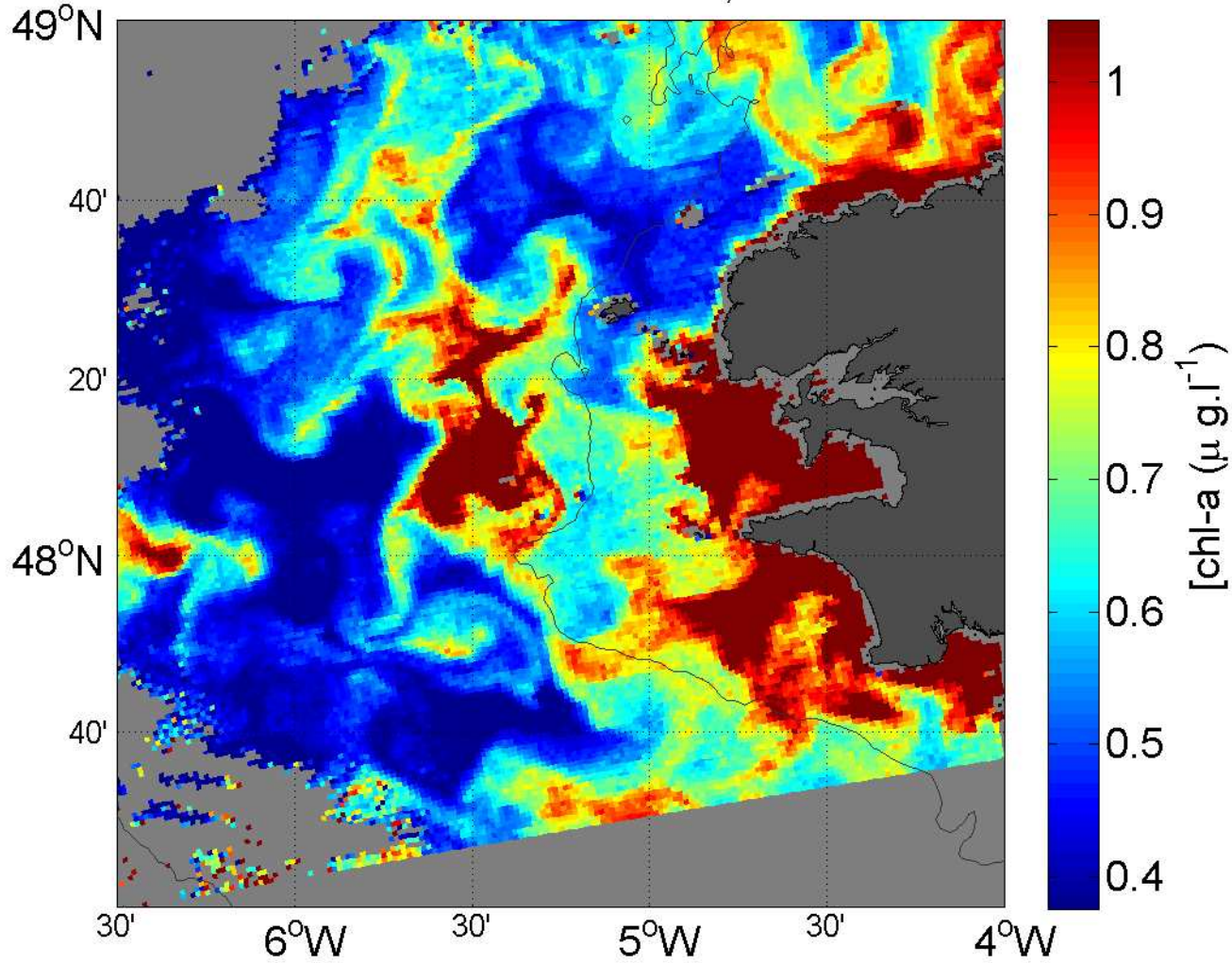
2 premiers legs: mesures de bio + μ structure + Scanfish.

Dernier leg: lâcher de fluorescéine (dur, dur...), sections Scanfish à 4 latitudes.

SST MODIS du 26/09/2009, 13:37:37 UTC



chl-a MODIS/OC3 du 26/09/2009, 13:37:37 UTC



Section Scanfish du 20/09/2009

