



## **PROPOSAL FOR THE THIRD CALL OF TERRITORIAL COOPERATION PROGRAMME SOUTHWESTERN EUROPE SUDOE 2007-2013**

MyOcean V1 Coordinated validation in IBI  
Benefits for EPIGRAM community

**EPIGRAM Meeting May 2012**



## Partnership from Portugal to Aquitaine

**2 years project: 2013-2014; Call March 2nd 2012**

- **AZTI-Tecnalia**
- **CG64**
- **MeteoGalicia**
- **INTECMAR**
- **IH**



## Specific objectives

- **Coordinate “intermediate users” activities in SUDOE for “downstream services” and feedback to the “Core Service” of MyOcean. Process oriented validation.**
- **Develop and optimize coastal observing systems, in particular transnational HF radars networking.**
- **To capitalize on transnational coastal operational oceanography systems LOREA and RAIA:**
  - **coordinating the continuity of consortium alliances (administrations, stakeholders, research institutes, private companies, users associations, etc) in transnational areas RAIA and LOREA**
  - **maintaining LOREA and RAIA data platform and connecting to IBI/MyOcean platform**
  - **including research input for validation.**



## Coastal Intermediate users

To organize the validation of MyOcean V1 in a coordinated way in SUDOE area with *Intermediate Users* perspectives

Based on:

- Available Observing Systems

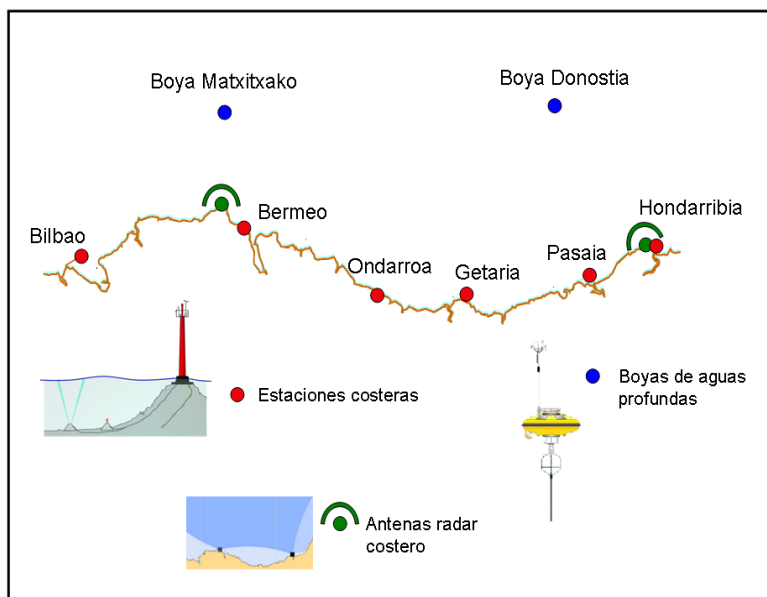


## Coastal Intermediate users

To organize the validation of MyOcean V1 in a coordinated way in SUDOE area with *Intermediate Users* perspectives

Based on:

- Available Observing Systems



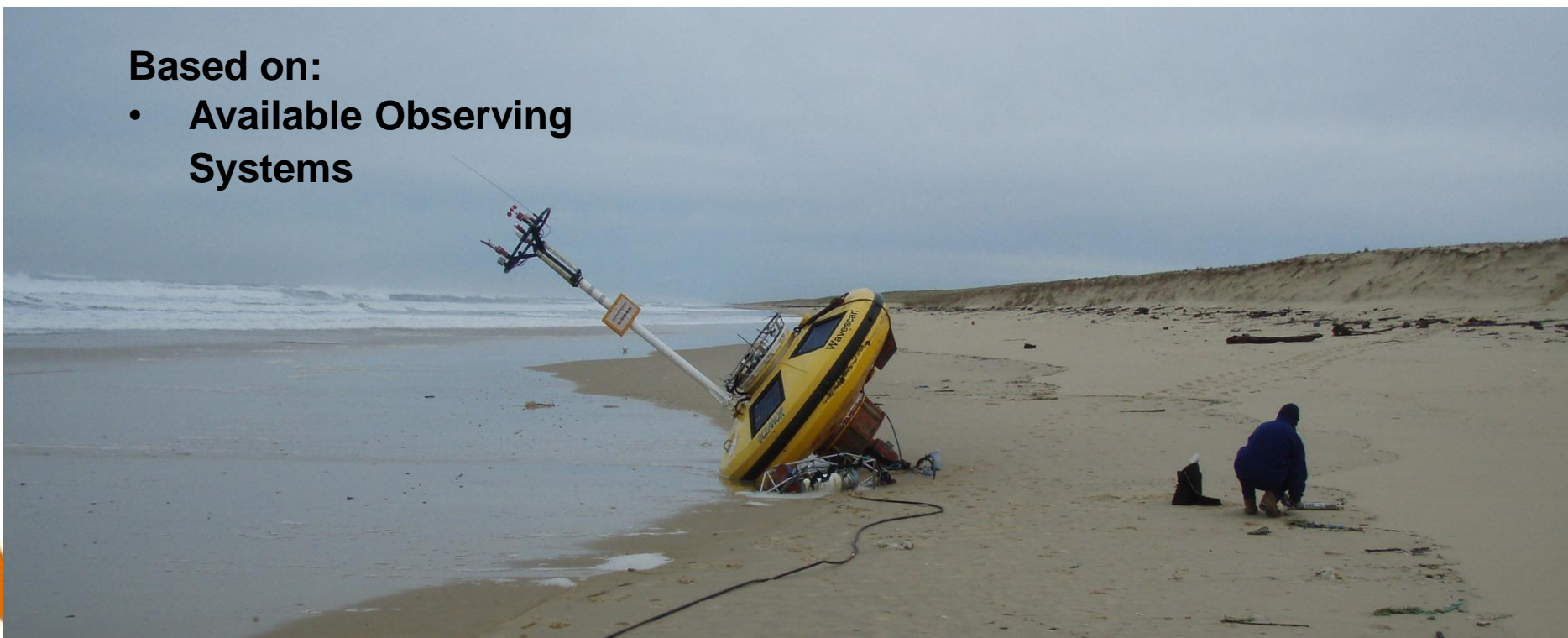


## Coastal Intermediate users

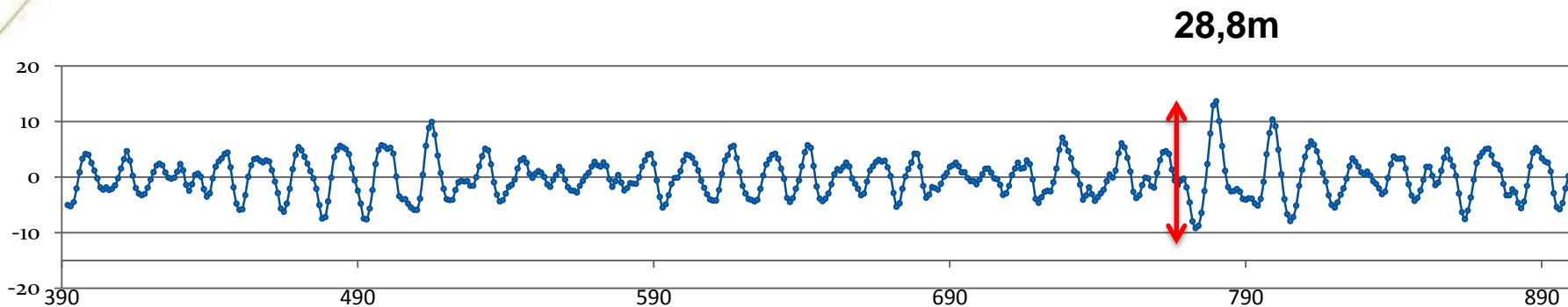
To organize the validation of MyOcean V1 in a coordinated way in SUDOE area with *Intermediate Users* perspectives

Based on:

- Available Observing Systems







06:00 GMT 24/01/2009

Merci Fabrice!



euskalmet  
agencia vasca de meteorologia

Inicio

eu es

Estás en: Inicio

Buscar

Búsqueda avanzada

El tiempo

Mar

Información océano-meteorológica

Plataforma Radar Bona

Matxitxako

Donostia

Bilbao Matxitxako Bermeo Ondarroa Getaria Pasaia Higer Hondarribia

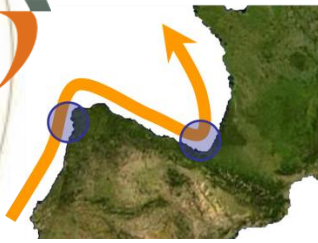
# Oceanic Observatory NW Iberian Peninsula RAIA

It also incorporate on the same platform other sources of data:

- HF Radar from Marina Mercante (Fisterra-Silleiro)
- HF Radar from UVigo (Ría de Vigo)
- New HF Radar from Intecmar.
- Tide Gauges from IH and Puertos del Estado
- Other buoys from Xunta de Galicia, IH and Puertos.
- River outflows (real time data and forecast)







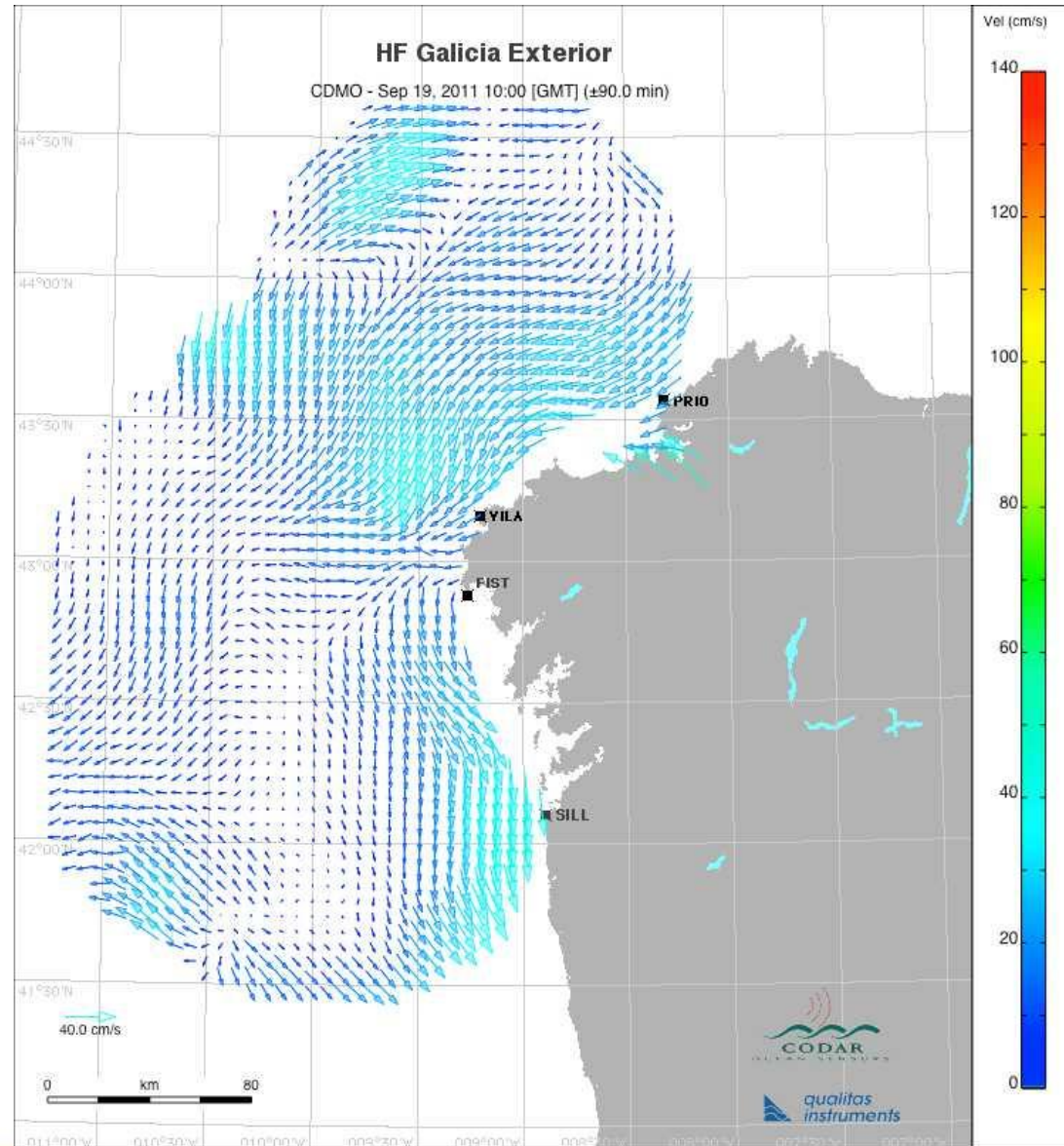
# Oceanic Observatory NW Iberian Peninsula RAIA



PROGRAMA  
COOPERACIÓN TRANSFRONTERIZA  
ESPAÑA - PORTUGAL  
COOPERAÇÃO TRANSFRONTEIRIÇA  
2007 - 2013



EPIGRAM Ré May 2012





## Coastal Intermediate users

To organize the validation of MyOcean V1 in a coordinated way in SUDOE area with *Intermediate Users* perspectives

Based on:

- Available Observing Systems
- The main known processes along the IBI *shelf/slope*
- An integrated point of view (instead of studying the processes locally)



# Process- oriented validation

Answer state-of-the-art questions from an integrated point of view:

- ✓ Spatial and temporal variability of shelf/slope surface currents and wind-current interactions (scientific and operational interests)
- ✓ Contribution of the IPC to the surface transport, spatial and temporal variability
- ✓ Contribution of processes as tides and vertical motions and other (local forcings/processes) to the shelf/slope circulation

## Main Processes:

Wind induced current

Slope current

Tides, internal waves, upwelling

Other (local) processes

River plumes dynamics, ...



# LORAIA

**G.T.1: Gestion et coordination  
coordinación**

**G.T.6: Evaluation et Suivi**

**G.T.7: Publicité, information et capitalisation du projet**

**G.T.2: Établissement d'un réseau coordonné de  
systèmes d'Océanographie Opérationnelle  
côtière**

**G.T.3: Développement  
d'un réseau côtier de  
radars HF  
(mesurant les courants  
de surface)**

**G.T.4: Connexion  
coordonnée au produit  
européen Myocean  
(modèle hydrodynamique à  
l'échelle de l'arc Atlantique)**

**G.T.5: Outils de l'Océanographie Opérationnelle au service  
des usagers des secteurs productifs et environnementaux à  
haute valeur ajoutée dans le SUDOE (pour la qualité des eaux  
de baignade, déchets flottants, marée énergie marine,...)**