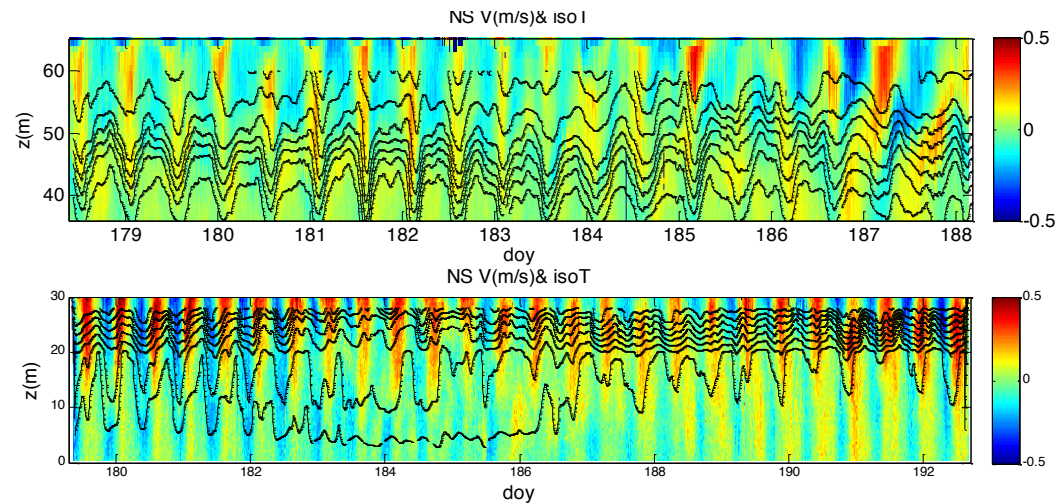
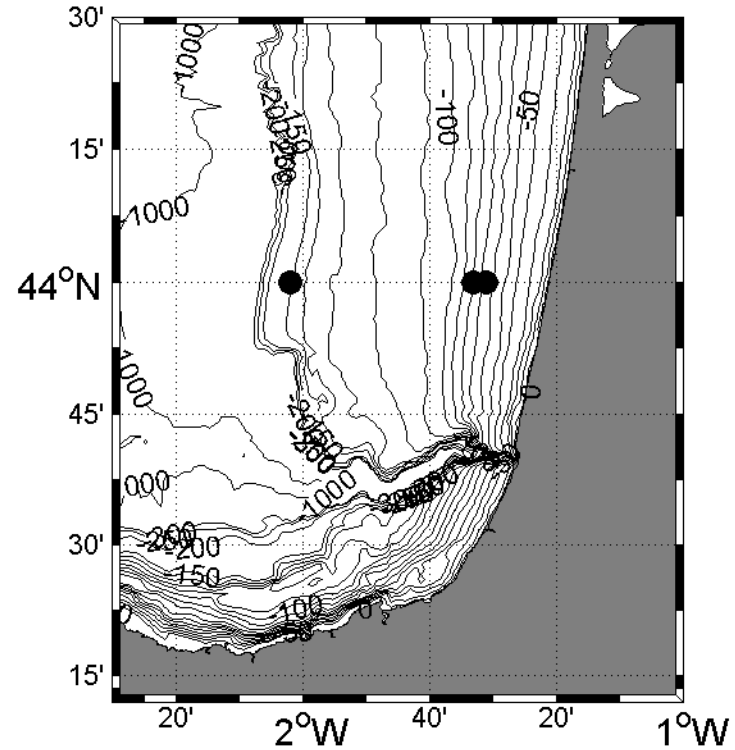
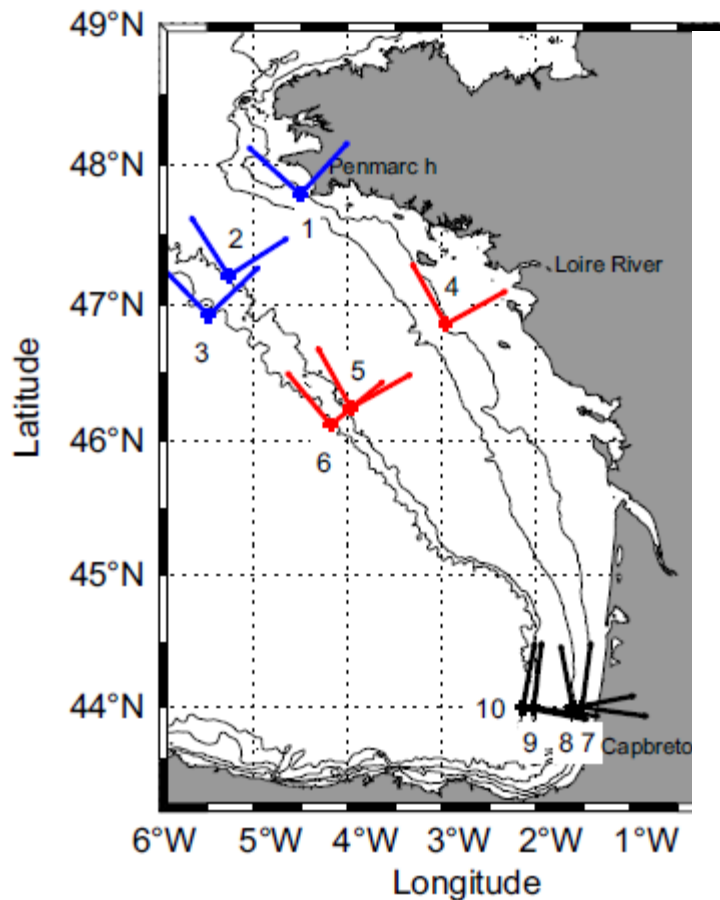


Le Projet Géronimo

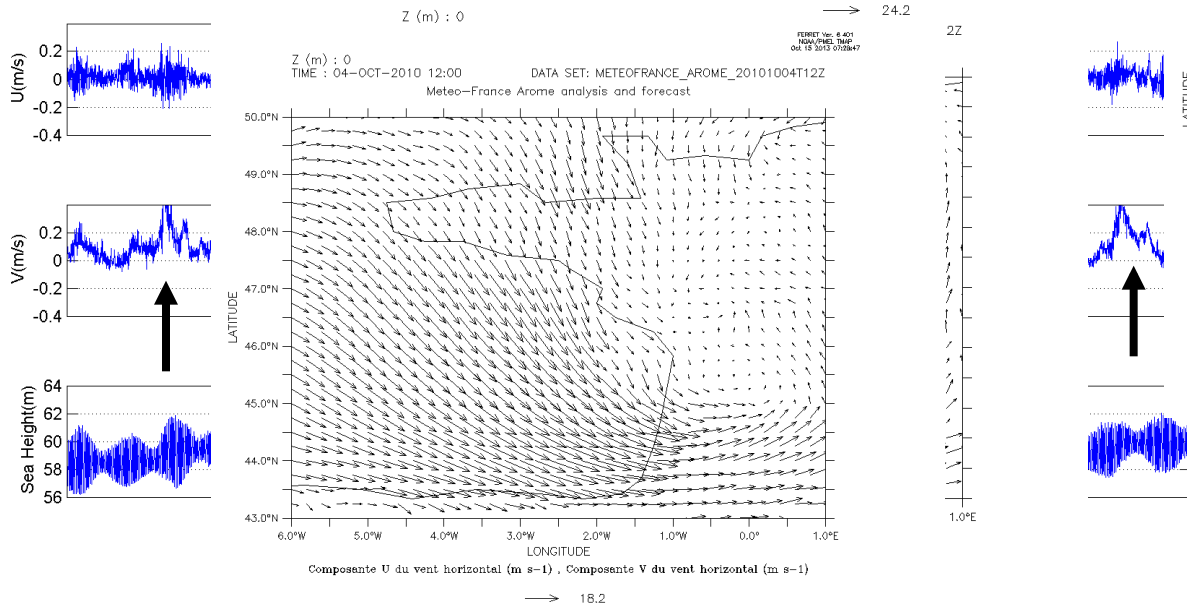
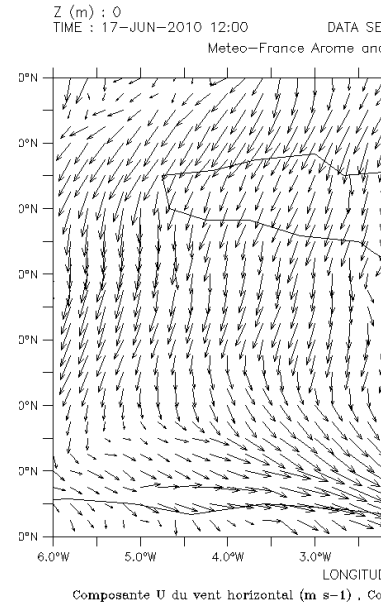
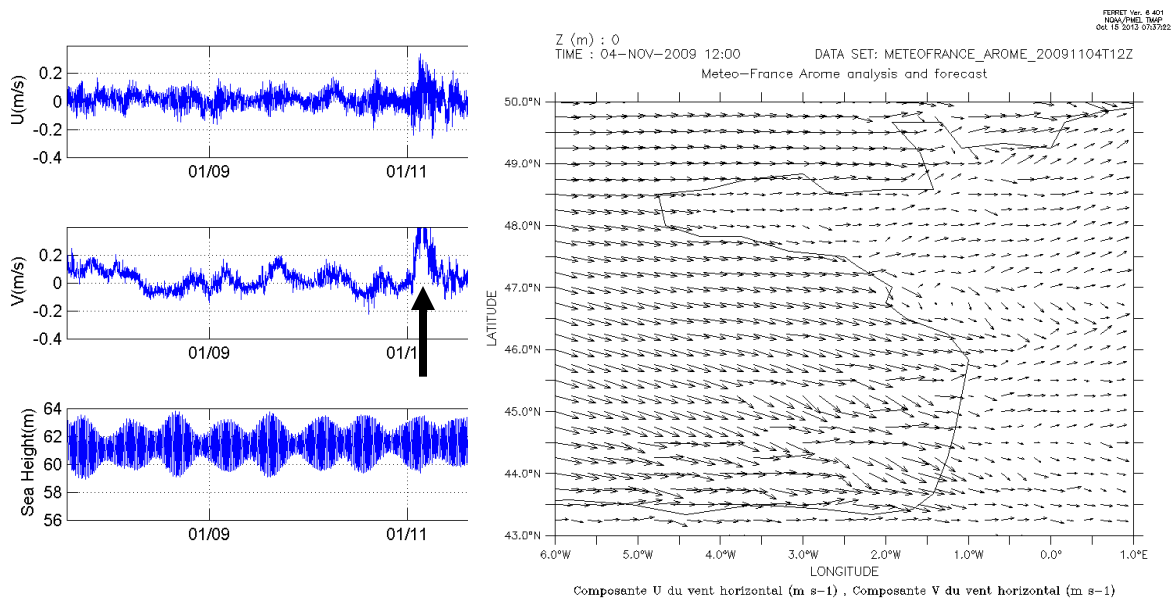
- Titre du projet : GERONIMO (Génération et Représentation des Ondes Internes dans les Modèles Opérationnels)
- Type de projet : Projet d'Action Ciblée (PAC) LEFE-GMMC
- Participants : Locean : P. Bouruet Aubertot, Y Cuypers, LA: F. Auclair, SHOM : A. Pichon, Mercator.
- 4 WPs :
 - Définitions de métriques pour caractériser les ondes Internes dans le domaine côtier
 - Analyse des observations d'ondes internes dans le domaine côtier (campagne Per2tong par ex., ASPEX,...)
 - Analyse de leur représentations dans les modèles Opérationnels (Hycom, Mars, Nemo ?)
 - Apport d'une modélisation NH



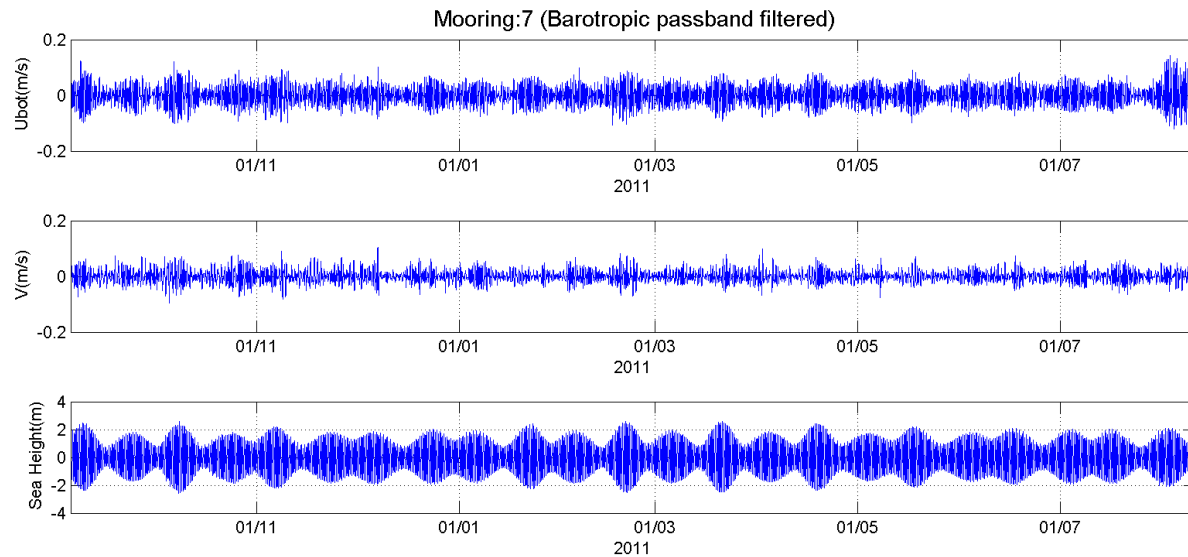
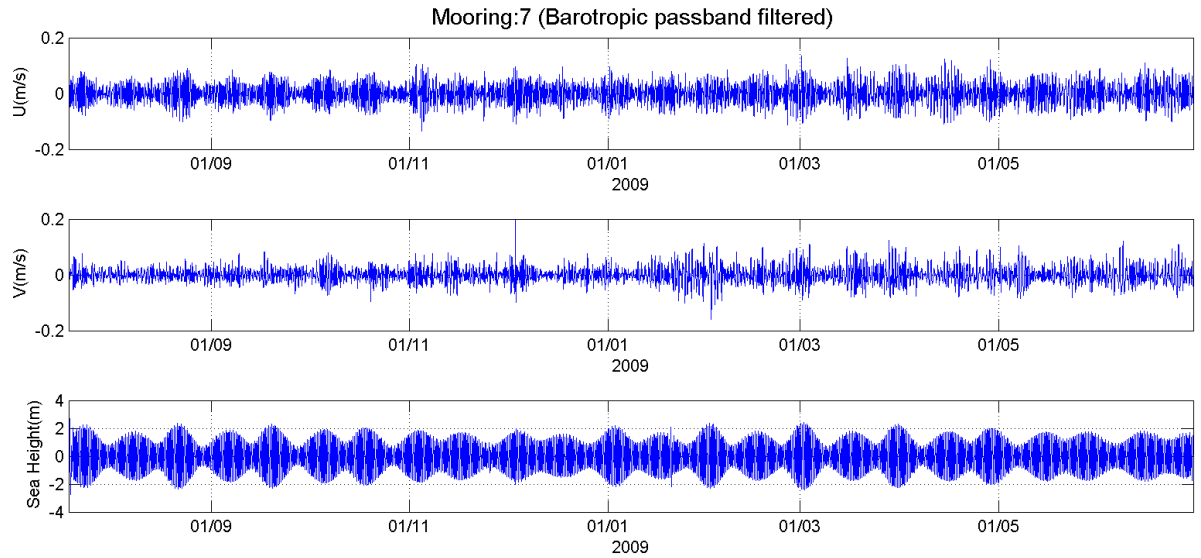
Quelques observations issues des mouillages ASPEX



Courants bruts moyens + niveaux



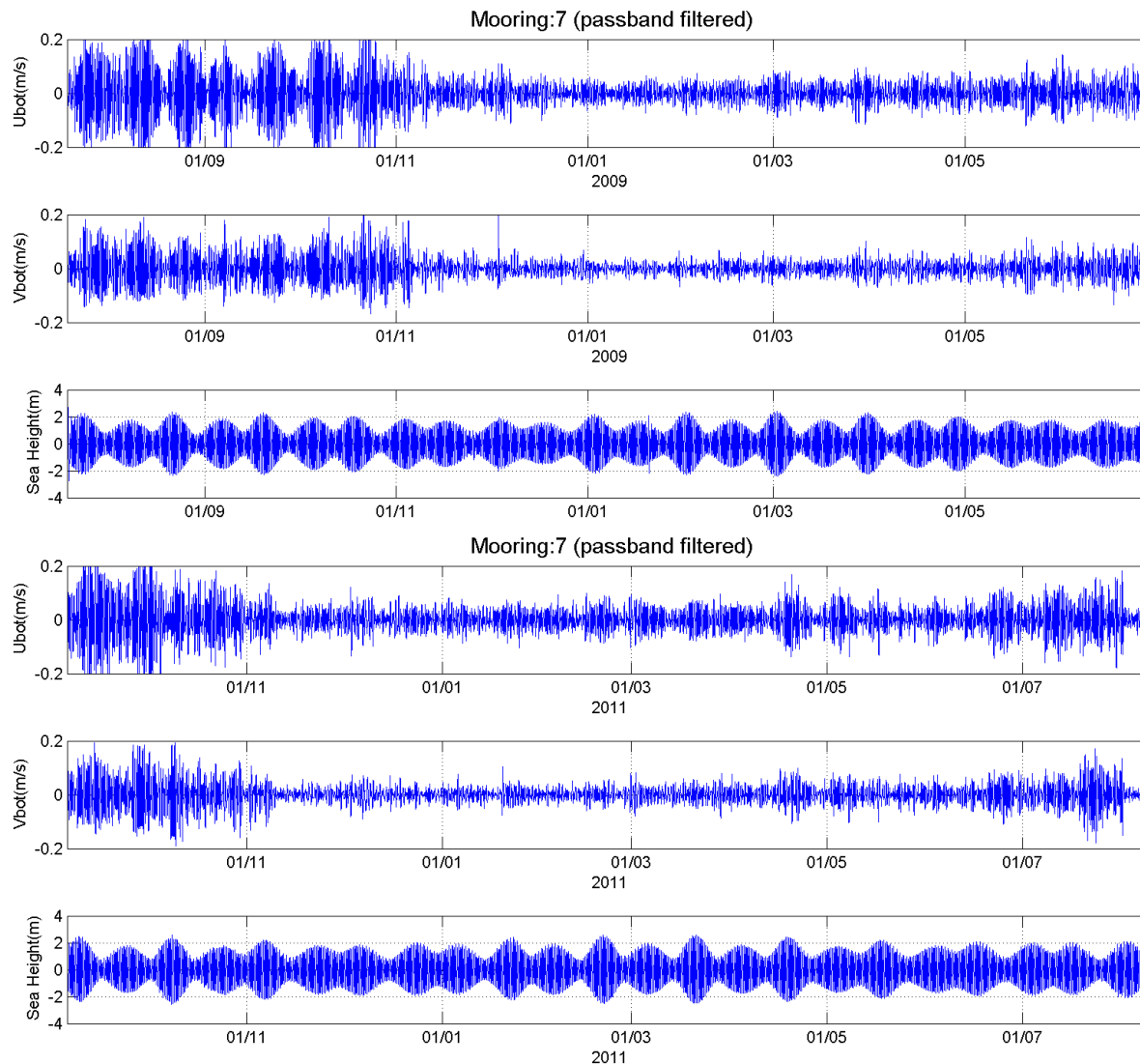
Courants moyens filtrés (6-30h)



-Composante U dominante

-Cycle VE-ME

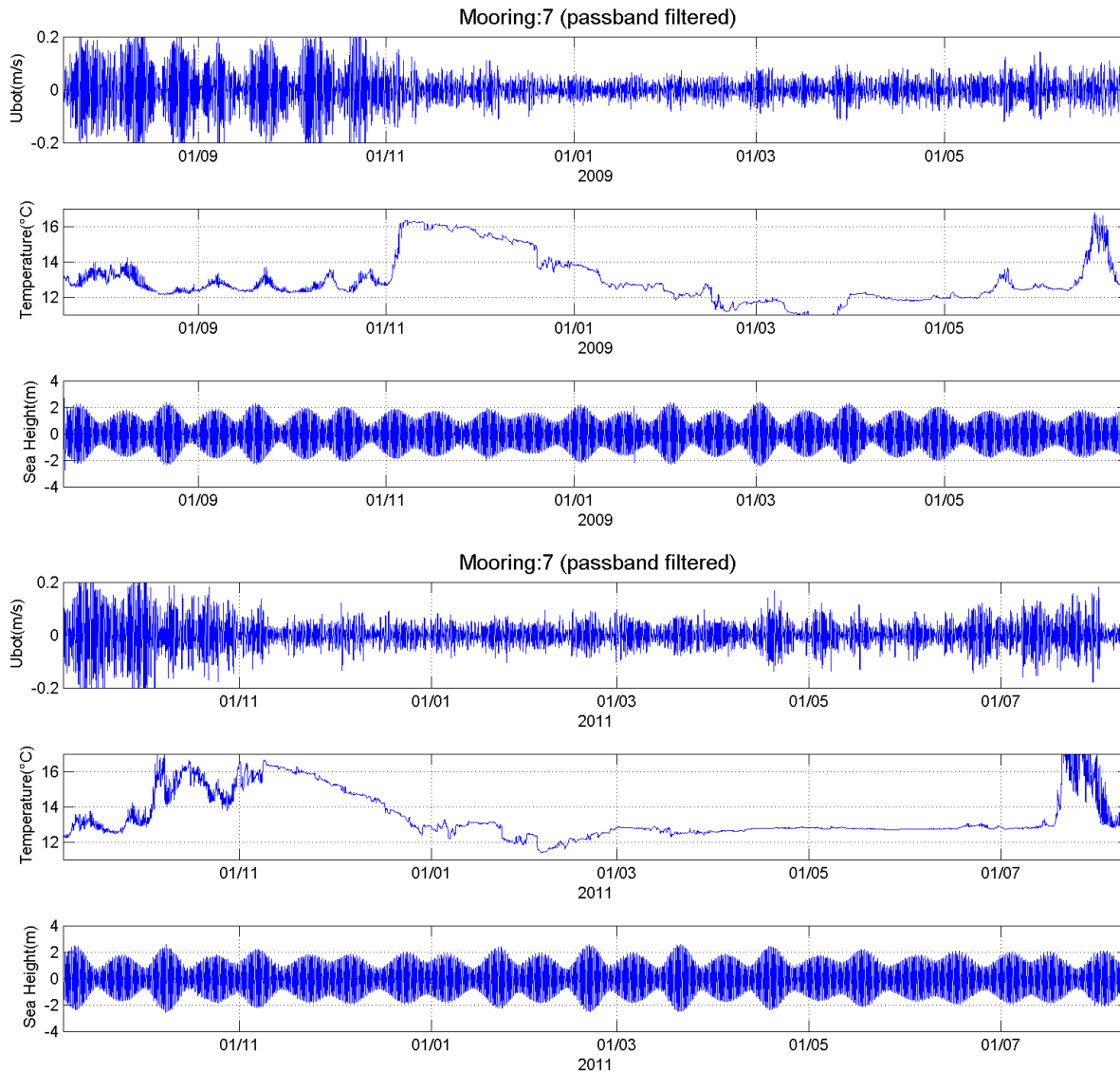
Courants de fond filtrés



-« Saisonnalité » des courants de fond...

-Courants de marée 3x moins forts entre nov-mai

Avec les températures....



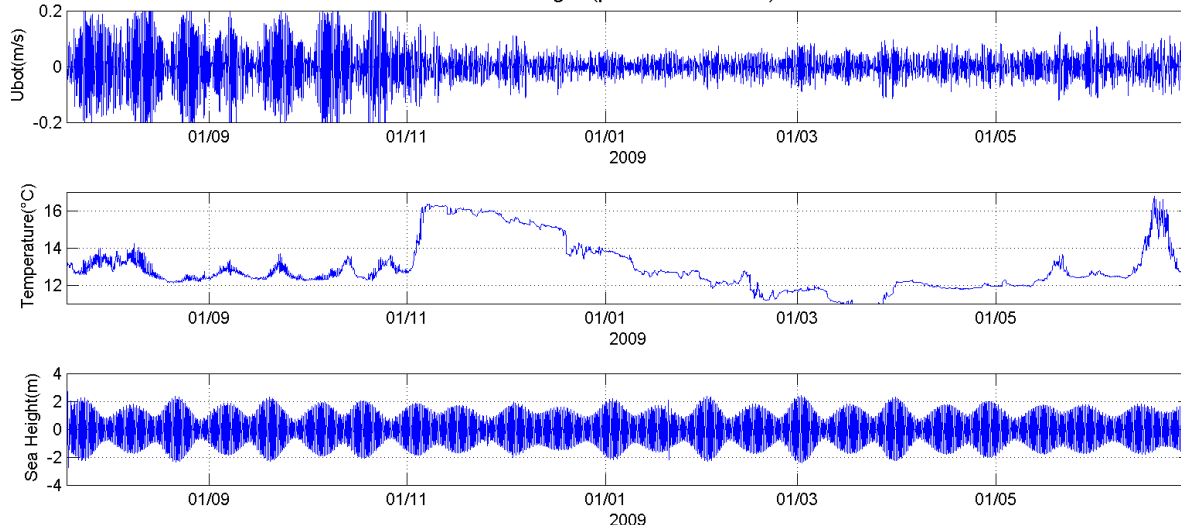
-Hausse de la T° de fond
=Baisse de la stratification

-La chute des courants de marée débute quand la T° de fond augmente

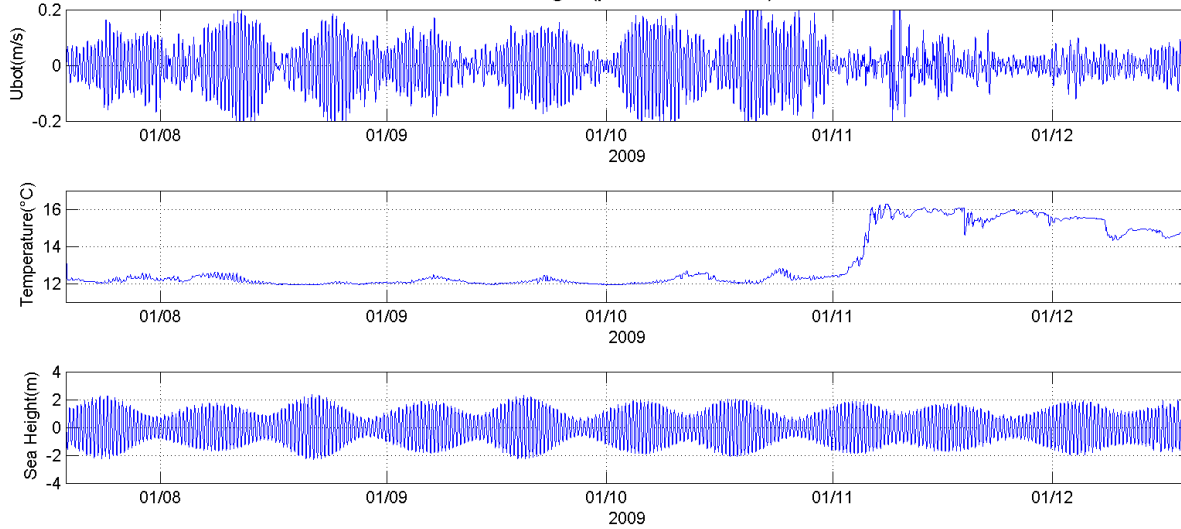
- Chute des courants en Aout 2011

Comparaison 7-8 (2009)

Mooring:7 (passband filtered)

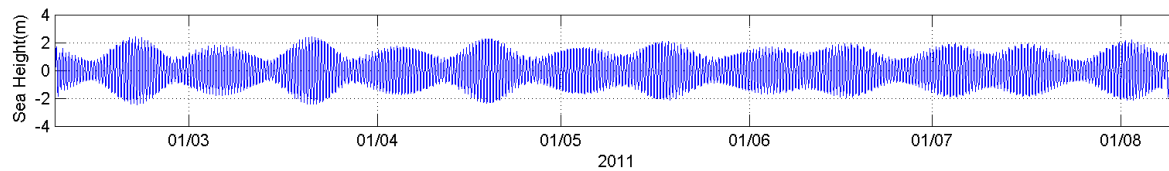
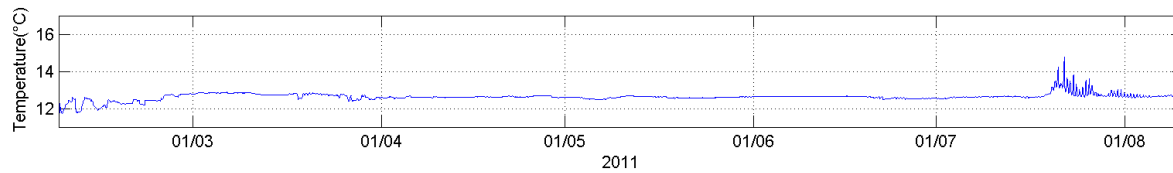
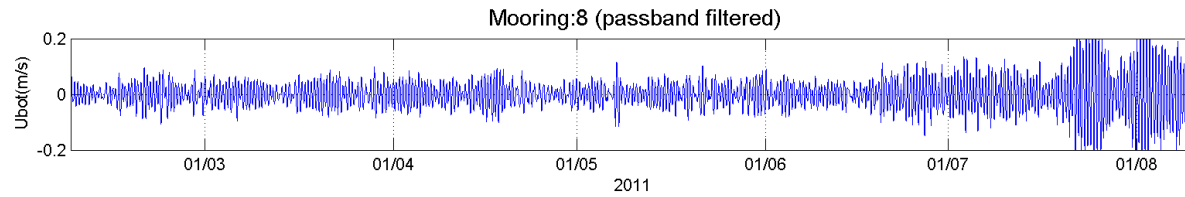
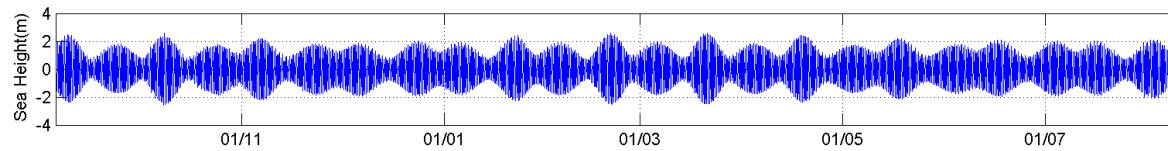
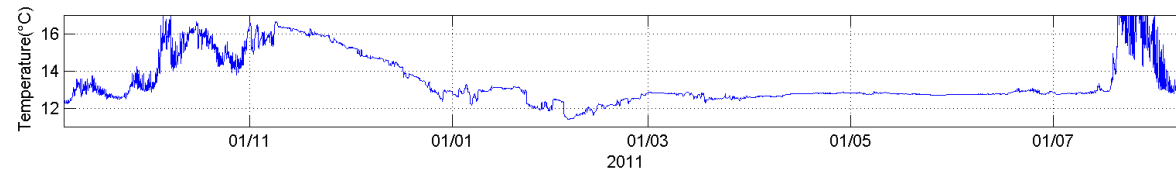
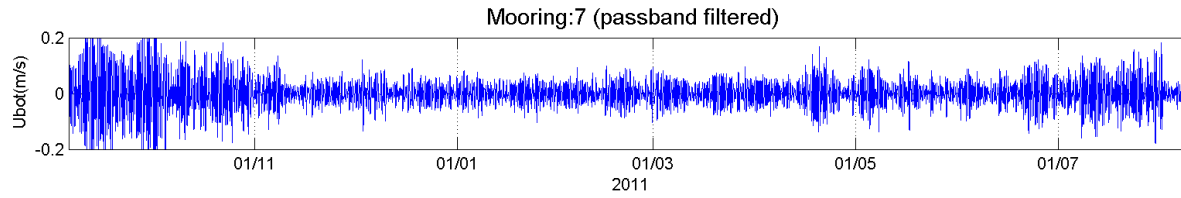


Mooring:8 (passband filtered)

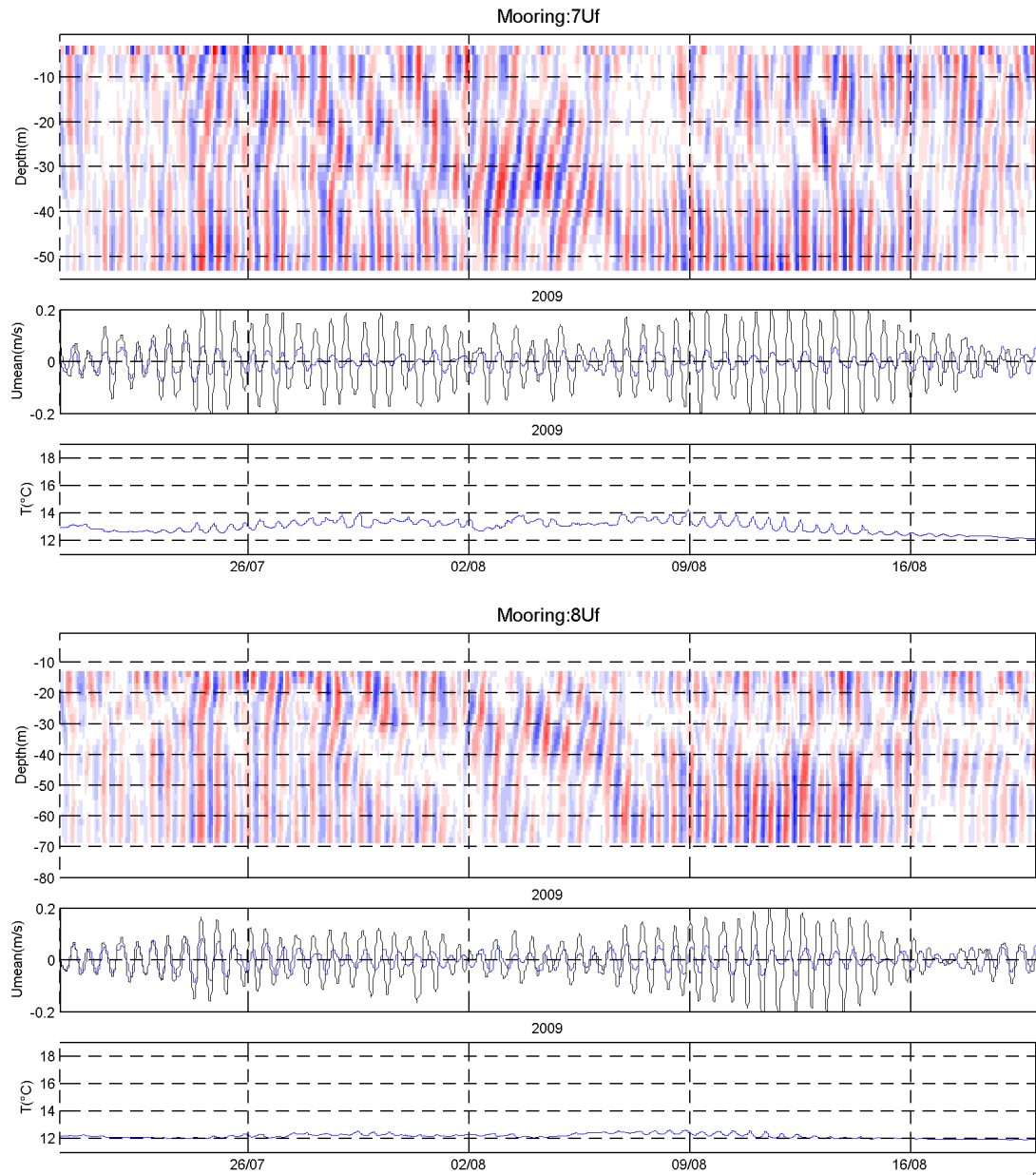


Comportements assez similaires (chute des courants après Nov et la fin de la stratification)

Comparaison 7-8 (2011)

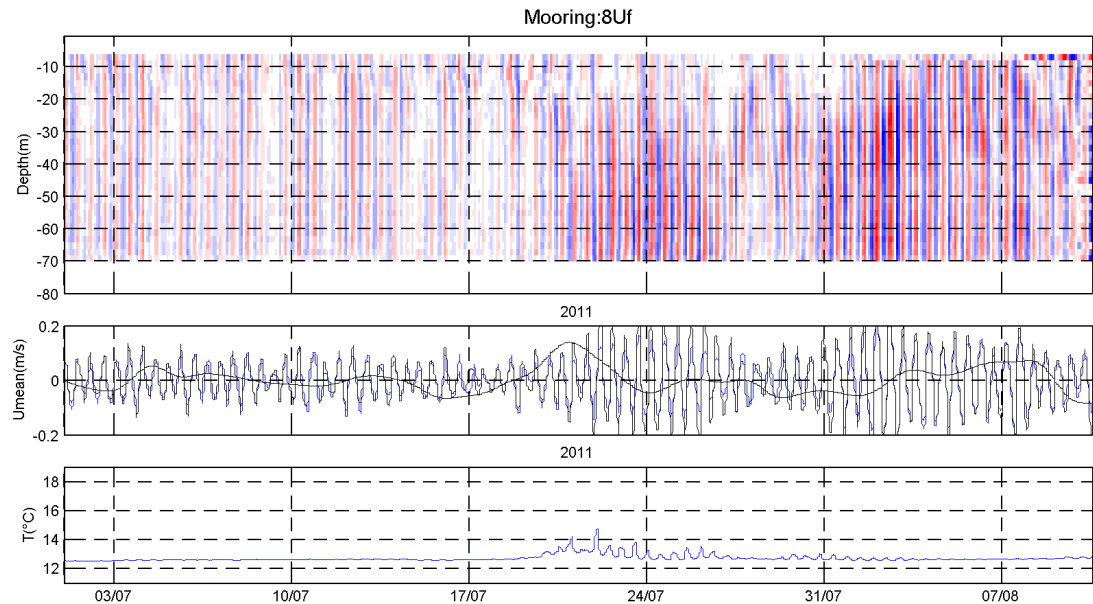
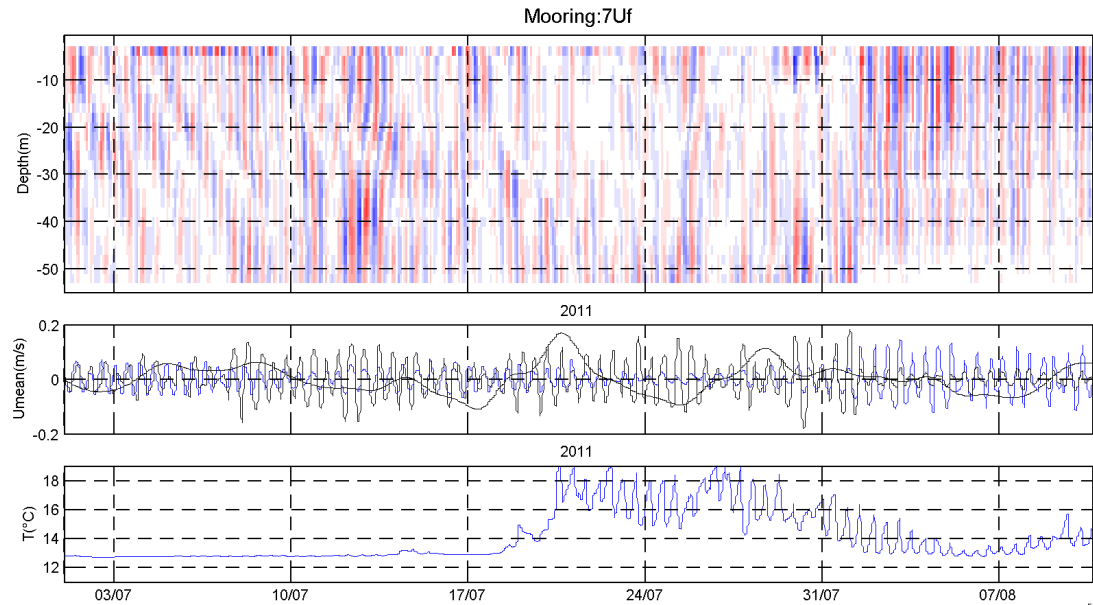
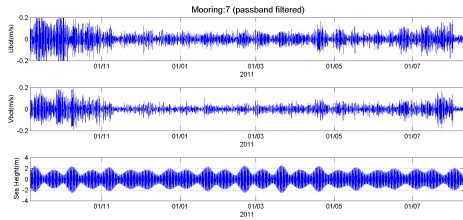


Profils verticaux de courants



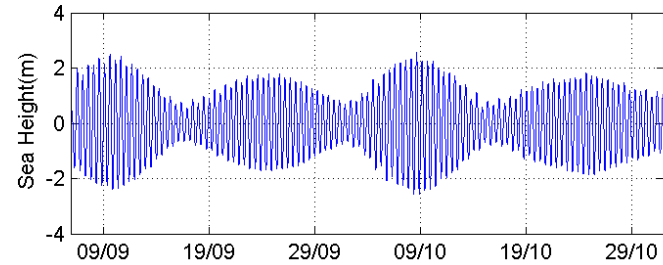
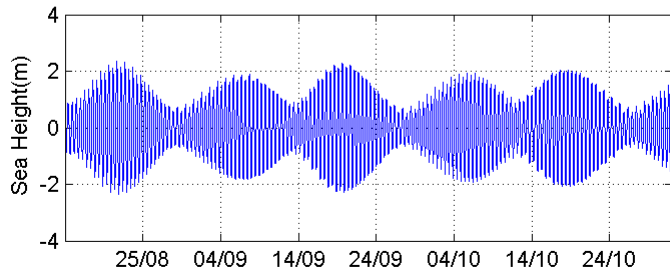
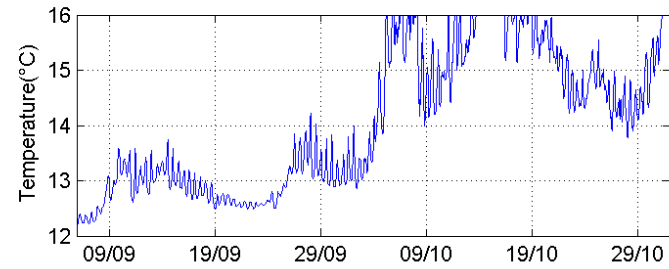
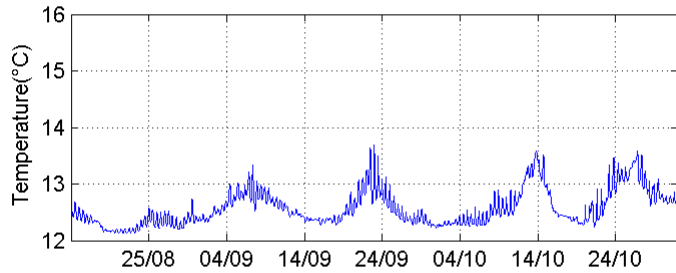
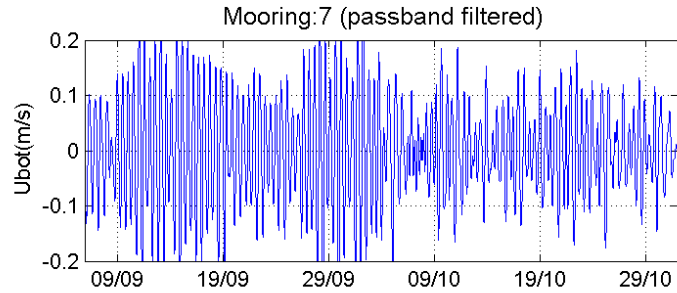
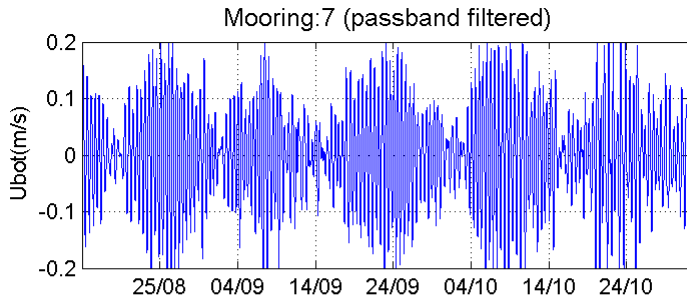
- **Top** : crossshore current. **Middle** : Depth averaged currents : blue, bottom currents : black. **Bottom** : temperature

Evénement de début Aout 2011



- Middle : 31/07 Bottom currents vanish. Depth averaged currents increase.

Quelques zooms en été



-2009. Cycles VE_ME décalés/
niveaux. Hausse de la T° (mélange ?)

Courants fond bruts

