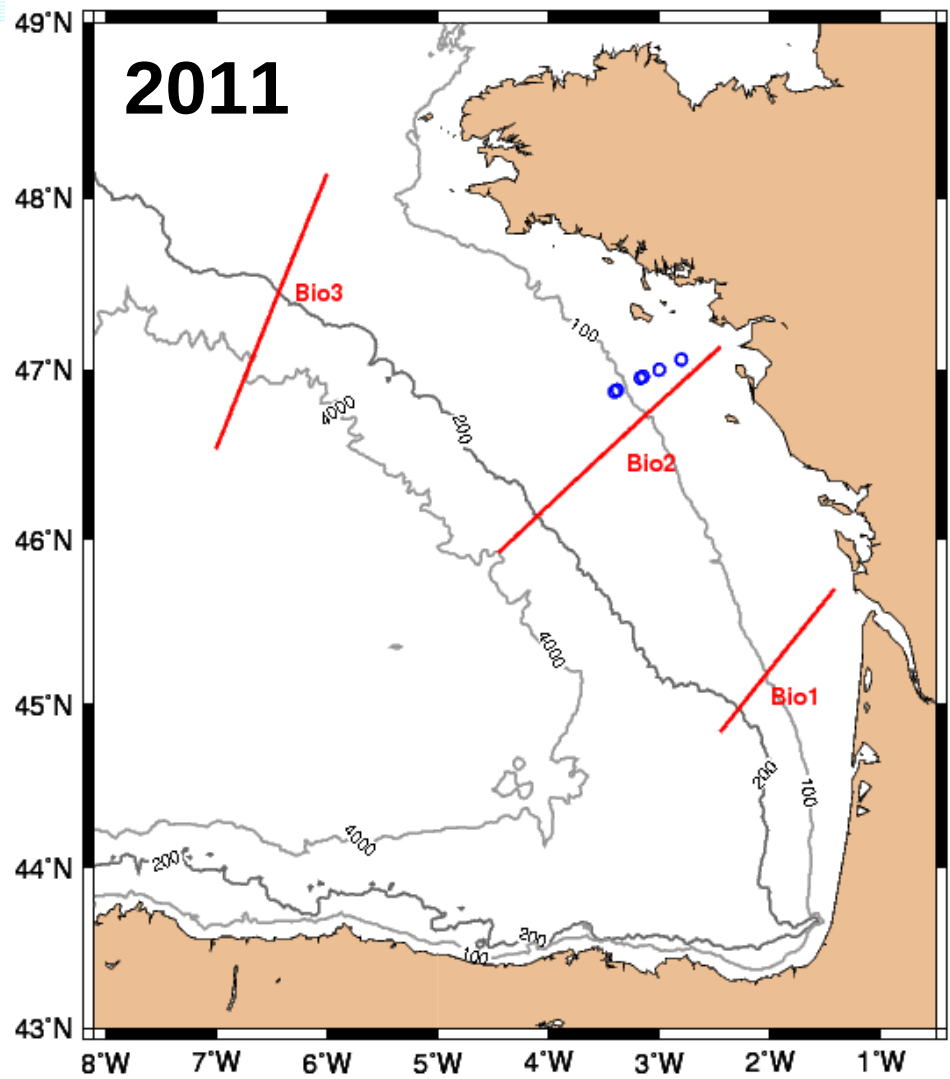
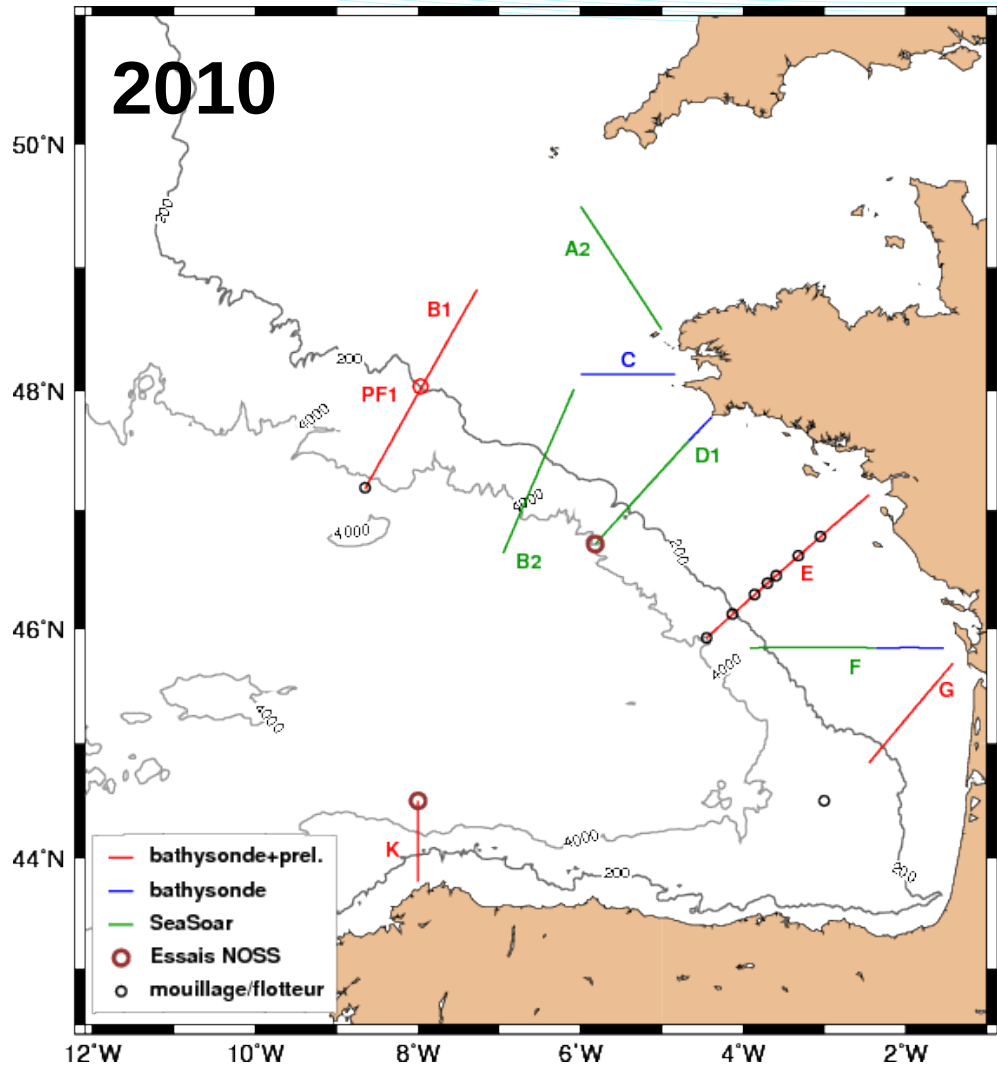


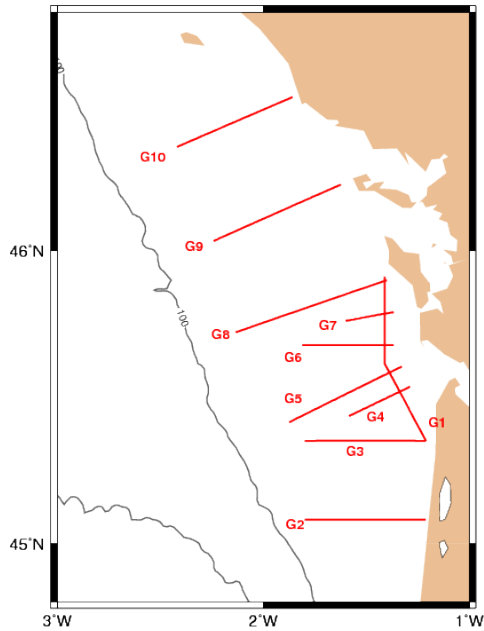
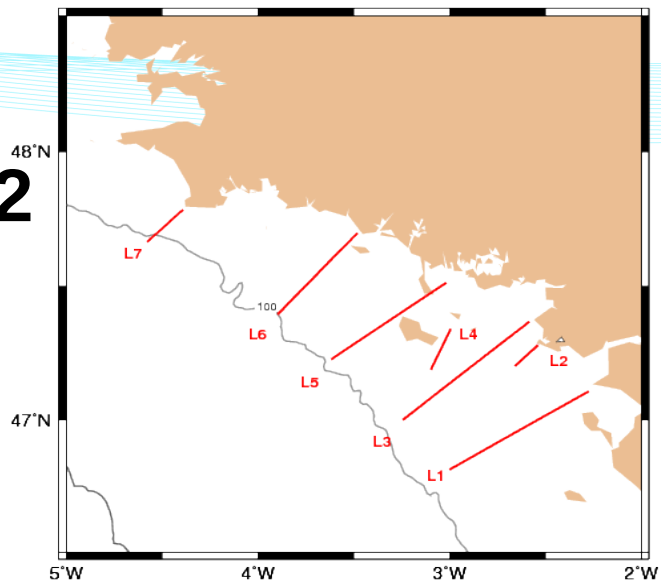


PROTEVS 2013 survey

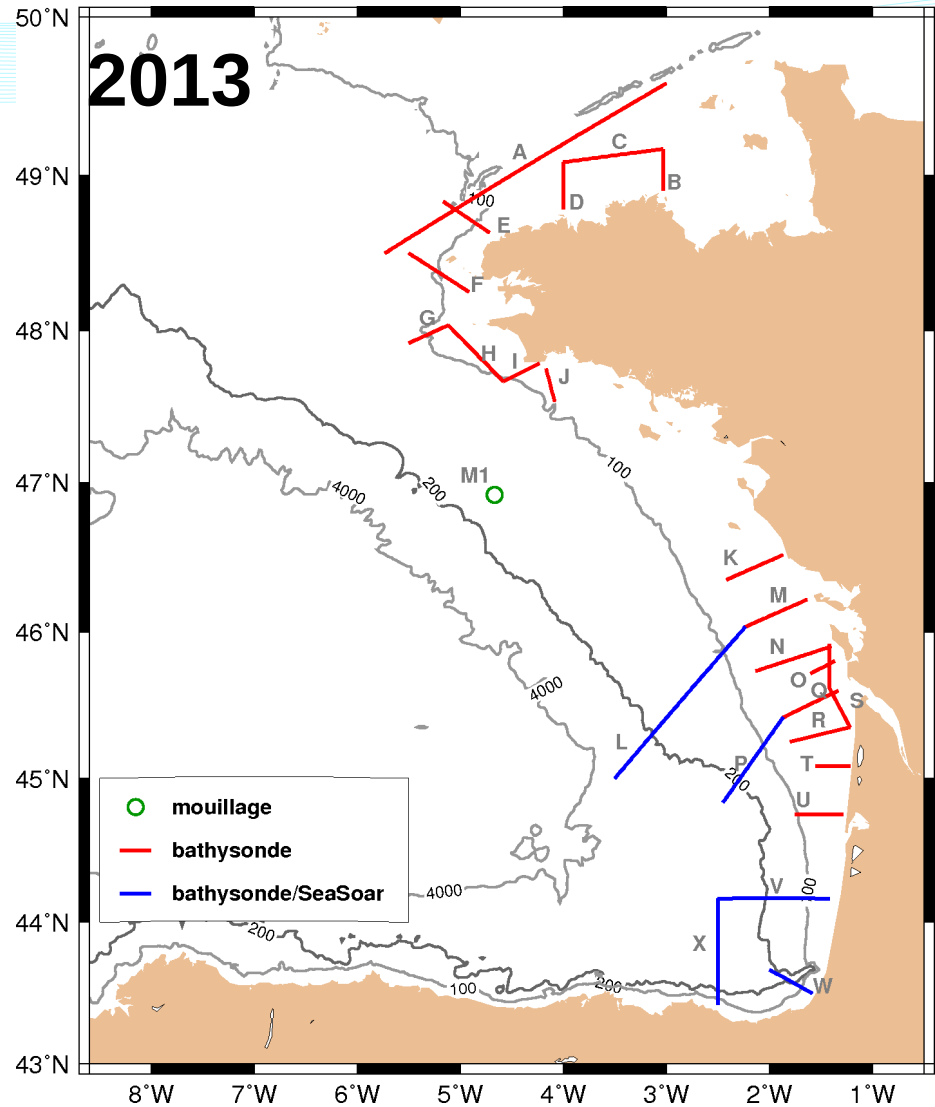




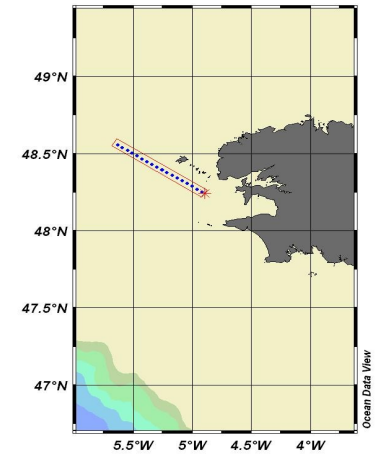
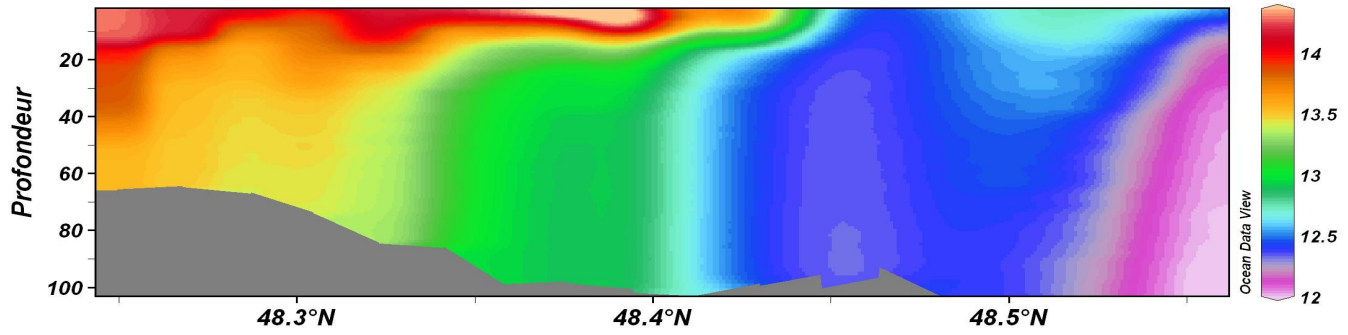
2012



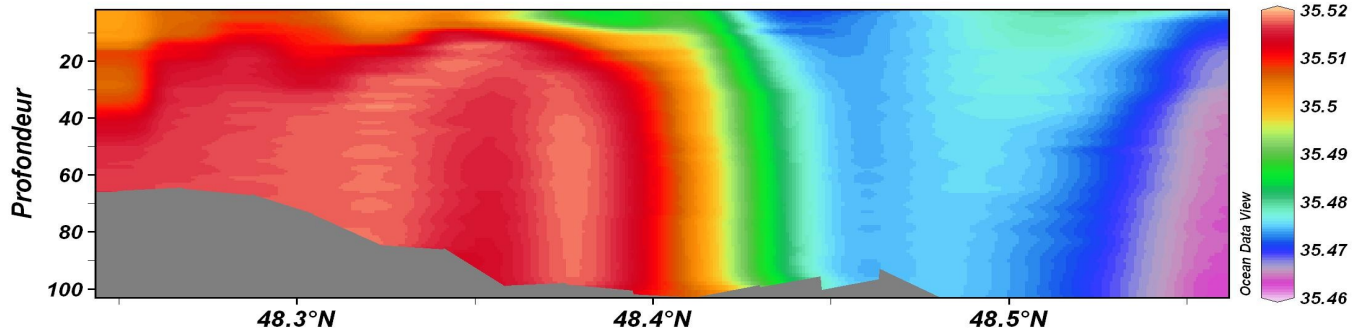
2013



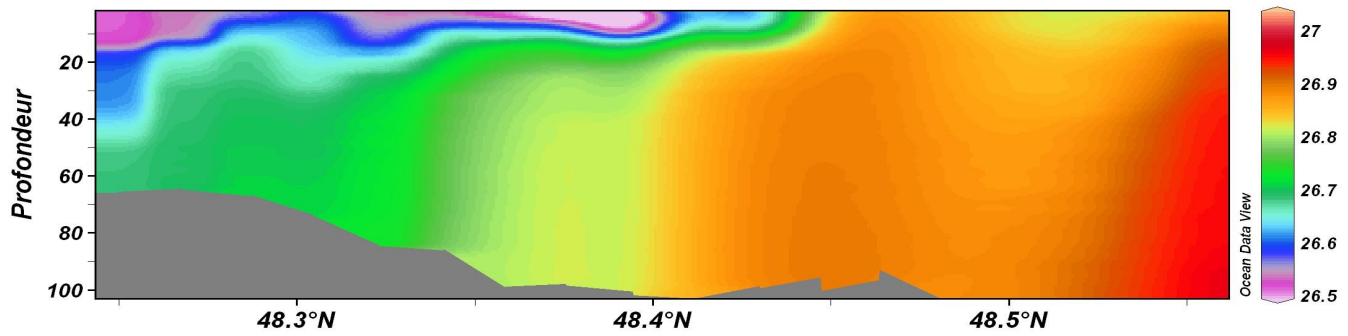
Température



Salinité



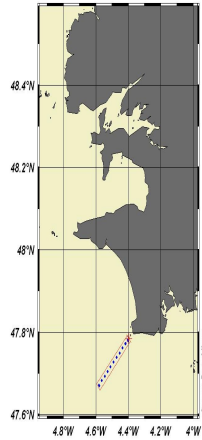
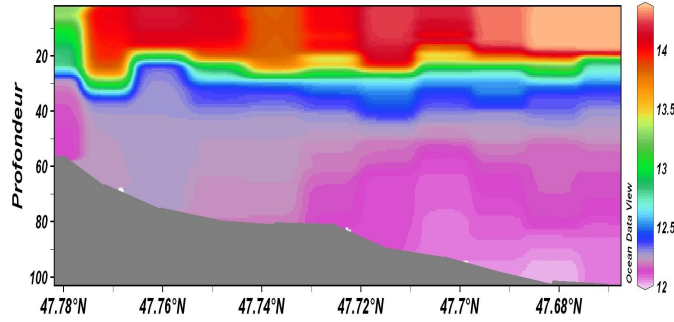
Densité



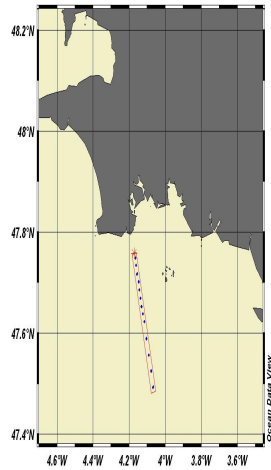
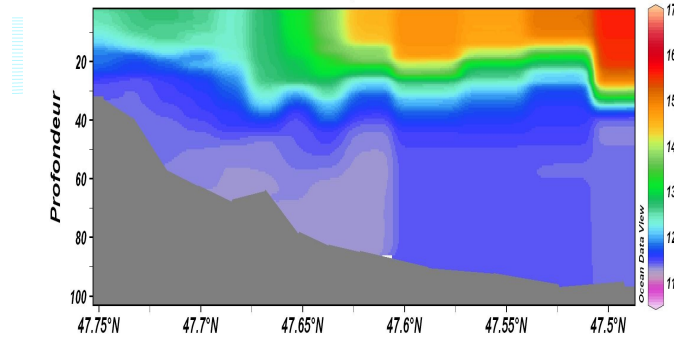
RADIALE F PHYS



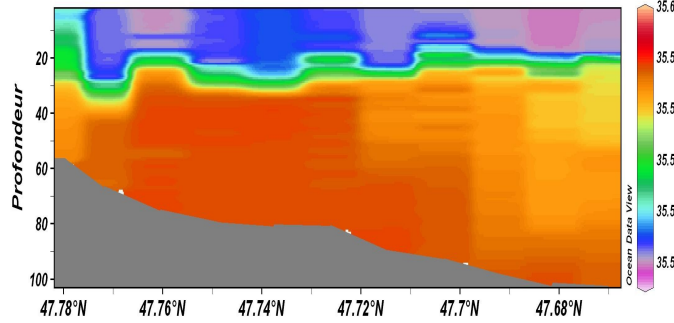
Température



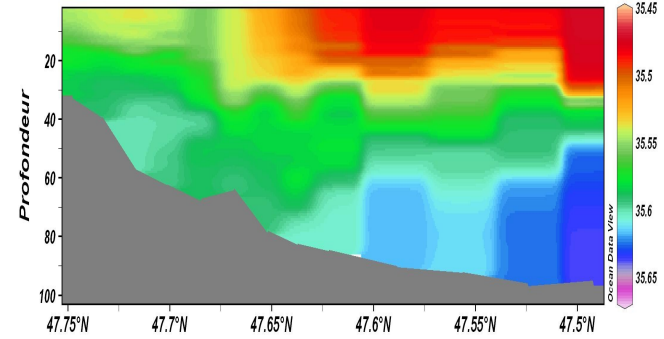
Température



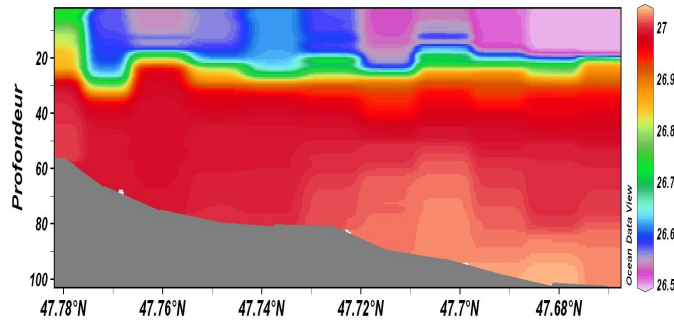
Salinité



Salinité

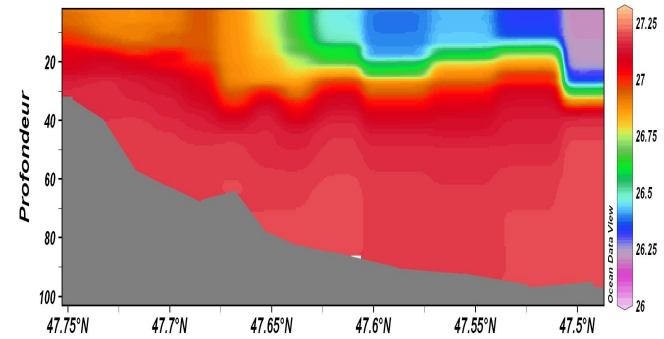


Densité



RADIALE I PHYS

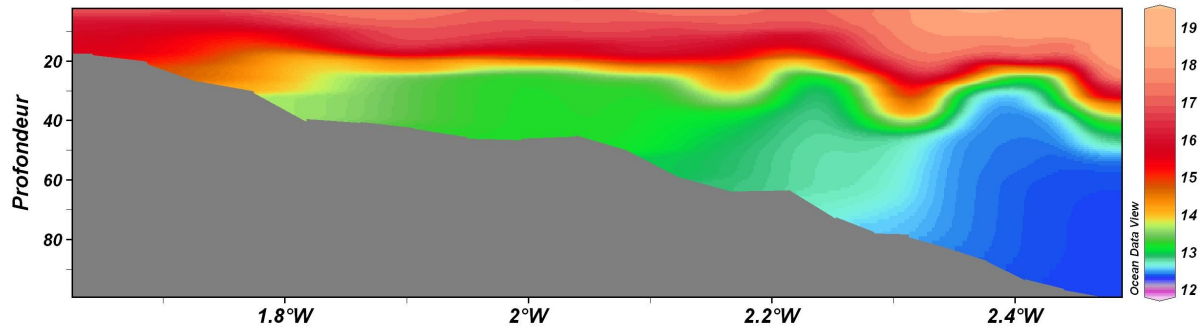
Densité



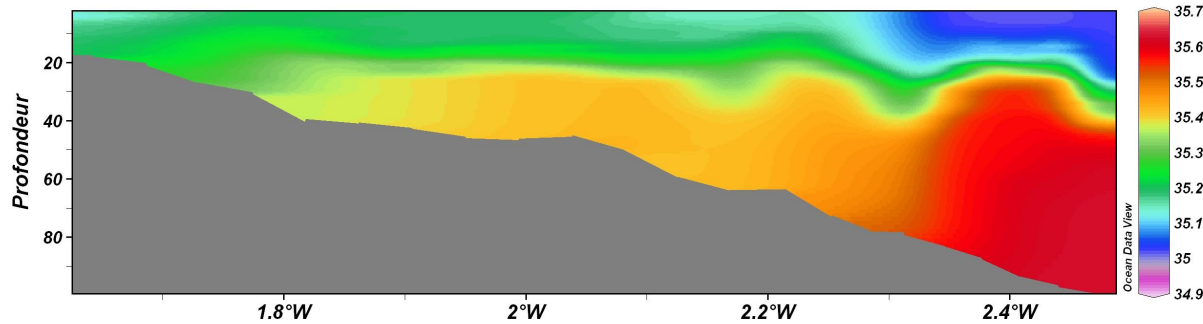
RADIALE J PHYS



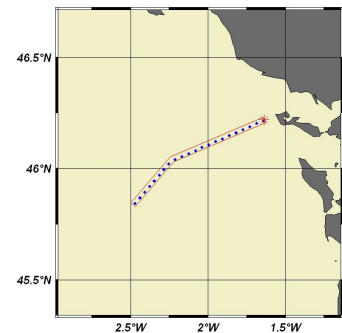
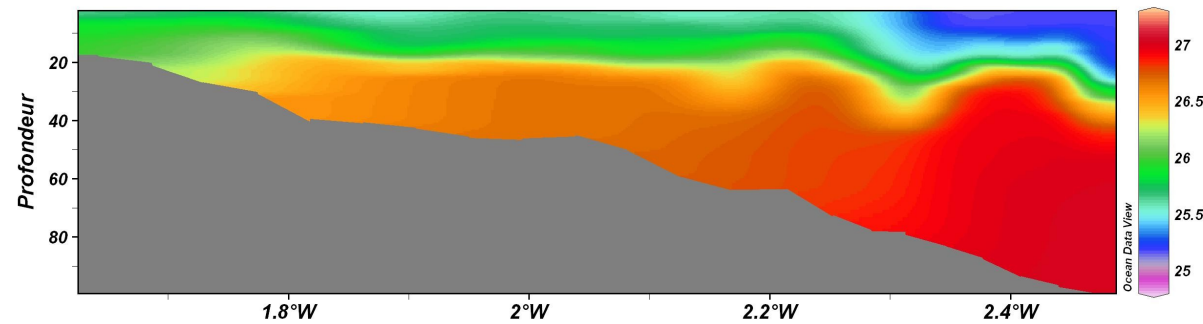
Température



Salinité

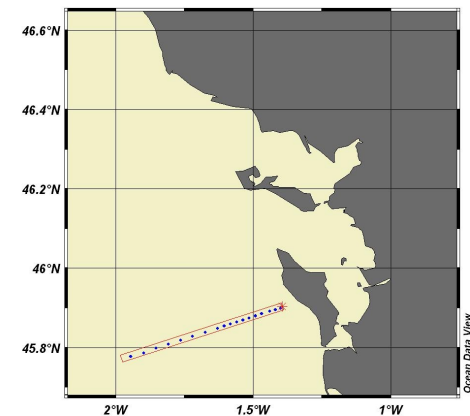
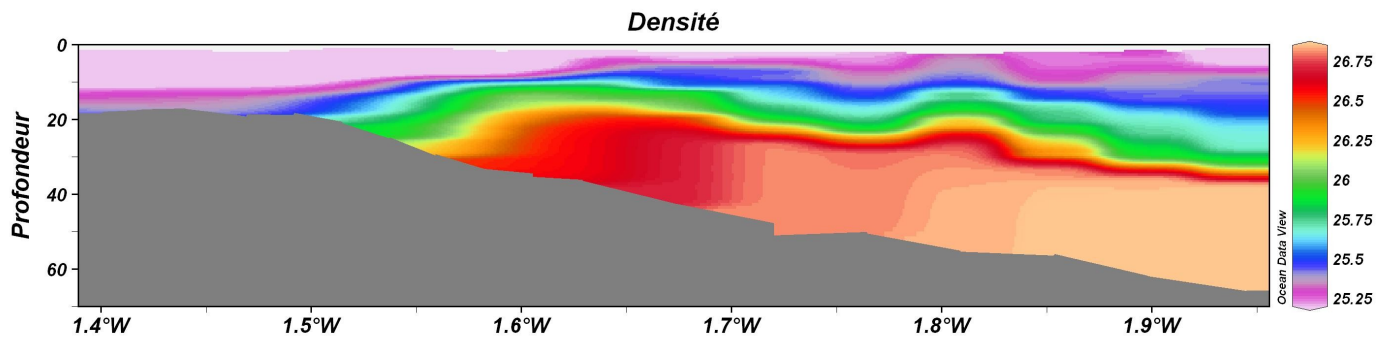
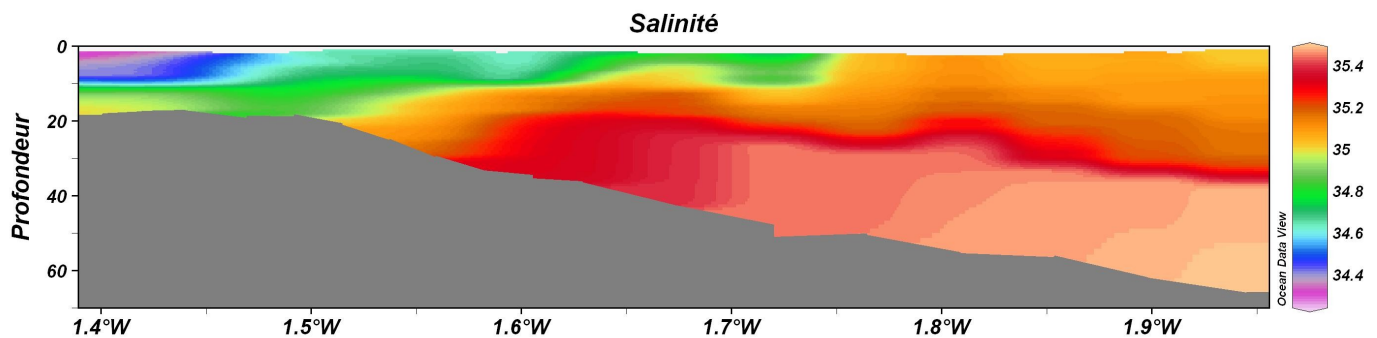
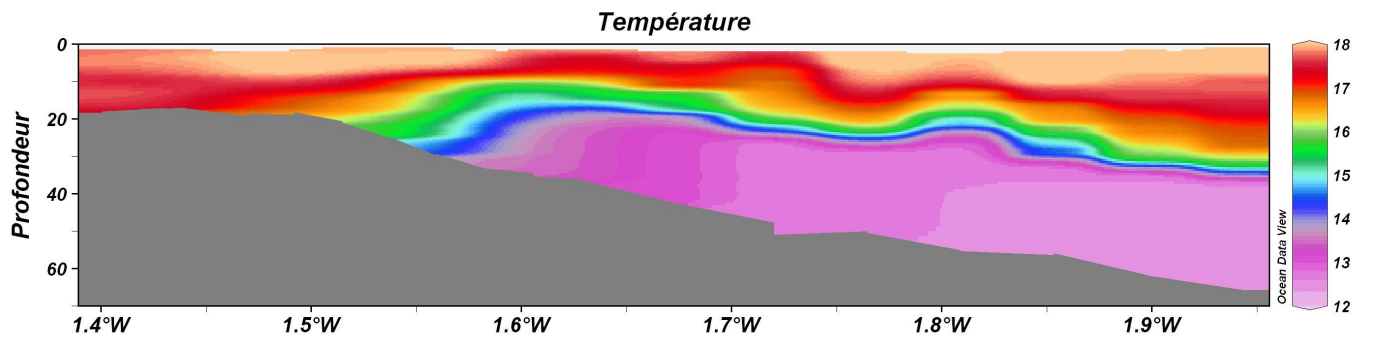


Densité



RADIALE M PHYS

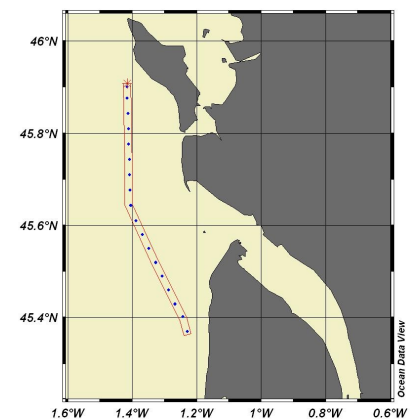
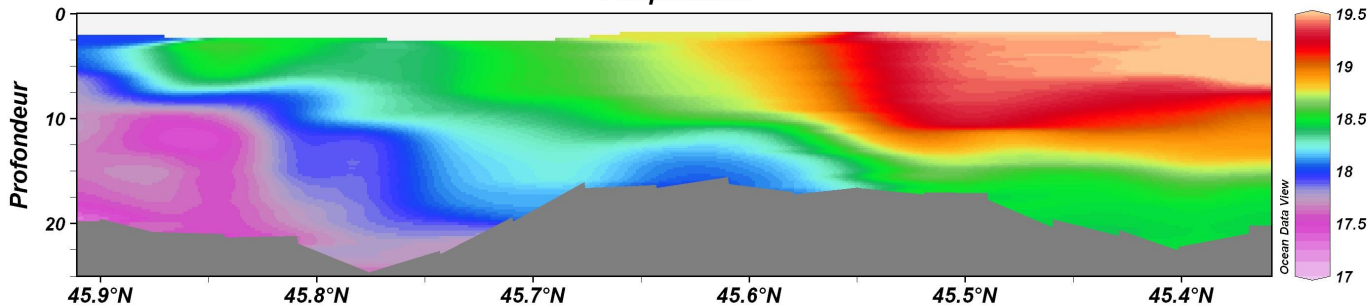




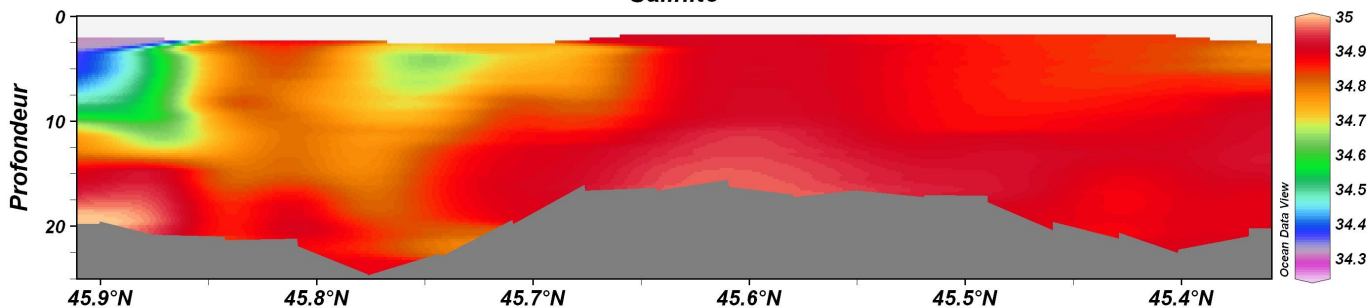
RADIALE N PHYS



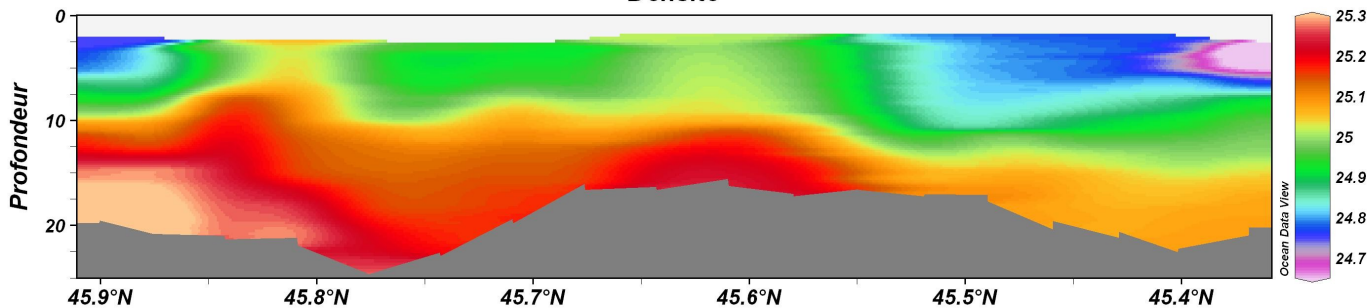
Température



Salinité

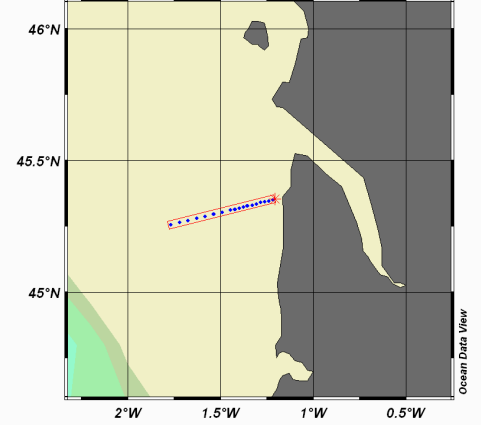
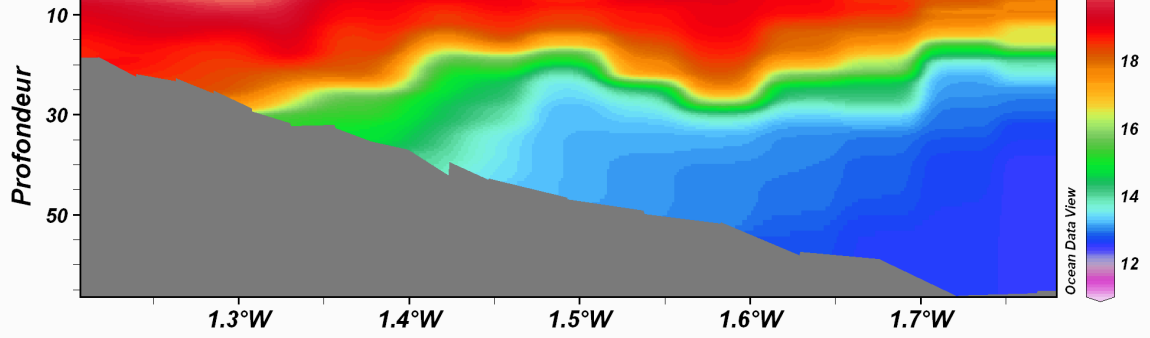


Densité

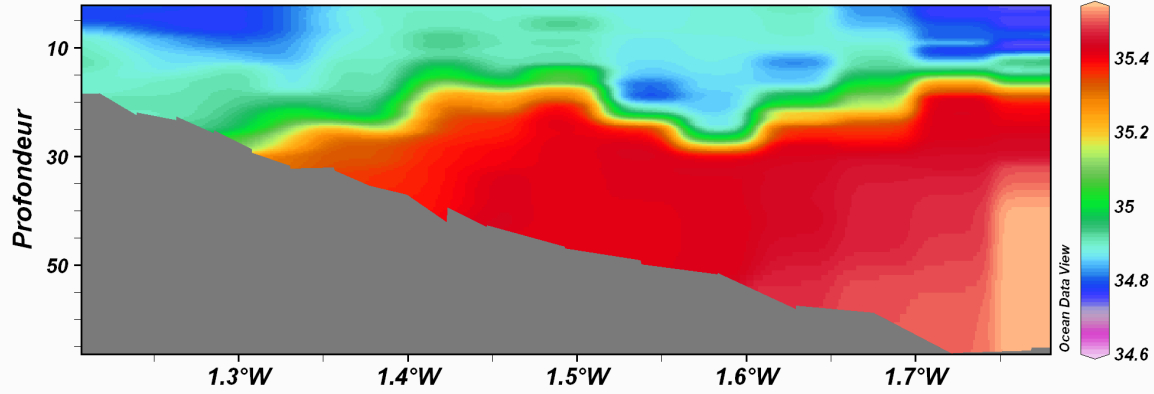


RADIALE S PHYS

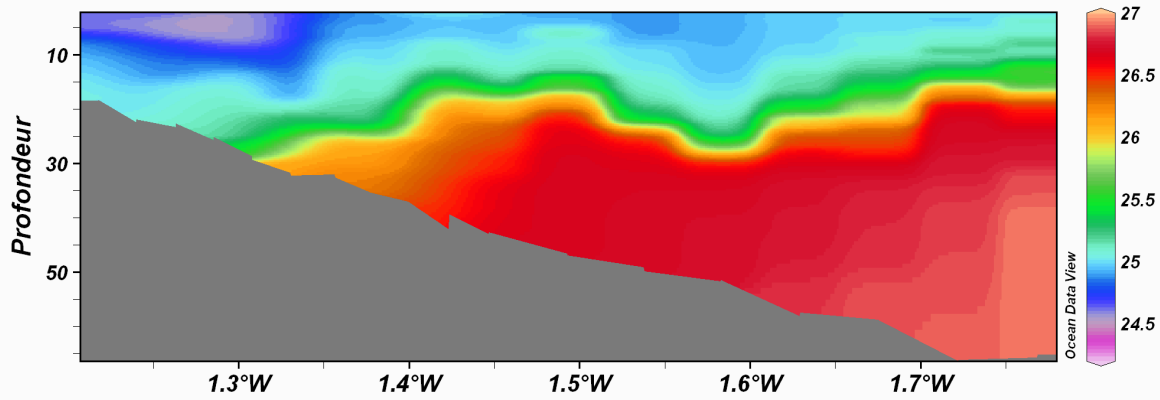




Salinité

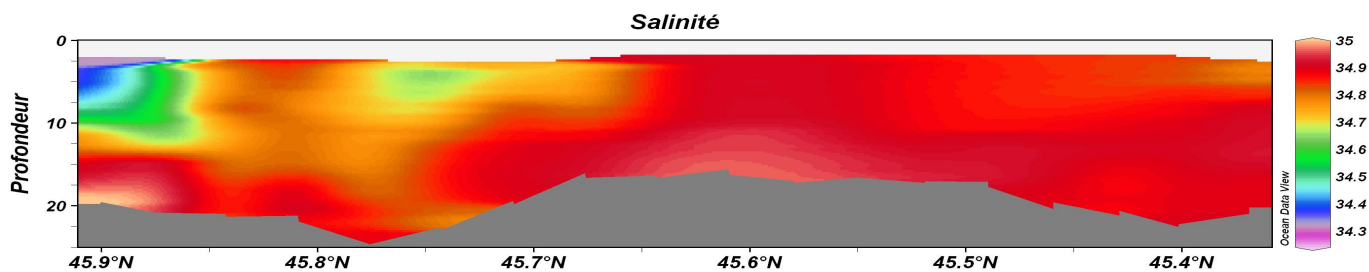
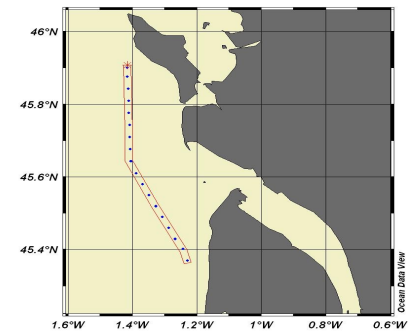
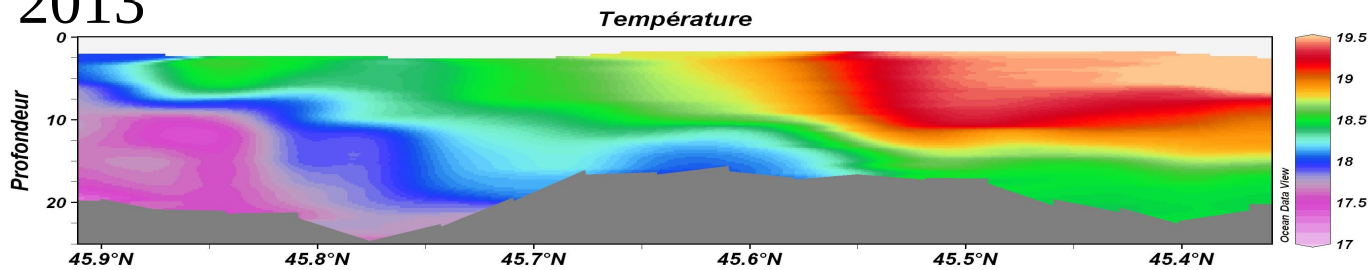


Densité

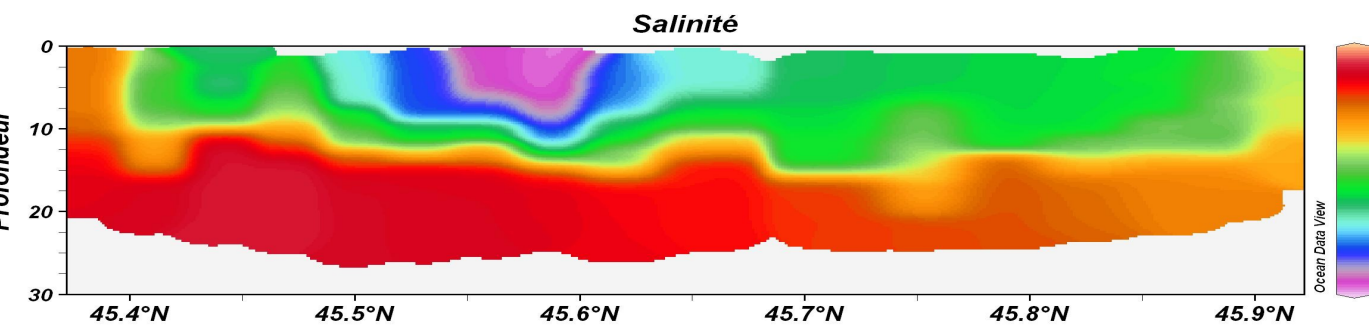
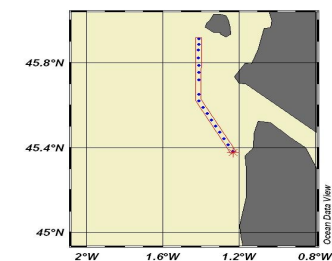
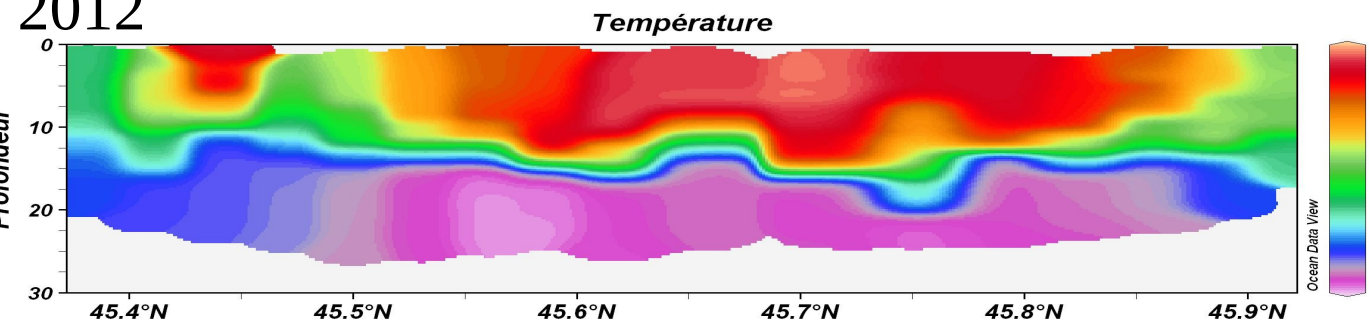


RADIALE R PHYS

2013



2012



Upcoming use

Development and validation of a biogeochemical model of the bay of Biscay

Improvement of the circulation model
Estuarine dynamics
Bottom friction and mixing

